

Standard Machine Elements

Quick Catalogue



DESIGNED
FOR ENGINEERING



DESIGNED
FOR ENGINEERING

TWO COMPANIES ONE WORLD OF STANDARD PARTS



ELESA+GANTER is a worldwide sales joint-venture set-up to offer the widest product range of standard machine elements for the mechanical industry. Highly reliable products ensuring perfect functionality with a unique design represents the ELESA+GANTER distinctive quality code.



ABOUT ELESA+GANTER

ELESA+GANTER is the worldwide sales joint-venture between Elesa S.p.A. (Italy) and Otto Ganter GmbH & Co. KG (Germany). In 1995, after more than 20 years of successful cooperation, the two companies started setting up a combined product range and a common sales network under the trademark ELESA+GANTER.

The combination of ELESA know-how in design and manufacturing of engineering plastics with GANTER expertise and precision in metal parts makes ELESA+GANTER a unique range.

Customers soon started appreciating it from all over the world. Subsidiaries were established initially in Austria, Spain, Poland and then in China, Czech Republic, India, Turkey and Netherlands.

ELESA+GANTER subsidiaries offer a pool of specialised engineers, constantly in contact with R&D departments at both the parent companies in Italy and Germany, to develop special executions or new technical solutions meeting customers' specific requirements.

Stock availability on site ensures local customers receive standard elements with reduced delivery times whilst providing timely and reliable answers.

Over 80.000 product codes distributed in more than 70 industrialised countries with local presence and the highest technical consultancy.



Elesa+Ganter Austria GmbH



Elesa+Ganter Iberica S.L.



Elesa+Ganter Polska Sp. z o.o.



Elesa+Ganter China CO., LTD.



Elesa+Ganter CZ s.r.o.



Elesa+Ganter India PVT LTD



Elesa+Ganter Türkiye



Elesa+Ganter B.V. (Netherlands)

DESIGNED FOR ENGINEERING

Designing and manufacturing technical solutions for the mechanical industry represent the achievement and the commitment of Elesa and Ganter.

A guarantee for leading-edge benefits for the customers.



POINTS OF STRENGTH

- Technological background from two established parent companies
- Innovation in combination with decades of experience
- Unique design
- Optimised and widest product range of standard machine elements, driven by the market
- Worldwide distribution network
- Full stock availability with fast delivery times
- Customised solutions
- Perfect service including technical assistance

QUALITY AND DESIGN

To always offer unique and recognizable products anywhere in the world: a commitment since 1977. ELESAGANTER product range contributes to improve the quality of the machines and equipment they are destined for. Constant research on ergonomics, production materials and functionality results in a range characterised by a quality that can be appreciated by hand, and a unique design as proven by **106 industrial design awards** by the most prestigious international juries.



reddot design award

Reddot Design
(15)



Good Design



Fluidtrans
Compomac



IF Design Awards
(67)



Design Stuttgart
(5)



Compasso d'Oro
(2)



Produkt Roku
(3)



HaPes Award



PPMA Industry



Leap Award



German Design Award
(9)

THE ITALIAN PARENT COMPANY



For over 80 years ELESa has been the international reference for standard components destined to the mechanical and machinery industrial equipment sectors.



Elesa S.p.A. Headquarters Monza (Milan) Italy



Elesa France S.A.



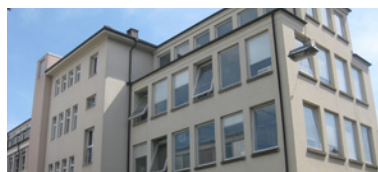
Elesa (UK) Ltd



Elesa USA Corporation



Elesa Scandinavia AB (SE)



MOZAIR SA - An Elesa Company



Elesa Canada Ltd.

ABOUT ELESa

Established in 1941 in Italy, ELESa has earned the status as a reference point for designers and machine builders. An excellent combination of technology and design has given rise to a diverse production thanks to the constant commitment to follow developments in engineering plastics and their processing technology.

A corporate culture strongly committed to product quality combined with an innate sensitivity for design and ergonomic research has led to the creation of products unique and recognisable worldwide as ELESa products. An authentic "Made in Italy" which has become popular around the world and particularly appreciated by the most qualified machine manufacturers.

Since the 50's, ELESa has been actively involved in the cultural revision of machine tool aesthetics, that was taking shape around that time, by innovating the design of accessories and components for the mechanical industry, machinery and industrial equipment.

An ongoing commitment to which ELESa has always been loyal over the decades, as proven by the 44 industrial design awards from the most prestigious juries, received in the last 40 years and the 300 patents and registered designs. ELESa continues to invest in R & D and in particular in the innovation of its production technologies aiming to creating new products or to further improve performances and reliability of the existing ones.

Tens of millions of pieces are produced every year at the parent company in Monza using the latest automated production technologies.

A keen dedication to product quality combined with Italian design represent in brief ELESa company culture.



ELESa uses electricity produced only from 100% renewable sources, i.e. energy produced through the use of natural resources (water, sunlight, wind, tides, geothermal heat, etc.) which therefore do not involve CO2 emissions (which are instead produced by coal, oil and gas). With this logo Elesa qualifies its sensitivity towards environmental issues.



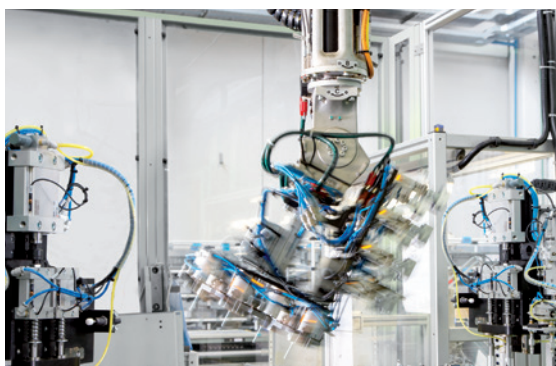
Production facilities in Monza (Italy)



Logistic centre



R&D Department - Test Laboratory



Automatic production unit



Italian Association
of Machine Tool Manufacturers



Italian Packaging Machinery
Manufacturers Associations

ADIMEMBER

SOCIO UNI

ITALIAN INSTITUTE OF UNIFICATION

AIPPI

Associazione Internazionale
per la Protezione della
Proprietà Intellettuale



Deutsch-Italienische
Handelskammer
Camera di Commercio
Italo-Germanica

All standard products in the ELESa range are subject to mechanical, physical, chemical and durability testing in order to provide correct and reliable technical data.

Most of the tests are carried out in the ELESa laboratory, a modern facility equipped with the most advanced testing instruments which is also at the disposal of customers for carrying out tests that simulate specific or particularly heavy conditions of use.



Full Authorised
Economic Operator



Quality Management



Environmental Management



Occupational Health and
Safety Management

THE GERMAN PARENT COMPANY



GANTER's well proven expertise with more than 125 years of market-leadership in standard parts for every sector of the industry speaks for itself.



Otto Ganter GmbH & Co. KG Headquarters in Furtwangen (Germany)



Ganter Logistic Center



Production plant in Rheinhausen



Otto Ganter published the first catalogue for standard parts in 1912.

ABOUT GANTER

Established in 1894 as a mechanical workshop, Ganter released the first catalogue for standard parts as early as 1912 – five years before the foundation of the Deutsche Industrie Norm (DIN). The idea of standardizing industrial products, manufacturing them in economical lot sizes, storing and selling them individually was entirely new at that time. Right to this day, this principle has been the foundation of our actions which, thanks to broad availability and the latest in production engineering, guarantee ultimate benefits for the customer.

LEADING WORLDWIDE

Ganter is at the leading edge in the development, production and marketing of standard parts for the entire industry. Quality and volume of production selection set the standards across all industries. Ganter's standard parts are offered worldwide through an efficient sales network. Quality, advice and availability are thus guaranteed – wherever you are located.

GANTER customers appreciate and benefit from a strong service orientation for special requests, automated warehouses with everything on stock and a quick service. German accuracy is found in each standard and customized part at every branch location.



Automated Warehouse



Test laboratory



Production unit

SERVICE INCLUSIVE

Ganter's unique range of standard parts has the appropriate product for virtually every possible application – or if not, help is at hand for customized solutions. One thing is certain, though: Standard parts from Ganter come from a single source and offer the best possible support to the design and procurement process.



QUICK AND DIRECT

Thanks to an efficient logistics approach, Ganter is capable of delivering standard parts in the shortest possible time – anywhere in the world.



WORLDWIDE SALES NETWORK

Elesa+Ganter distribution network reaches more than 70 different countries worldwide. Thanks to the close relationship with the headquarters, ELESA+GANTER subsidiaries and distributors are able to provide customers with the highest technical support.



AMERICA

Argentina
Brazil
Canada
Mexico
USA

AFRICA

Egypt
South Africa

ASIA

China	Malaysia	Turkmenistan
Georgia	Philippines	Uzbekistan
India	Singapore	Vietnam
Indonesia	South Korea	
Israel	Taiwan, sales area	
Japan	Thailand	
Kazakhstan		



SCAN to find ELESa+GANTER
in your country on
elesa-ganter.com



EUROPE

Albania
Austria
Belarus
Belgium
Bosnia-Herzegovina
Bulgaria
Croatia

Cyprus
Czech Republic
Denmark
Estonia
Finland
France
Germany

Great Britain
Greece
Hungary
Iceland
Ireland
Italy
Kosovo

Latvia
Lithuania
Luxemburg
Macedonia
Moldova
Montenegro
Netherlands

Norway
Poland
Portugal
Romania
Russia
Serbia
Slovakia

Slovenia
Spain
Sweden
Switzerland
Turkey
Ukraine

OCEANIA

Australia
New Zealand

HIGH PERFORMING ITEMS

Standard components with innovative features, ergonomic design in compliance with strict directives to meet specific needs and applications.

STAINLESS STEEL CORROSION RESISTANCE



Due to its high corrosion resistance, stainless steel is one of the most sought-after materials in many sectors of the mechanical industry.

ELESA+GANTER product range includes a wide assortment of special AISI stainless steel products throughout all product groups. It covers both stainless steel standard elements as well as technopolymer standard elements with stainless steel metal inserts.

Designed for: food-processing, chemical and pharmaceutical industries, difficult environmental conditions and for all applications where provisions of law make it mandatory to use corrosion resistant materials.

WHITE FOR DIRT-PROOF SURFACES



RAL 9002 white colour is particularly suitable in medical environments, as it allows the prompt identification of any dust or dirt traces, making cleaning operations easier. From a psychological point of view, it also gives the operators and the patients a sense of sterility and maximum cleanliness.

Compact shapes and lack of cavities allow avoiding any deposit of dirt, dust and machining residues.

ELESA+GANTER product range includes an assortment of handles and clamping knobs in white technopolymer, also with stainless steel inserts.

Designed for: medical and hospital equipment.

SANITISATION AGAINST BACTERIA AND FUNGI



SAN LINE products avoid reproduction of undesired bacterial organisms which can cause unpleasant odours, discoloration, degradation and formation of biofilm on surfaces.

Handles and knobs containing antimicrobial additives (source of silver ions on an inorganic base without antibiotics or pesticides) or coated with a special finishing material to offer an efficient protection against bacteria spreading.

Designed for: disability aids, medical and hospital equipment.

COMFORTABLE AND SAFE GRIP



SOFT-TOUCH product line features a soft and slip-proof surface to ensure a safer and more stable ergonomic grip even under unfavourable conditions of use such as in the presence of moisture and grease.

Moreover, SOFT-TOUCH allows a better force transfer between hand and operating elements and ensures the absorption of vibrations during operations.

Designed for: disability aids, high-precision instruments, fitness machines, gardening and unfavourable climatic conditions.

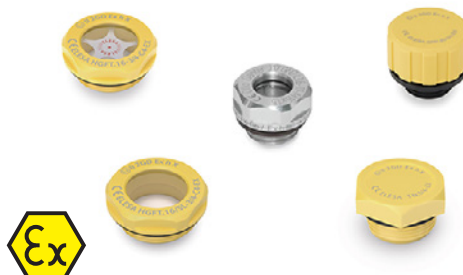
CONDUCTIVE TECHNOPOLYMER



ESD line products are suitable in EPA environments (ESD Protected Areas) where components are susceptible to electrostatic discharges and have to be handled with the minimum risk of damage. The special conductive technopolymer (ESD-C Electrostatic Discharge Conductive) prevents the accumulation of electrostatic charge between bodies with different electric potential. The special mark ESD-C is laser-engraved indelibly on each element according to EN 100015/1 and IEC 61340-5-1.

Designed for: assembly lines for electronic components, ESD-Protected Area (EPA).

COMPLIANT WITH ATEX EUROPEAN DIRECTIVE



Components complying with health and safety requirements according to 94/9/EC ATEX European directive (explosive atmospheres) for equipment in Group II, category 2GD. ELESa+GANter extensive range of oil level sight glasses and plugs provides solutions for highly demanding requirements, such as high temperatures, high pressure loads or aggressive substances.

Designed for: equipment and machines, such as hydraulic components and gears, for use in environments subject to explosion risk.

SELF-EXTINGUISHING TECHNOPOLYMER



Standard elements for applications in public environments where there is risk of fire, such as in the lighting sector. ELESa+GANter elements made in self-extinguishing special technopolymer certified "V0" in accordance with UL-94 V (Underwriters Laboratories). This classification is used to describe the reaction of plastics to flames. Laboratory tests proved that under vertical burning each individual sample requires less than 10 seconds to extinguish flames.

Designed for: entertainment equipment, urban and public fittings.

STANDARD MACHINE ELEMENTS FOR PROFILE SYSTEMS



Standard elements in this product line are compatible with the most common aluminium profile systems. Using matching assembly sets, the ELESa+GANter standard elements are easily and cost-effectively connected with the profiles without time-consuming compiling of individual parts in the order.

- Compatible with the common profile systems
- For groove widths of 6, 8 and 10 mm
- For profiles 30, 40 and 45 mm

Designed for: assembly on common profile systems for various different sectors.

STAINLESS STEEL PRODUCTS

Standard parts made of rustproof stainless steel have been designed for use in the food sector, in the chemical industry, for aggressive ambient conditions or for outdoor use.



STAINLESS STEEL PRODUCT LINE

Standard parts made of rust-proof Stainless Steel grades—designed for use in the food industry, the chemical industry or in general for use in aggressive atmospheres or outdoors. Normally made with galvanic surface treatment, standard parts in the Stainless Steel product family are not only corrosion-resistant, but also precisely fitting and environmentally friendly.

- Excellent corrosion resistance
- Durable
- Robust

ERGONOMICS AND DESIGN

Good design and ergonomics should start with a thorough understanding of the product's functions and the interaction between man and machine, taking into account the full set of movements involved in each operation.



FIVE POINTS

a discrete trademark that distinguishes all
ERGOSTYLE® products



ERGOSTYLE® PRODUCT LINE

ERGOSTYLE® products combine perfectly with the machines and equipment they are destined for, contributing to enhance their value and quality.

ERGOSTYLE® was conceived at the beginning of the '90s, for a series of new markets such as hospital, medical, sports and leisure equipment, scientific instrumentation and office furniture requiring, in addition to pure functionality, a particular care in ergonomics and design.

Nowadays, ERGOSTYLE® is accepted and requested by a growing number of traditional industrial sectors where machines and equipment have undergone, over the last few decades, a profound aesthetic and design renovation.

- Perfect functionality
- Modern lines and ergonomic shapes
- Inserts in the standard ELECOLORS®

ERGOSTYLE® obtained several of the world's most distinguished recognitions in Industrial Design



reddot award 2015
winner

HYGIENIC DESIGN

In the food industry, medical technology and the pharmaceutical industry, product safety and consumer protection are becoming increasingly important.

Due to their specific properties, standard parts in Hygienic Design can assist the production process in these sensitive areas and facilitate the manufacture of products with a long shelf life, which are free from preservatives.



HYGIENIC DESIGN PRODUCT LINE

Standard parts of the Hygienic Design product family are labeled with the HD icon. They combine high surface quality, freedom from dead spaces, non-scooped outer surfaces, and sealed bolting areas. A sealing concept based on FEM calculations ensures reliable contact pressure after installation.

Hygienic Design also means that the time and material needed for regular cleaning is significantly reduced – which also noticeably lowers operating costs.

Less and shorter cleaning work (this can be up to 25% of the production time), therefore

- More time available for production
- Less fresh water consumption
- Lower energy consumption
- Less cleaning agent required
- Less production of waste water
- Lower total costs and saving of resources

SUPER-TECHNOPOLYMER

Technopolymer with high mechanical and thermal performances.
The latest evolution in engineering polymer materials for the industrial sector.



SUPER-TECHNOPOLYMER PRODUCT LINE

The most technologically advanced industries, such as automotive, aerospace and electronics, have long ago understood the many benefits arising from the use of engineering plastics.

- High mechanical performance
- Corrosion resistance
- Lightness
- Non magnetic
- Low coefficient of friction
- Maintenance free
- Thermal insulation

This evolution goes beyond the simple use of high performance engineering plastics as an alternative to metal. In fact, to manufacture technopolymer products suitable for applications which generally required metal products, the design phase needs to be performed with great expertise by optimising shapes and thickness, to benefit from all the typical characteristics of polymeric materials.

The range presents several components made of SUPER-Technopolymer able to combine favourably the advantages of engineering plastics with those of metal.

CUSTOMISED SOLUTIONS

ELESA's and GANTER's modern and automated production facilities, together with their know-how in design and manufacture are at the disposal of all customers for the development of new technical solutions and customised production.



FULL TECHNICAL AND MANUFACTURING COMPETENCE

In addition to the wide range of standard machine elements, the strong customer orientation and production flexibility of the two parent companies allow for the offering of customised technical solutions meeting specific requirements. Both Technical Departments are able to provide a cost-effective solution by modifying an existing ELESA+GANTER standard part or by going all the way back to the drawing board.

- Special shapes, dimensions, threads.
- Special colours
non standard colour options.
- Special surface treatments
plastic powder coating, zinc, nickel and chrome plating, anodising.
- Special product branding
logos and texts by tampoprinting, laser-engraving and moulding.

THE ELESA+GANTER RANGE

Look for the perfect components for your application on:

ELESA+GANTER.COM

Browse the range from all devices and stay always up to date with our new products and range extensions.

Moreover, **My E+G** area allows to download 2D and 3D CAD drawings, ask for quotations and manage personal favourites list!



Follow us:



2D & 3D CAD drawings in your required format



News Extra contents regarding products, applications and corporate highlights



Newsletter Subscribe to the newsletter and stay tuned about new products and interesting technical details



Videos and 3D animations To deepen applications, technical features and usage of ELESA+GANTER products

THE GENERAL CATALOGUE

More than a catalogue: a single volume for over 60.000 product codes always at your hand.

■ **2.120** pages

An essential working tool for designers and engineers: keep all the datasheets and technical information on your desk.

Ask for your copy!



GENERAL INDEX

1 Operating elements

Spoked handwheels,
Solid handwheels,
Arm handwheels,
Crank handles



2 Clamping knobs

Star and lobe knobs,
Knurled knobs,
Wing knobs



3 Clamping levers

Adjustable handles,
Lever handles



4 U-Handles

Bridge handles,
Arch and finger handles,
Folding handles,
Ledge and safety handles,
Flush pull handles,
Tubular handles



5 Fixed, revolving and fold-away handles

Fixed handles,
Revolving handles,
Fold-away handles



6 Control elements

Control knobs,
Rulers,
Control levers,
Bull's eye levels



7 Rotary controls

Gravity indicators,
Positive drive indicators,
Direct drive indicators,
Handwheels with indicator



8 Indexing elements

Indexing plungers,
Cam action indexing plungers,
Lock pins,
Spring plungers



9 Machine elements

Screws, Thrust pads, Rings,
Washers, Nuts, Positioning
elements, Quick release
couplings, Cam locking levers,
Lifting accessories



10 Joints, Couplings, Gears

Joints,
Couplings,
Gears



11 Levelling elements

Levelling elements,
Bearing end caps



12



Hinges

for thin frames, adjustable, with adjustable friction, with indexing function, Spring, Lift-off, with electrical safety switch, concealed



13



Latches

Latches with handle, Latches with clamping function, Latches with key, Snap locks, Latches with indexing function, Edge protection profiles



14



Toggle, power and hook clamps

Toggle clamps, Power clamps, Hook clamps



15



Accessories for hydraulic systems

Plugs, Breather caps, Level indicators, Column level indicators, Flexible coolant hoses, Seals



16



Tube clamp connectors

Tube clamp connectors, Clamp mountings, Tube connectors, Angle brackets



17



Castors and wheels

Polyurethane wheels, Technopolymer wheels, Rubber wheels, Duroplast wheels



18



Retaining magnets

Disc-shaped, Rod-shaped, U-Magnets, Raw magnets



19



Conveyor components

Supports and guides, Transfer units



20



Linear motion components

Telescopic slides, Linear slides for smooth linear movement, Linear guide rail systems, Linear actuators and linear actuators connectors, Adjustable slide units



21



Vibration mounts

Rubber buffers, Anti-vibration mounts, Spring mounts and wire rope isolators



1 | OPERATING ELEMENTS



Spoked handwheels | Solid handwheels |
Arm handwheels | Crank handles

Steering handwheels and crank handles made in Duroplast, technopolymer, aluminium or stainless steel. Spoked, solid and arm-shaped handwheels, with or without handle, featuring ergonomic and unique design.

Full range available on [elesa-ganter.com](https://www.elesa-ganter.com)

VRTP.

Spoked handwheels

Technopolymer
Diameters:
80 to 375 mm



GN 924

Spoked Handwheels

Aluminum,
Powder coated
Diameters:
125 to 200 mm



VR.FP

Spoked handwheels

Duroplast, not drilled
hub
Diameters:
100 to 375 mm



GN 950.6

Stainless Steel Handwheels

Diameters:
100 to 200 mm



EMW.

Monospoke handwheels

Technopolymer
Diameter: 350 mm



EYK.

Three-arm handwheels

Technopolymer
Diameters:
275 to 400 mm



VDS.

Solid handwheels

Technopolymer
Diameters:
80 to 300 mm



VDN.FP

Solid handwheels

Duroplast, steel hub
Diameters:
50 to 350 mm



GN 923.3

Handwheels with Retractable Handle

Aluminum
Diameters:
100 to 200 mm



GN 321.6

Safety Handwheels

Aluminum,
with Needle Bearings
Diameters:
140 to 160 mm



MT.

Crank handles

Technopolymer
Dimensions:
50 to 210 mm



EKH.

Crank handles

Technopolymer
Dimensions:
100 to 125 mm



GN 269

Stainless Steel Cranked Handles

Diameters:
80 to 200 mm



GN 472.3

Cranked Handles with Retractable Handle

Aluminum, Retractable
Mechanism Steel
Diameters:
80 to 125 mm



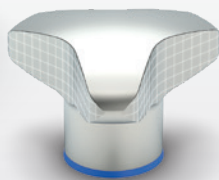
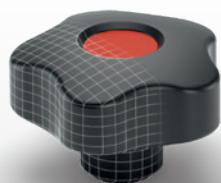
DIN 468

Cranked Handles

Cast Iron
Diameters:
63 to 315 mm



2 | CLAMPING KNOBS



Star and lobe knobs | Knurled knobs |
Wing knobs

Clamping knobs for clamping operations in all market sectors. Design and quality of materials are combined to offer a wide range in different shapes and dimensions and also with limiting-torque mechanism.

Full range available on elesa-ganter.com

VB.639

Three-arm knobs

Technopolymer
Diameters:
45 to 130 mm



VTT

Solid knobs

Technopolymer, easy
cleaning
Diameters:
25 to 60 mm



GN 5345.4

Stainless Steel Three-Lobed Knobs

AISI 316L
Diameters:
25 to 60 mm



VCT.

Lobe knobs

Technopolymer
Diameters:
25 to 95 mm



VC.692

Lobe knobs with solid section

Technopolymer, easy
cleaning
Diameters:
25 to 60 mm



GN 5335

Stainless Steel Star Knobs

AISI 303
Diameters:
40 to 60 mm



DIN 6335

Hand Knobs

Cast Iron / Zinc Plated /
Stainless Steel / Aluminum
Diameters:
32 to 100 mm



GN 5339.5

Stainless Steel Triangular Knobs

Diameters:
32 to 60 mm



BT.

Fluted grip knobs

Technopolymer
Diameters:
12 to 50 mm



B.193

Knurled grip knobs

Duroplast
Diameters:
15 to 50 mm



DIN 464

Knurled Screws

Steel / Zinc Plated /
Stainless Steel
Diameters:
4 to 40 mm



MBT.

Diamond cut knurled knobs

Technopolymer
Diameters:
30 to 70 mm



GN 3663

Torque Limiting Knurled Knobs / Knob Screws

Diameters:
27 to 62 mm



EWN.

Wing knobs

Technopolymer
Diameters:
40 to 70 mm



GN 835

Stainless Steel Wing Screws

Diameters:
46 to 58 mm



3 | CLAMPING LEVERS



Adjustable handles | Lever handles

Clamping levers made in technopolymer, zinc-alloy or in stainless steel, with metal inserts also available in stainless steel. Elegant and modern shapes ensuring comfort and performances at their best.

Full range available on elesa-ganter.com

ERX.

Adjustable handles

Technopolymer
Dimensions:
30 to 108 mm



ERZ.

Adjustable handles

Technopolymer, steel or
stainless steel clamping
element
Dimensions:
44 to 95 mm



ERS.

Safety adjustable handles

Push action, technopolymer
Dimensions:
44 to 63 mm



GN 300.5

Adjustable Stainless Steel Hand Levers

Matte Shot-Blasted
Dimensions:
30 to 92 mm



GN 300.4

Adjustable Hand Levers

Zinc Die Casting, with
Increased Clamping
Force
Dimensions:
63 to 108 mm



MRX.

Adjustable handles

Technopolymer
Dimensions:
42 to 100 mm



MR.

Adjustable handles

Technopolymer
Dimensions:
42 to 100 mm



MRT.

Adjustable handles

Technopolymer
Dimensions:
42 to 80 mm



ERW.

Adjustable handles

Flat lever, technopolymer
Dimensions:
30 to 78 mm



GN 212.5

Adjustable Stainless Steel Tension Levers

Dimensions:
21 to 28 mm



GN 927

Clamping Levers with Eccentric Cam

with Internal Thread /
with Threaded Stud,
Contact Plate Plastic
Dimensions:
44 to 101 mm



LAC.

Cam clamping levers

Technopolymer
Dimensions:
44 to 79 mm



ERF.

Lever handles

Technopolymer
Dimensions:
44 to 95 mm



GN 316

Ratchet Spanners

Dimensions:
12 to 26 mm



DIN 99

Clamping Levers

Steel / Stainless Steel
Dimensions:
50 to 200 mm



4 U-HANDLES



Bridge handles | Arch and finger handles |
Folding handles | Ledge and safety handles
Flush pull handles | Tubular handles

U-handles, flush pull handles, snap-in assembly or tubular handles in different materials, shape, type of assembly, colour options and lengths. Design, ergonomics and the possibility of customisations allow the applications in many market sectors.

Full range available on elesa-ganter.com

GN 565

Cabinet U-handles

Aluminum
Centre distance:
100 to 500 mm



M.843

Bridge handles

Technopolymer
Assembly centre
distance:
86 to 300 mm



M.643

Bridge handles

Technopolymer
Assembly centre
distance:
86 to 300 mm



EBP.

Bridge handles

Technopolymer
Assembly centre
distance:
94 to 180 mm



M.443

Bridge handles

Technopolymer
Assembly centre
distance:
94 to 235 mm



GN 428

Cabinet U-Handles

Aluminum
Centre distance:
200 to 800 mm



GN 559

Cabinet U-Handles

Aluminum
Centre distance:
162 mm



GN 425

Cabinet U-Handles

Steel / Aluminum /
Stainless Steel
Centre distance:
32 to 300 mm



GN 565.9

Stainless Steel Arch Handles

Centre distance:
160 to 192 mm



GN 425.8

Folding Handles with Recessed Tray

Steel / Stainless Steel
Centre distance:
100 to 120 mm



ESP.

Guard safety handles

Technopolymer
Assembly centre
distance:
94 mm



EPR-PF

Flush pull handles

for snap-in assembly,
technopolymer
Dimensions:
90 to 120 mm



GN 331

Tubular Handles

with Electrical Switching
Function
Centre distance:
200 to 300 mm



ETH.

Tubular handles

Technopolymer and
aluminium
Assembly centre
distance:
300 to 1000 mm



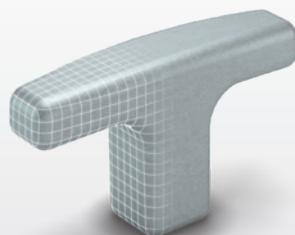
M.1053

Offset tubular handles

Technopolymer and
aluminium
Assembly centre
distance:
300 to 700 mm



5 | FIXED, REVOLVING AND FOLD-AWAY HANDLES



Fixed handles | Revolving handles |
Fold-away handles

Fixed handles are used on rods or actuating levers to facilitate gripping. Revolving handles are designed for handwheels and crank handles for rotating and steering operations. Fold-away handles complete the range.

Full range available on elesa-ganter.com

L.652

T-Handles

Technopolymer
Dimensions:
40 to 94 mm



I.622

Tapered handles

Technopolymer
Dimensions:
25 to 55 mm



DIN 319

Ball Knobs

Plastic / Steel /
Aluminum /
Stainless Steel
Dimensions:
10 to 50 mm



EBK.SOFT

Mushroom lobe handles

"Soft-touch"
technopolymer
Dimensions:
43 to 50 mm



EKK.

Knurled grip knobs

Technopolymer
Dimensions:
16 to 35 mm



GN 676.5

Stainless Steel Knobs

Dimensions:
21 to 31 mm



GN 75.6

Waist Shaped Stainless Steel Knobs

Hygienic Design
Dimensions:
20 to 32 mm



GN 310

Gear Lever Handles

Steel, Zinc Plated /
Stainless Steel
Dimensions:
63 to 250 mm



I.280

Cylindrical handles

Duroplast
Dimensions:
28 to 115 mm



I.780+x

Cylindrical revolving handles

Technopolymer
Dimensions:
40 to 100 mm



I.621+x

Revolving handles

Technopolymer
Dimensions:
35 to 101 mm



GN 798.1

Revolving Stainless Steel Handles

Mounting from the Back
Dimensions:
18 to 24 mm



DIN 98

Revolving Handles

Spindle Steel,
Zinc Plated
Dimensions:
16 to 36 mm



GN 798.5

Retractable Handles

Retractable Mechanism
Stainless Steel, Locked
in Operating Position
Dimensions:
16 to 25 mm



IRS.820

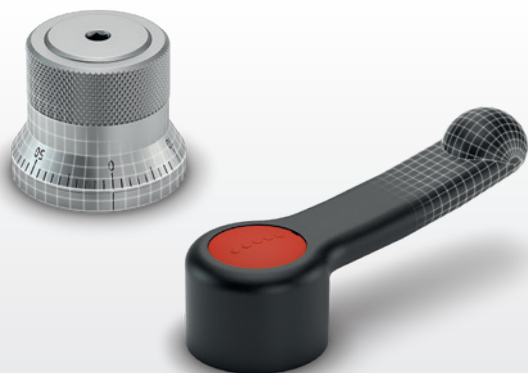
Safety fold-away handles

Technopolymer
Dimensions:
65 to 90 mm



Fixed, revolving and fold-away handles

6 | CONTROL ELEMENTS



Control knobs | Rulers | Control levers |
Bull's eye levels

Control knobs and levers for use on precise instruments performing adjustment operations or precise alignment of machine parts. Made in technopolymer or metal, coloured caps, with or without flange with index or graduations.

Full range available on elesa-ganter.com

GN 164

Scale Rings

Diameters:
30 to 60 mm



GN 726.2

Control Knobs

Aluminum,
with Scale Ring
Diameters:
22 to 42 mm



IZP.

Knurled control knobs

Technopolymer
Diameters:
27 to 40 mm



IZN.380

Knurled control knobs

Technopolymer
Diameters:
32 to 80 mm



MBR

Diamond cut knurled control knobs

with collar or flange,
technopolymer
Diameters:
30 to 50 mm



GN 436

Stainless Steel Control Knobs

Diameters:
24 to 28 mm



EGK.SOFT

Grip knobs

arranged for clicking
operation
Diameters:
50 to 63 mm



GN 736.1

Control Handwheels with Scale Lug / Standard Scale

Aluminum, Black
Anodized
Diameters:
52 to 62 mm



MBT+I

Diamond cut knurled control knobs

with revolving handle,
technopolymer
Diameters:
40 to 100 mm



GN 827

Stainless Steel Adjusting Screws

for Bearing Blocks
GN 828
Diameters:
M6x1 to M10x1



GN 200

Indexing Mechanisms

Steel / Stainless Steel
Dimensions:
44 to 52 mm



LBR.

Control levers

arranged for clicking
operation, technopolymer
Dimensions:
81 to 170 mm



ELC.

Control levers

arranged for clicking
operation, technopolymer
Dimensions:
67 to 140 mm



GN 2282

Screw-On Spirit Levels

for Mounting
with Screws
Dimensions: 57 mm



BOL-MF

Level bubbles

with mounting flange



7 | ROTARY CONTROLS



Gravity indicators | Positive drive indicators |
Direct drive indicators | Handwheels with indicator

Rotary controls available with metal or technopolymer case. Analogue, digital-analogue, digital or LCD type of reading. Gravity or positive drive indicators can be matched to handwheels for coupling to drive shafts. Direct drive indicators are directly assembled on shafts in any position.

Full range available on elesa-ganter.com

GA01 - GA02 - GA05

Position indicators

gravity drive, steel
Diameters:
50 to 113 mm



GA11 - GA12

Position indicators

gravity drive, technopolymer
Diameters:
50 to 68 mm



MBT-GA

Knobs with integral indicator

gravity drive, technopolymer
Diameters:
51 to 70 mm



GW12

Digital-analogue position indicators

gravity drive, technopolymer
Diameters: 68 mm



PW12

Digital-analogue position indicators

positive drive, technopolymer
Diameters: 68 mm



DD50

Mechanical position indicators

direct drive, 3-digit counter, technopolymer
Boss: Ø 10 H7 mm



DD51

Mechanical position indicators

direct drive, 4-digit counter, technopolymer
Boss: Ø 14 H7 mm



DD52R

Mechanical position indicators

direct drive, 5-digit counter, technopolymer
Boss: Ø 20 H7 mm



DD51-E - DD51-E-RF

Electronic position indicators

direct drive, 5-digit display, technopolymer
Boss: Ø 14 H7 mm



DD52R-E - DD52R-E-RF

Electronic position indicators

direct drive, 6-digit display, technopolymer
Boss: Ø 20 H7 mm



UC-RF

Control unit for DD52R-E-RF

PLC connection, data transmission via radio frequency



MPI-R10 - MPI-R10-RF

Magnetic measuring system

Length and angle modes
Multifunction LCD with 4 function keys



VC.792-XX

Lobe knobs for position indicators

Technopolymer
Diameters:
72 to 98 mm



VDSC-XX

Handwheels for positions indicators

Technopolymer
Diameters:
125 to 200 mm



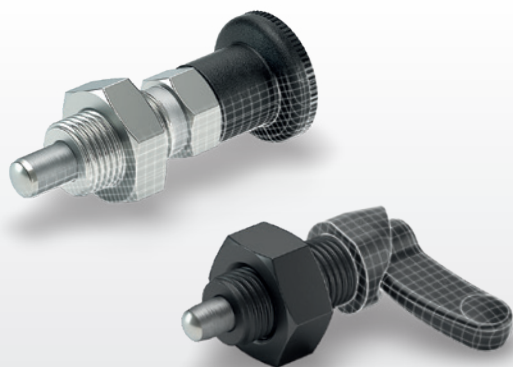
VDN-XX

Handwheels for position indicators

Duroplast
Diameters:
249 to 350 mm



8 INDEXING ELEMENTS



Indexing plungers | Cam action indexing plungers | Lock pins | Spring plungers

Indexing plungers, lock pins, spring plungers and cam action indexing plungers to facilitate repetitive positioning operations on machines and equipment.

Full range available on elesa-ganter.com

GN 617

Indexing Plungers

Steel / Stainless Steel
without Rest Position
Plunger Ø: 5 to 10 mm



PMT.100

Indexing plungers

SUPER-technopolymer
body
Plunger Ø: 5 to 10 mm



GN 8170

Stainless Steel Indexing Plungers

Hygienic Design, Knob
Side (Front Hygiene) /
Knob and Pin Side (Full
Hygiene)



GN 8177

Stainless Steel Indexing Plungers

Pneumatically Operated
Plunger Ø: 6 to 12 mm



GN 7017

Indexing Plungers

Steel / Stainless Steel,
with Lever, with and
without Rest Position
Plunger Ø: 4 to 10 mm



GN 822

Mini Indexing Plungers

Steel / Stainless Steel,
with and without Rest
Position
Plunger Ø: 4 to 7 mm



GN 414

Indexing Plungers

Steel / Stainless Steel,
with Safety Lock,
Unlocking with
Push-Button
Plunger Ø: 6 to 10 mm



GN 7336.8

Clamping Indexing Plungers

with Safety Function
Plunger Ø: 6 to 8 mm



GN 722.2

Spring Latches

Steel / Stainless Steel,
with Flange for Surface
Mounting, Right-Angled
to the Plunger Pin
Plunger Ø: 8 to 20 mm



GN 612

Cam Action Indexing Plungers

Steel / Stainless Steel
Plunger Ø: 4 to 12 mm



PMT.200

Indexing plungers

Rest position, SU-
PER-technopolymer
body
Plunger Ø: 4 to 10 mm



GN 114.2

Locking Pins

with Axial Lock (Pawl)
Plunger Ø: 6 to 20 mm



GN 111.2

Stainless Steel Retaining Cables

with Key Rings or One Key
Ring and One Mounting Tab /
with Mounting Tabs or Loops
Length: 150 to 500 mm



GN 615.3

Spring Plungers

Steel / Stainless Steel,
with Ball,
with Internal Hex
Plunger Ø: 1.5 to 15 mm



GN 416

Spring Latches

Plunger Ø: 6 to 12 mm





Screws | Thrust pads | Rings | Washers | Nuts
Positioning elements | Quick release couplings |
Cam locking levers | Lifting accessories

A wide range of mechanical components such as screws, thrust pads, ring, washers and nuts as well as positioning elements, quick release couplings, cam locking levers and lifting accessories.

Full range available on elesa-ganter.com

ISO 7379

Shoulder Screws

Steel / Stainless Steel,
with Collar
Length:
4 to 100 mm



DIN 6332

Grub Screws

Steel / Stainless Steel,
with Thrust Point
Length:
30 to 150 mm



GN 1580

Stainless Steel Nuts / Stainless Steel Screws

Hygienic Design
Length: 8 to 70 mm



GN 1582

Stainless Steel Screws

Hygienic Design, Low-Profile
Head, with Recessed Stud
for Loss Protection
Length: 20 to 50 mm



GN 933.5

Stainless Steel Hex Head Screws

with Brass / Plastic /
Spherical Pivot
Diameters: M6 to M10



DIN 444

Swing Bolts

Steel / Stainless Steel
Length:
50 to 160 mm



GN 346

Ball Joint Thrust Pads

Dimensions:
M8 to M16



GN 705

Shaft Collars

Steel / Zinc Plated /
Stainless Steel
Dimensions:
5 to 80 mm



ANPS

Dismountable split set collars

Clamping assembly,
technopolymer
Internal diameters:
12 to 70 mm



GN 706.4

Semi-Split Shaft Collars

Steel / Stainless Steel /
Aluminum, with
Adjustable Hand Lever
Diameters: 32 to 65 mm



GN 350.3

Spherical Leveling Washers

Steel / Stainless Steel
Dimensions:
25 to 105 mm



GN 6341

Washers

Steel / Stainless Steel
Dimensions:
10 to 40 mm



CMC

Torque amplifier collar

Technopolymer
Diameter: 32 mm



DIN 508

T-Nuts

Steel / Stainless Steel
Dimensions:
M4 to M36 mm
Width: 5 to 42 mm



DIN 787

T-Slot bolts

Diameters:
M6 to M24 mm



ISO 8675

Thin Hex Nuts

Steel / Stainless Steel,
with Metric Fine Thread
Dimensions:
M8 to M24



GN 1804.1

Slotted Locknuts

Self-Locking, with
Polyamide Insert
Dimensions:
18 to 80 mm



DIN 172

Guide Bushings

Drill Bushings,
with Collar
Dimensions:
B0.6 to B42
Height:
6 to 67 mm



GN 408.1

Positioning and Supporting Elements

with Threaded Stud
Dimensions:
M6 to M16



GN 360

Leveling Sets

Steel / Stainless Steel
Dimensions:
40 to 65 mm



GN 6220

Spacers

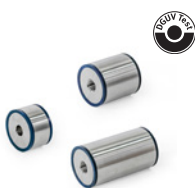
Steel / Stainless Steel
Dimensions:
M2.5 to M10



GN 6226

Stainless Steel Spacers

Hygienic Design
Dimensions:
22 to 34 mm



GN 1050

Quick Release Couplings

Dimensions:
M10 to M12 mm



GN 240

Quick-Fit Couplings

with Radial Off-Set
Compensation
Dimensions:
M6 to M20



GN 918.6

Stainless Steel Clamping Bolts

Upward Axial Clamping
Dimensions:
40 to 50 mm



GN 9190

Side Clamps

with Eccentric Cam
Lever
Dimensions:
M8 to M12 mm



GN 9192

Down-Thrust Clamps

Dimensions:
M8 to M12 mm



GN 187.4

Serrated Locking Plates

Steel / Stainless Steel
Dimensions:
22 to 40 mm



RDB

Toothed clamping elements

SUPER-technopolymer
Dimensions:
32 to 40 mm



GN 917

Double Cam Levers

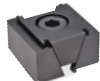
Dimensions:
8 to 12 mm



GN 920.1

Wedge Clamps

Dimensions:
M8 to M12 mm



GN 581

Lifting Eye Bolts (Rotating)

Dimensions:
M6 to M36



GN 587.1

Load Rings

for Welding
Dimensions:
66 to 129 mm



DIN 580

Lifting Eye Bolts

Steel / Stainless Steel
Dimensions:
M8 to M36



GN 585

Shackles

Cranked Version
Dimensions:
6 to 25 mm



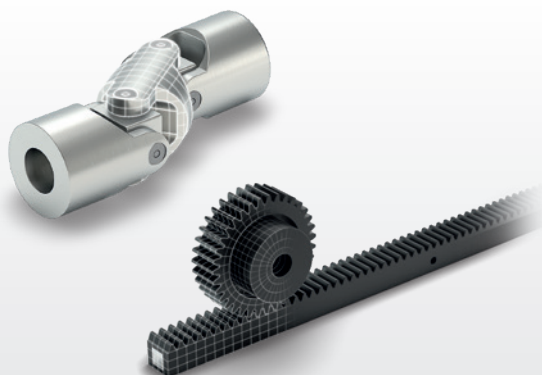
GN 1130

Lifting Pins

Steel / Stainless Steel,
Self-Locking
Dimensions:
8 to 20 mm



10 | JOINTS, COUPLINGS, GEARS



Joins | Couplings | Gears

Universal joints, joint shafts with needle or friction bearing, ball joint heads, axial ball joints, fork heads, quick-fit couplings made of steel or stainless steel. Several products as bevel gear boxes, gears, angular gears and transmission elements complete this group.

Full range available on elesa-ganter.com

DIN 808

Universal Joints with Friction Bearing / Needle Bearing

Steel / Stainless Steel,
Single or Double
Dimensions: 16 to 70 mm



GN 808.2

Universal Joint Shafts with Friction Bearing

with Longitudinal
Compensation
Dimensions:
22 to 58 mm



BJT.

Rod ends

Technopolymer
Hole dimensions:
6 to 14 mm



GN 648.6

Stainless Steel Ball Joint Heads with Threaded Bolt

Dimensions:
5 to 30 mm



GN 782

Ball Joints

Dimensions:
M6 to M12 mm



GN 751.1

Fork Joints

with Rotating Shaft
Dimensions:
5 to 12 mm



FJT.

Forks

Technopolymer
Hole dimensions:
6 to 14 mm



DIN 71802

Angled Ball Joints

Steel / Stainless Steel,
with Threaded Ball
Shank and Rivet Ball
Shank
Dimensions: 8 to 19 mm



GN 2246

Beam Couplings

Aluminum /
Stainless Steel,
with Clamping Hub
Dimensions:
12 to 32 mm



GN 3975

Worm Gear Reducers

Housing Aluminum
Gear ratio i: 13 to 65



ZCR

Racks

Technopolymer, pressure angle 20°
Module:
0.5 - 1.0 - 1.5 - 2.0 - 4.0



ZCL

Spur Gears

Technopolymer, pressure angle 20°
Module: 0.5 - 1.0 - 1.5 - 2.0 - 2.5 - 3.0



NSF

Lead screw nuts

Trapezoidal thread,
technopolymer
Diameters:
42 to 62 mm



NSL

Lead screw shafts for NSF

Trapezoidal thread, steel or stainless steel
Dimensions:
TR 10x2 to TR 30x6 mm



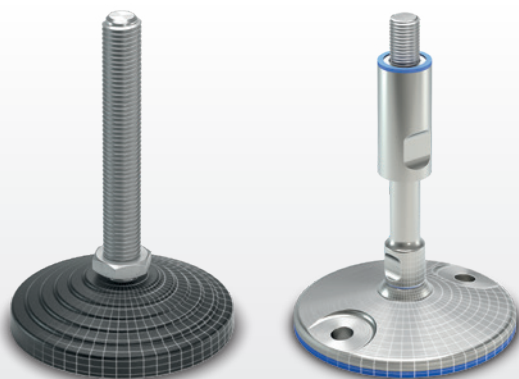
ZGD

Toothed joints

Technopolymer
Diameters:
20 to 27 mm



11 | LEVELLING ELEMENTS



Levelling elements | Bearing end caps

A wide range of levelling elements with technopolymer or metal base, also for ground mounting, with or without no-slip disk and in different shapes and diameters. Threaded articulated stems are available in zinc-plated steel or AISI stainless steel in different sizes. Connecting clamps and support guides complete this range.

Full range available on elesa-ganter.com

LX

Levelling elements, fixed stem

Technopolymer base, steel stem
Bases Ø: 25 to 60 mm
Threadings: M6 to M16



LS.A

Levelling feet

Technopolymer base, steel stem
Bases Ø: 25 to 50 mm
Threadings: M8 to M16



GN 343.6

Stainless Steel Levelling Feet

with Threaded Stud
Diameters: 25 to 60 mm, M6 to M24



LV.A

Levelling feet

Technopolymer base, steel stem
Bases Ø: 60 to 125 mm
Threadings: M8 to M24



LV.F

Levelling elements for ground mounting

Technopolymer base, steel stem
Bases Ø: 80 to 125 mm
Threadings: M8 to M24



GN 20

Stainless Steel Levelling Feet

Hygienic Design, with and without Mounting Holes
Diameters: 80 to 120 mm, M12 to M24



GN 23

Stainless Steel Levelling Feet

with Turned Base Plate, with Mounting Holes
Diameters: 80 to 120 mm, M8 to M30



GN 42

Leveling Feet

Steel, Zinc Plated, with Fixing Lug, Drop Shape
Diameters: 50 to 80 mm, M8 to M24



GN 36

Machine Feet

without Central Fastening Hole
Diameters: 80 to 200 mm, M20 to M42



GN 355

Leveling Elements

Steel / Stainless Steel
Diameters: M12 to M36



NDX.Q - NDX.T

Square end-caps for tubes

Technopolymer
Threadings: M8 to M24



NIL

Ribbed tube end plugs

Technopolymer
Dimensions: 10 to 150 mm



NCT

Protective caps for tubes

Technopolymer
Diameters: 4 to 114.3 mm



NCD

Protection covers for nuts and bolts

Technopolymer
Internal diameters: 6.9 to 45.8 mm

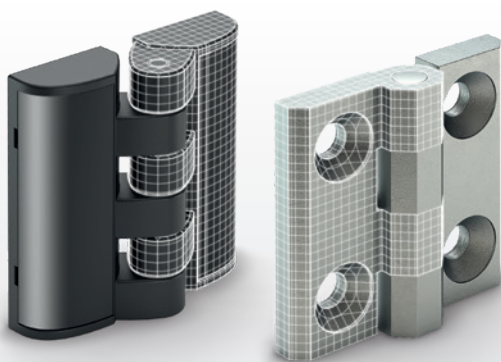


PPR

Support clamp for panels and electro-welded mesh

Mounting of the panel without drilling
Installation on square profiles of 25-30 mm





Hinges | Hinges for thin frames | Adjustable hinges |
Hinges with adjustable friction | Hinges with indexing
function | Spring hinges | Lift-off hinges |
Hinges with electrical safety switch |
Hinges, concealed

Hinges suitable for diverse applications, thanks to the availability of different types of assembly, rotation angles, load resistance and integrated safety switch. The Eles+Ganter range features also hinges in SUPER-Technopolymer or stainless steel ensuring high corrosion resistance.

Full range available on elesa-ganter.com

CFA.

Hinges

Technopolymer
Rotation angle: max
215°
Dimensions:
40 to 97 mm



CFAX.

Hinges

Technopolymer rotating
pin
Rotation angle: max
215°
Dimensions:
40 to 65 mm



CFT.

Hinges with screw- covers

Technopolymer
Rotation angle: max
200°
Dimensions:
40 to 65 mm



CFTX.

Hinges

Technopolymer
Rotation angle: max
200°
Dimensions:
40 to 65 mm



CFM.

Hinges

SUPER-technopolymer
Dimensions:
40 to 60 mm



CFM-TR

Hinges

SUPER-Technopolymer
Dimensions:
40 to 60 mm



GN 237

Hinges

Zinc Die Casting /
Stainless Steel /
Aluminum
Dimensions:
30 to 60 mm



CFJ.

Tamperproof hinges

Technopolymer
Rotation angle: max
275°
Dimension: 50 mm



GN 136

Sheet Metal Hinges

Stainless Steel / Steel,
Square or Vertically
Elongated
Dimensions:
30 to 60 mm



GN 136-extended

Sheet Metal Hinges

Steel / Stainless Steel,
Horizontally Elongated
Dimensions:
45 to 120 mm



GN 1364

Stainless Steel Sheet Metal Hinges

Pointed
Dimensions:
70 to 140 mm



GN 138

Hinges

Zinc Die Casting
Dimensions:
40 to 80 mm



CFG.

Hinges for profiles

Technopolymer
Rotation angle: max
280°
Dimension: 36 mm



GN 161

Hinges

Accessory for Profile
Systems / Zinc Die
Casting
Dimensions:
57 to 80 mm



GN 129

Hinges

Consisting of Two or
Three Parts / Steel
Dimensions:
25.6 to 49 mm



CFDA

Hinges for narrow jamb

SUPER-technopolymer
Dimensions:
72 - 100 mm



CMDX-AL

Hinge for thin frames

Aluminium
Rotation angle: max
185°
Dimensions:
50 to 90 mm



GN 238

Hinges

Adjustable / with Cover /
Zinc Die Casting
Dimensions:
42 to 60 mm



CFR.

Hinge with adjusting inserts

SUPER-technopolymer
Rotation angle: max
260°
Dimension: 60 mm



CFA-ERS

Hinges with friction brake

Technopolymer
Rotation angle: max
215°
Dimensions:
49.5 to 96.5 mm



CFU.

Hinges with adjustable friction

Technopolymer
Dimensions:
40 - 60 mm



GN 437

Hinges

Zinc Die Casting /
Stainless Steel,
with Adjustable Friction
Dimensions:
40 to 60 mm



CFP.

Detent hinges

screw-covers, technopolymer
Rotation angle: max
195°
Dimension: 50 mm



CFV.

Detent hinges

Technopolymer
Rotation angle: max
210°
Dimension: 65 mm



CFVT.

Detent hinges

Technopolymer
Dimensions: 53 mm



CFMR.

Spring hinges

for automatic return,
SUPER-technopolymer
Dimensions: 67 mm



CFN.

In line lift-off hinges

Technopolymer
Dimension: 64 mm



GN 128

Hinges

Detachable, for Welding /
Steel
Dimensions:
40 to 200 mm



CFMY

Lift-off hinges

SUPER-technopolymer
Rotation angle: max
270°
Dimensions:
40 to 60 mm



GN 337

Hinges

Detachable /
Zinc Die Casting /
Stainless Steel
Dimensions:
40 to 60 mm



CFSW.

Hinges with built-in safety switch

SUPER-technopolymer
Dimension: 110 mm



CFMW.

Hinges

SUPER-technopolymer
Rotation angle: max
180°
Dimensions:
70 to 110 mm



CFSQ

Hinges with built-in safety switch

SUPER-technopolymer
Rotation angle: max
190°
Dimension: 53 mm



GN 139.1

Hinges with Safety Switch

Zinc Die Casting
Length: 49 to 79 mm



GN 330

Cables with Connector Coupling

Length: 2 to 10 m



GN 7237

Stainless Steel Multiple-Joint Hinges

Concealed,
Opening Angle 180°





Latches with handle | Latches with clamping function | Latches with key | Snap locks | Latches with indexing function | Edge protection profiles

Different types of latches with knob or key made in metal, stainless steel or technopolymer to lock control cabinets, panels or machine doors.

Full range available on elesa-ganter.com

GN 115-NL

Latches

Zinc Die Casting / Stainless Steel, with Operating Elements, not Lockable
Latch distance:
4 to 50 mm



CMT.AE-VO

Lever latches with fold-away knob

Technopolymer
Rotation: 90°
Dimensions:
18 to 32 mm



VCK.

Cam latches with knob

Steel or stainless steel cam
Knob diameters:
50 to 70 mm



GN 516.1

Rotary Clamping Latches

with Continuously Adjustable Latch Distance A
Latch distance:
1 to 41 mm



GN 1150

Stainless Steel Latches

Operating Side in Hygienic Design (Front Hygiene) /
Operating and Latch Arm Side in Hygienic Design (Full Hygiene)



CQ.SST

Lever latches

with recessed key, stainless steel
Rotation: 90°
Dimension:
18 to 24 mm



CS.

Lever latches with key

Lock, zinc alloy
Dimensions:
13 to 30 mm



CSMT-A

Lever latches with T-Handle

Operation with key, anti-rotation device, technopolymer
Rotation: 90° right
Handle dimension: 80 mm



CSMHW

Latches with push handle

Zinc alloy
Adjusting distance:
13 to 75 mm
Dimension: 128 mm



GN 115.10

Latches with Gripping Tray

Operation with Key, Lockable
Latch distance:
4 to 50 mm



PR-CH

Flush pull handles with lever latch

Snap-in assembly, technopolymer
Dimension: 117 mm



BPS

Ball-shaped door lock

Technopolymer
Assembly by means of a self-tapping screw or cylindrical-head screw with hexagon socket
Opening release strength is = 30 N.



BMS

Snap door lock

Technopolymer
Standard executions: snap lock and unlock (BMS), or snap lock and lever for manual release (BMS.L), maximum load at breakage of the door lock is = 2500 N



GN 702

Stop Locks

with 4 Indexing Positions (4 x 90°)
Length:
40 to 55 mm



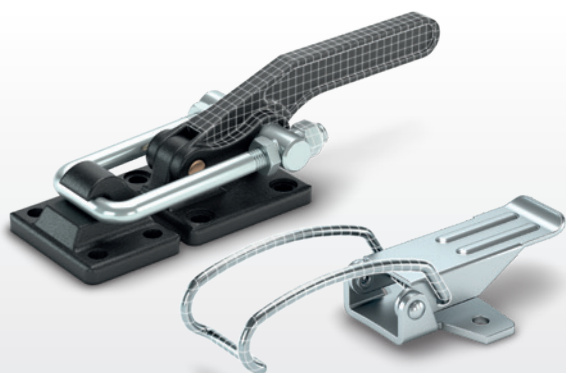
GN 2180

Edge Protection Seal Profiles

Material NBR / EPDM (UL-certified)
Dimensions:
20 to 50 mm



14 | TOGGLE, POWER AND HOOK CLAMPS



Toggle clamps | Power clamps | Hook clamps

Toggle clamps, power clamps, pneumatic fastening clamps, hook clamps, toggle latches and pull clamps lock components quickly and safely.

Full range available on elesa-ganter.com

GN 810

Toggle Clamps

Steel / Stainless Steel,
Operating Lever Vertical, with
Horizontal Mounting Base
Holding force:
750 to 4500 N



GN 810.3

Toggle Clamps

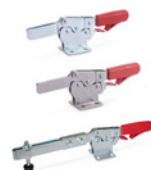
Steel / Stainless Steel,
Operating Lever Vertical,
with Lock Mechanism, with
Horizontal Mounting Base
Holding force:
1050 to 2000 N



GN 820.3

Toggle Clamps

Steel / Stainless Steel,
Operating Lever Horizontal,
with Lock Mechanism, with
Horizontal Mounting Base
Holding force:
900 to 3200 N



GN 844

Push-Pull Type Toggle Clamps

for Push-Pull Clamping
Holding force:
900 to 4500 N



GN 850

Latch Type Toggle Clamps

for Pulling Action
Holding force:
2000 to 4000 N



GN 851.3

Latch Type Toggle Clamps

Steel / Stainless Steel, with
Safety Hook, with Pulling Action
Holding force:
1600 to 7000 N



GN 852.1

Latch Type Toggle Clamps

Heavy Duty Type
Holding force: 12000 N



GN 858

Latch Type Toggle Clamps

with Locking
Mechanism
Holding force: 15000 N



GN 708.1

Clamping Screws

Steel / Stainless Steel,
with Rubber Thrust Pad
Dimensions: M4 to M12
Length: 23 to 130 mm



GN 910

Toggle Clamps

Operating Lever Vertical,
with Horizontal
Mounting Base, Heavy
Duty Type „Longlife“
Holding force:
2200 to 15400 N



GN 861

Toggle Clamps

Pneumatic, Heavy Duty
Holding force:
10000 to 20000 N



GN 864

Power Clamps

Pneumatic
Holding force:
7030 to 22666 N
Piston size: 20 to 50



GN 8330

Toggle Latches

Steel / Stainless Steel
Holding force:
100 to 1200 N



TLA.

Hook clamps

Steel or stainless steel
Dimensions:
102 to 193.5 mm



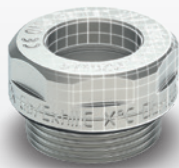
TLL.

Adjustable hook clamps

Steel
Dimension: 125.5 mm



Toggle, power and hook clamps



Plugs | Breather caps | Level indicators | Column level indicators | Flexible coolant hoses | Seals

The range of accessories for hydraulic systems includes plugs, breather caps and oil sight glasses, also with health and safety features according to ATEX European Directive 2014/34/EU (explosive atmospheres) for equipment in Group II, category 2GD. Level indicators, column level indicators with visual and electrical temperature and level controls, visual flow indicators, flexible coolant hoses and seals. A wide range of components for hydraulic systems.

Full range available on elesa-ganter.com

TN. - TNR.

Plugs

Technopolymer up to 100°C
Metric threads: M10 - M12
- M14 - M16 - M18 - M20 - M22
- M25 - M26 - M35 - M40
GAS threads: 1/8 - 1/4 -
3/8 - 1/2 - 3/4 - 1 - 1 1/4 - 1 1/2



TCD. - TCR.

Oil fill plugs

Technopolymer up to 100°C
Metric threads: M10 - M12
- M14 - M16 - M18 - M20 -
M22 - M25 - M26 - M35 - M40
GAS threads: 1/8 - 1/4 -
3/8 - 1/2 - 3/4 - 1 - 1 1/4 - 1 1/2



TSD. - TSR.

Oil drain plugs

Technopolymer up to 100°C
Metric threads: M10 - M12
- M14 - M16 - M18 - M20 -
M22 - M25 - M26 - M35 - M40
GAS threads: 1/8 - 1/4 -
3/8 - 1/2 - 3/4 - 1 - 1 1/4 - 1 1/2



GN 741

Threaded Plugs

Aluminum, Resistant
up to 100 °C
Threadings: M14 x 1.5
to M42 x 1.5, G1/4 to
G1 1/2



TMB.

Magnetic plugs

Aluminium up to 180°C
Metric threads: M14 - M16
- M20 - M26 - M33 - M40
- M42
GAS threads: 1/4 - 3/8 -
1/2 - 3/4 - 1 - 1 1/4 - 1 1/2



TPC.

Oil fill plugs

for push-fit, technopoly-
mer up to 100°C
Diameters: 20 - 26 mm



T.440

Plugs

Technopolymer up to
100°C
GAS threads: 1/4
- 3/8 - 1/2 - 3/4 - 1 - 1
1/4 - 1 1/2



GN 7490

Welding Sockets

Steel / Stainless Steel,
with and without Collar
Threadings: G1/8 to G3



GN 442

Threaded Plugs

Aluminum, with Wing
Knob, up to 200°C
Threadings: M16 x 1.5 to
M26 x 1.5, G3/8 to G1



GN 880

Oil Drain Valves

Brass, 120°C
Threadings:
M14 x 1.5 to M30 x 1.5,
G1/4 to G1



GN 880.1

Connector Pieces

for Oil Drain Valves
GN 880 / with or
without Drain Hose
Dimensions:
M22 x 1.5 to M26 x 1.5



GN 881

Breather Valves

Brass
Threadings: M12 x 1.5 to
M30 x 1.5, G1/4 to G1



SFP. - SFP-EX

Breather caps

with splash guard, techno-
polymer up to 100°C
GAS threads: 1/4 - 3/8 -
1/2 - 3/4 - 1 - 1 1/4 - 1 1/2 - 2



SFP+a

Breather caps

with splash guard and flat
dipstick, technopolymer up
to 100°C
GAS threads: 1/4 - 3/8 -
1/2 - 3/4 - 1 - 1 1/4 - 1 1/2 - 2



SFV.

Valve breather caps

Technopolymer
Metric threads: M16 -
M18 - M20 - M22
GAS threads: 1/4 -
3/8 - 1/2 - 3/4 - 1



SFW.

Pressurised breather caps

with double valve,
technopolymer up to
100°C
GAS threadings: 3/4 - 1
1/4 - 2



HGFT.

Oil level sight glasses

Technopolymer up to
100°C
GAS threadings: 3/8 -
1/2 - 3/4 - 1 - 1 1/4 - 2



GN 743.6

ATEX-Sight Glasses

Aluminum
Threadings:
M16 x 1.5 to M27 x 2,
G3/8 to G3/4



HGFT-HT-PR

Oil level sight glasses

with prismatic window,
high temperatures,
technopolymer up to
140°C
GAS threadings: 1/2 -
3/4 - 1



GN 7403

Breather Strainers

Stainless Steel Mesh
Threadings:
M20 x 1.5 to M33 x 1.5,
G1/2 to G1



GN 7404

Two-Way Breathable Membranes

Stainless Steel / Aluminum,
Oil Repellent (Oleophobic) /
Water Repellent (Hydrophobic)
Threadings: M20 x 1.5 to M33 x
1.5, G1/2 to G1



GN 7405

Stainless Steel Strainer Fittings

Threadings:
100 to 500 µm,
G3/8 to G3/4



HFTX.

Oil level sight glass

Technopolymer, Metric
threadings: M16 - M20 - M25
- M26 - M27 - M30 - M33 -
M35 - M40 GAS threadings:
1/4 - 3/8 - 1/2 - 3/4 - 1 - 1 1/4



GN 537

Oil Sight Glasses

Aluminum / Perspex,
without Thread
Diameters: 20 to 58 mm



HCFE.

Oil level sight glasses

Transparent technopolymer
up to 100°C
GAS threadings: 3/8 -
1/2 - 3/4 - 1 - 1 1/4



HVF.

Visual flow indicators

Technopolymer ends
GAS threadings: 1/4 -
3/8 - 1/2 - 3/4 - 1



HCZ.

Oil level indicators

Transparent technopolymer
Max. continuous working
temp.: 90°C
Assembly centre distances:
76 to 254 mm



HCX.

Oil level indicators

Transparent technopolymer
Max. continuous working
temp.: 90°C
Assembly centre distances:
76 to 254 mm



HGX-PT

Level indicators with protection frame

SUPER-Technopolymer and
transparent technopolymer
Max. continuous working
temp.: 90°C Assembly centre
distances: 76 to 254 mm



HCK.

Oil level indicators

suitable for oil and
glycol-based solutions
Max. continuous working
temp.: 100°C or 130°C
Assembly centre distances:
76 to 508 mm



SLCK

Kit for the electric control of a fluid level

for HCK. and HCK-GL
column level indicators
Max. continuous
working temp.: 80°C or
120°C



HCV-E

Oil electrical level indicators

with MIN level electrical
sensor
Max. continuous working
temp.: 90°C
Assembly centre distances:
127 to 254 mm



HCV-E-STL

Oil electrical level indicators

with MIN level electrical sensor
and temperature electrical
probe
Max. continuous working
temp.: 90°C
Assembly centre distances:
127 to 254 mm



HCV-ST-AX

Oil electrical level indicators

with MAX temperature
electrical sensor
Max. continuous working
temp.: 90°C
Assembly centre distances:
127 mm



HCK-E - HCK-E-ST - HCK-E-STL

Column level indicators

with level and temperature
sensor
Max. continuous working
temp.: 100°C or 130°C
Assembly centre distances:
127 to 508 mm



FH.1/4

Flexible coolant hoses

Kit with tubes with
a diameter of 1/4",
technopolymer



16 | TUBE CLAMP CONNECTORS



Tube clamp connectors | Clamp mountings |
Tube connectors | Angle brackets

Tube clamp connectors for square / round tubes made in steel, aluminum, stainless steel and technopolymer, with or without base or flange, fixed, swivel, T-shape and one or two ways. Technopolymer supports are available also with colored caps and no-slip tube.

Full range available on elesa-ganter.com

GN 131

Two-Way Connector Clamps

Aluminum /
Stainless Steel
Bores: B10 to B18



TCC-CR

Two-way connecting clamps

Technopolymer
Bores: 18 - 30 mm



GN 141

Flanged Two-Way Connector Clamps

Aluminum, Multi Part
Assembly
Bores: B20 to B50



GN 146

Flanged Connector Clamps

Aluminum, with 4
Retaining Bores
Bores: B20 to B60



GN 162.3

Base Plate Connector Clamps

Aluminum / Stainless
Steel, with 2 Mounting
Holes
Bores: B10 to B18



GN 192

T-Angle Connector Clamps

Aluminum
Bores: B20 to B60



TCC-SL

Connecting clamps with sleeve

Technopolymer
Bores: 18 - 30 mm



TCC-TP

Clamps for hinged joints

Technopolymer
Bores: 30 mm



TCC-TP-PB

Hinged joint with mounting base and clamp

Technopolymer
Bores: 30 mm



GN 285

Swivel Clamp Connector Joints

Aluminum
Bores: B12 to B18



GN 990

Construction Tubes

Aluminum / Stainless Steel,
for Tube Clamp Connectors
Round or square diameters:
10 to 60 mm or V10 to V50



MSX.

Connecting clamps

Technopolymer
Dimension: 56 mm



MSR.

Connecting clamps

Technopolymer and
aluminium
Dimension: 60 mm



GN 474

Two-Way Mounting Clamps

Aluminum
Bores: B8 to B20



STC

Square tube connectors

Technopolymer and steel
Monodimensional two-way,
bidimensional two, three or
four-way, tridimensional three,
four, five or six-way connector



17 | CASTORS AND WHEELS



Polyurethane wheels | Technopolymer wheels |
Rubber wheels | Duroplast wheels

Castors and wheels suitable for manual or mechanical handling on different grounds and floors. Castors are supplied with different types of wheels and metal support. Polyurethane, technopolymer, rubber and Duroplast wheels are combined to fixed or turning plate bracket, with or without brakes.

Full range available on elesa-ganter.com

RE.FF-N

Castors with steel bracket

Injected polyurethane coating
Wheel Ø: 80 to 150 mm



1200 - 3000 N

RE.C6-G

Twin castors for the general public with steel bracket

Injected polyurethane coating
Wheel Ø: 50 mm



1400 N

RE.F5-N

Castors with steel bracket

Mould-on polyurethane coating
Wheel Ø: 80 to 200 mm



2000 - 3000 N

RE.F5-N-ESD

Castors with steel bracket

ESD cast polyurethane coating
Wheel Ø: 80 to 200 mm



1700 - 3000 N

RE.F4-WH - RE.F4-WEH

Castors with bracket for heavy loads

Mould-on polyurethane coating
Wheel Ø: 125 to 300 mm



5500 - 23000 N

RE.G5

Mould-on polyurethane rollers

Steel centre body
Wheel Ø: 80 to 85 mm



7000 - 10000 N

RE.F2-H

Castors with bracket for medium-heavy loads

Soft polyurethane coating
Wheel Ø: 100 to 200 mm



3000 - 7000 N

RE.F8-N

Castors with bracket

Technopolymer monolithic wheels
Wheel Ø: 65 to 200 mm



INOX 1200 - 3000 N

RE.F7-N-HT

Castors

Duroplast monolithic wheels, high temperatures
Wheel Ø: 80 to 100 mm



INOX 1500 - 2000 N

RE.G1-N

Castors with steel bracket

Thermoplastic rubber coating
Wheel Ø: 80 to 150 mm



INOX 700 - 1800 N

RE.E2-N

Castors with steel bracket

Vulcanised rubber coating
Wheel Ø: 80 to 200 mm



650 - 2250 N

RE.E3-N

Castors with steel bracket

Vulcanised rubber coating
Wheel Ø: 80 to 200 mm



650 - 2300 N

RE.G2-H

Castors with bracket for medium-heavy loads

Elastic rubber coating
Wheel Ø: 100 to 200 mm



1800 - 5000 N

RE.C7

Castors for the general public with steel bracket

Vulcanised rubber coating
Wheel Ø: 40 to 80 mm



300 - 550 N

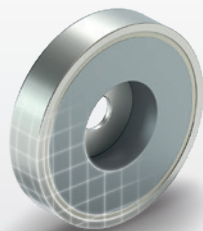
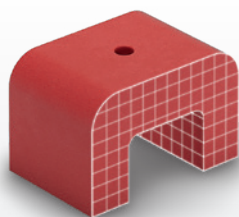
RE.C7-G

Twin castors for the general public with steel bracket

Vulcanised rubber coating
Wheel Ø: 50 to 75 mm



600 - 800 N



Disc-shaped | Rod-shaped | U-Magnets |
Raw magnets

Elesa+Ganter offers a wide range of retaining magnets such as disc-shaped and rod-shaped magnets, U-magnets and raw magnets, to solve tasks easier, more efficient, and more reliable.

Full range available on elesa-ganter.com

GN 50.6

Retaining Magnets

Disk-Shaped,
with Hook / with Eyelet
Diameters:
16 to 80 mm



GN 50.1

Retaining Magnets

Disk-Shaped,
without Thread
Diameters:
6 to 125 mm



GN 50.3

Retaining Magnets

Disk-Shaped, with
Threaded Stud
Diameters: 6 to 80 mm



GN 50.4

Retaining Magnets

Disk-Shaped, with Bore
or Internal Thread
Diameters:
10 to 100 mm



GN 51.6

Retaining Magnets

Disk-Shaped, with 2
Internal Thread,
with Rubber Jacket
Diameters:
43 to 57 mm



GN 51.7

Magnets

with Ball Knob / with
Key Ring, with Rubber
Jacket
Diameters:
22 to 43 mm



GN 58

Pot Magnets

with Countersunk Bore
Diameters:
19 to 38 mm



GN 52.2

Retaining Magnets

Rod-Shaped,
with Internal Thread
Diameters:
6 to 63 mm



GN 52.4

Retaining Magnets

Rod-Shaped,
with Threaded Stud
Diameters:
6 to 63 mm



GN 52.5

Stainless Steel Retaining Magnets

Rod-Shaped, with
Gummed Magnetic Surface
Diameters:
10 to 25 mm



GN 251.6

Setting Bolts

with Retaining Magnet
Diameters:
12 to 80 mm



GN 60

Button-Type Magnets

with Bore
Diameters:
13 to 32 mm



GN 55.1

Raw Magnets

Disk-Shaped, with Bore
or Countersunk
Diameters:
6 to 102 mm



GN 55.4

Raw Magnets

Block-Shaped
Diameters:
7.5 to 33 mm



GN 70

Holding Disks

Steel / Stainless Steel,
for Retaining Magnets
Diameters:
12 to 64 mm



19 CONVEYOR COMPONENTS



Supports and guides | Transfer units

Conveyor components allow the creation of support structures in many different sectors e.g industrial for bottling, packaging and material handling. Rail supports and clamps, support heads, bipods, tripods, bearings and connection joints, lateral and central roller guides, as well as linear and shaped lateral guides made of technopolymer zinc plated, steel or stainless steel. Also available ball transfer units, modular roller tracks and guide rollers.

Full range available on elesa-ganter.com

BAS3

Tripod supports

Technopolymer
Tube housing holes Ø:
42 to 60 mm - 45x45
mm



SPR.V

Guide rail brackets

for linear and angular
positioning,
technopolymer
Pin Ø:
12 to 16 mm



GLA-1

Roller side guides

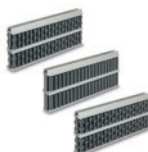
Technopolymer,
aluminium,
stainless steel
Dimension: 3000 mm



GCA-4

Roller central guides

Technopolymer,
aluminium,
stainless steel
Dimension: 3000 mm



GLB-1

Articulated side guides

Technopolymer,
stainless steel
Dimension: 375 mm



GLP-HT

Linear guide rail, high temperature

Flat profile,
technopolymer,
stainless steel
Dimension: 3000 mm



GLS

Linear guide rail

Shaped profile,
technopolymer,
stainless steel
Dimension: 3000 mm



UCF

Self-aligning brackets

square flanged,
technopolymer
Shaft diameters:
25 to 30 mm



GN 509

Ball Transfer Units

Stainless Steel / Steel
Housing
Dimensions:
15 to 30 mm



GN 509.3

Spring Rings

Retainers for Ball
Transfer Units GN 509 /
GN 509.1



GN 509.4

Ball Transfer Units

Heavy Duty
Steel-Housing,
without Collar



UTR

Roller transfer units

Technopolymer
Diameters:
24 - 36 mm



RLT-U

Roller elements for ELEROLL roller tracks

Technopolymer and
polyurethane
Dimension: 270 mm



elesa:roll®

RLS-U

Ball elements for ELEROLL roller tracks

Technopolymer
Dimension: 270 mm



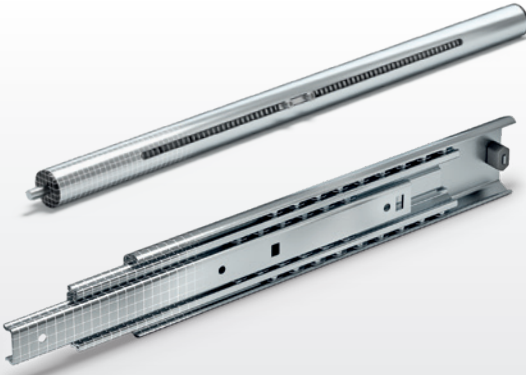
elesa:roll®

GN 753

Guide Rollers

Plastic
Diameters:
19 to 26 mm





Telescopic slides | Linear slides for smooth linear movement | Linear guide rail systems | Linear actuators and linear actuators connectors | Adjustable slide units

The range of linear motion components includes telescopic slides, linear slides, linear guide rail systems, linear actuators and adjustable slide units. All components available in several materials: Steel, stainless steel, aluminum and zinc plated.

Full range available on elesa-ganter.com

GN 1400

Telescopic Slides

with Partial Extension,
Load Capacity
up to 280 N
Length: 300 to 500 mm



GN 1412

Telescopic Slides

with Full Extension and
Self-Retracting Mechanism,
Load Capacity
up to 430 N
Length: 300 to 700 mm



GN 1418

Telescopic Slides

with Full Extension and "Push
to Open" - Mechanism,
Load Capacity up to 430 N
Dimensions:
350 to 650 mm



GN 2402

Linear Slides

with Inside Traversal
Distance
Dimensions:
28 to 43 mm



GN 2410

Telescopic Linear Slides

with Runners Connected
in Dual Configuration
Dimensions:
210 to 966 mm



GN 1490

Linear Guide Rail Systems

Steel / Stainless Steel,
with Inside Traversal
Distance
Length: 394 to 1434 mm



GN 2422

Cam Roller Linear Guide Rails

for Linear Guide Rail
Systems, C-Profile
Dimensions:
18 to 43 mm



GN 2494

Stainless Steel Cam Roller Carriages

for Stainless Steel Cam
Roller Linear Guide Rails
GN 2492
Dimensions: 30 to 45 mm



GN 2496

Stainless Steel Cam Rollers

for Stainless Steel Cam
Roller Linear Guide Rails
GN 2492
Dimensions: 30 to 45 mm



GN 291

Linear Actuators

Steel / Stainless Steel,
with Right or Left Hand
Thread
Standard travel lengths:
65 to 720 mm



GN 132.1

Two-Way Linear Actuator Connectors

for One Axis System,
Aluminum
Bores: B30 to B60 mm



GN 132.25

Two-Way Linear Actuator Connectors

for Two-Axis System,
Stainless Steel
Bores: G30 to G50 mm



GN 134.2

Two-Way Linear Actuator Connectors

Aluminum, Multi Part
Assembly, for Two-Axis
System
Bores: 30 to 50 mm



GN 491

Double Tube Linear Actuators

with Left or Right Hand
Thread, Single Slider
Length: 100 to 500 mm

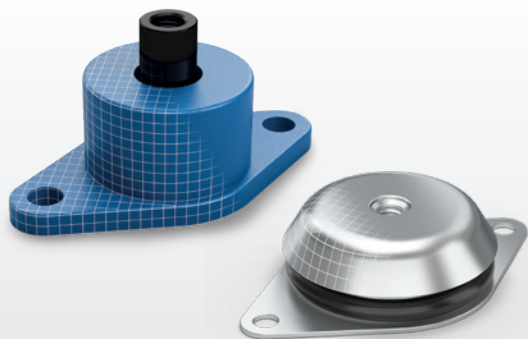


GN 900

Adjustable Slide Units

Dimensions:
50 to 260 mm





Rubber buffers | Anti-vibration mounts | Spring mounts and wire rope isolators

Vibration mounts designed to dampen vibrations that can cause bad functioning, impact or noise generated by moving parts or vibrating masses on unbalanced machines. These vibration-damping elements are discreet and absorb shocks and sounds to help create a less disrupting environment. The wide selection includes rubber buffers, anti-vibration mounts, spring mounts and wire rope isolators.

Full range available on elesa-ganter.com

DVA.1 - DVA.2 - DVA.3

Rubber buffers

Rubber and steel or stainless steel
Diameters:
8 to 125 mm



DVA.6 - DVA.7

Rubber buffers

Rubber and steel or stainless steel
Diameters:
10 to 75 mm



DVB.6 - DVB.7

Rubber buffers

Rubber and steel or stainless steel
Diameters:
20 to 60 mm



DVF.6 - DVF.7

Rubber buffers

Silicone rubber and stainless steel
Diameters:
20 to 60 mm



DVC.1 - DVC.2 - DVC.3

Rubber buffers

Rubber and steel or stainless steel
Diameters:
10 to 95 mm



GN 342.2

Leveling Feet

with Vibration Damping,
with Threaded Stud
Diameters:
32 to 60 mm



LW.A

Vibration-damping levelling feet

Steel base and stem
Bases Ø: 80 to 200 mm
Threadings: M12 to M20



GN 148

Leveling Feet
with Vibration
Damping Element
Dimensions:
60 to 126 mm



DVE

Rubber buffers mounts with flange

Rubber and steel or stainless steel
Dimensions:
64 to 310 mm



DVG

Rubber buffers mounts with flange

for wall or ceiling mounting, rubber and steel
Dimension: 114



DVI

Rubber buffers mounts with flange

for wall mounting, rubber and steel
Dimension: 114



AVG

Flange vibration dampers

double acting, rubber, aluminium and steel
Dimension: 80 mm



AVF

Metal Cushions

Stainless steel
Dimensions:
42 to 225 mm



AVC

Wire rope vibration damper

Stainless steel
Dimensions:
53 to 135 mm



AVM

Spring vibration dampers

Rubber and steel
Dimension: 55 mm



COPYRIGHT © 2023

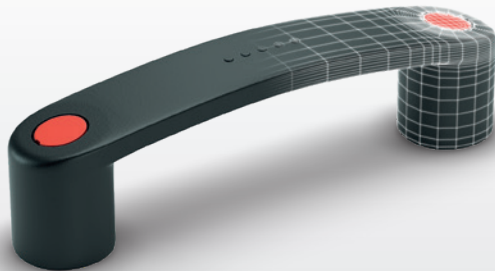
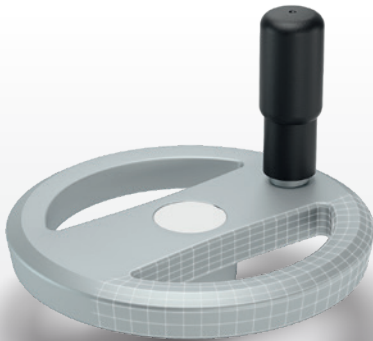
Elesa S.p.A. and OTTO GANTER GmbH & Co. KG

All rights reserved.

No part of this catalogue can be reproduced in whole

or in part without prior written permission from

Elesa S.p.A. or OTTO GANTER GmbH & Co. KG



ELESA S.p.A.
Via Pompei 29
20900 Monza (MB)
Italy
+39 039 28 11 1
info@elesa.com
elesa.com

OTTO GANTER GmbH & Co. KG
Triberger Straße 3
78120 Furtwangen
Germany
+49 7723 65 07 0
info@ganternorm.com
ganternorm.com