



SHEET-POCKET™

The **SHEET-POCKET™** Telescopic Steel Cover is the most effective solution for shielding the Y-axis (vertical) in horizontal machining centers. It is supplied in a fully enclosed frame that is independent from the machine structure. The self-contained sheet-pocket is easy to install and remove for maintenance or inspection.

- Speeds up to 150 m/min
- Accelerations of 2 g.

The **SHEET-POCKET™** Telescopic Steel Cover can be easily combined with **SURE-SPRING®** roll-up covers.



Reproduction of this page is strictly prohibited.

(Patented)



SHEET-POCKET™ PROSHD

The **SHEET-POCKET™ PROSHD** is a protective shield which in a machine tool separates the working area from the motor while allowing the spindle to move freely.

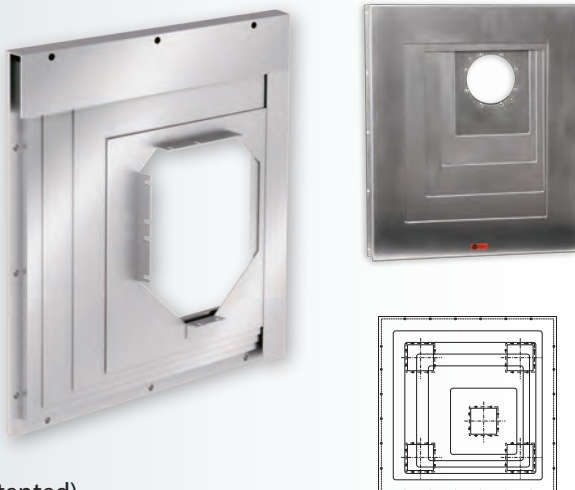


Reproduction of this page is strictly prohibited.

The **Telescopic Steel Covers SQUARE™** and **ROUND SLIDING COVER™** were designed to meet special needs that frequently arise on **SPECIAL** or **TRANSFER** machines and small machining centers.

SQUARE SLIDING COVER™

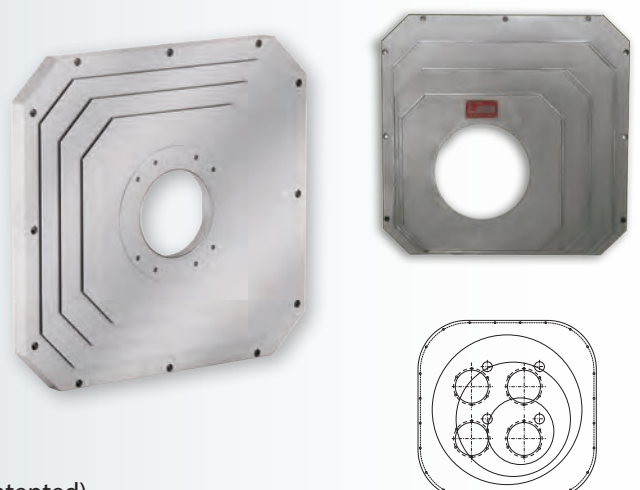
- For dual-axis operation
- High speed
- Compact size
- Easy to install
- Maximum use of available space



(Patented)

ROUND SLIDING COVER™

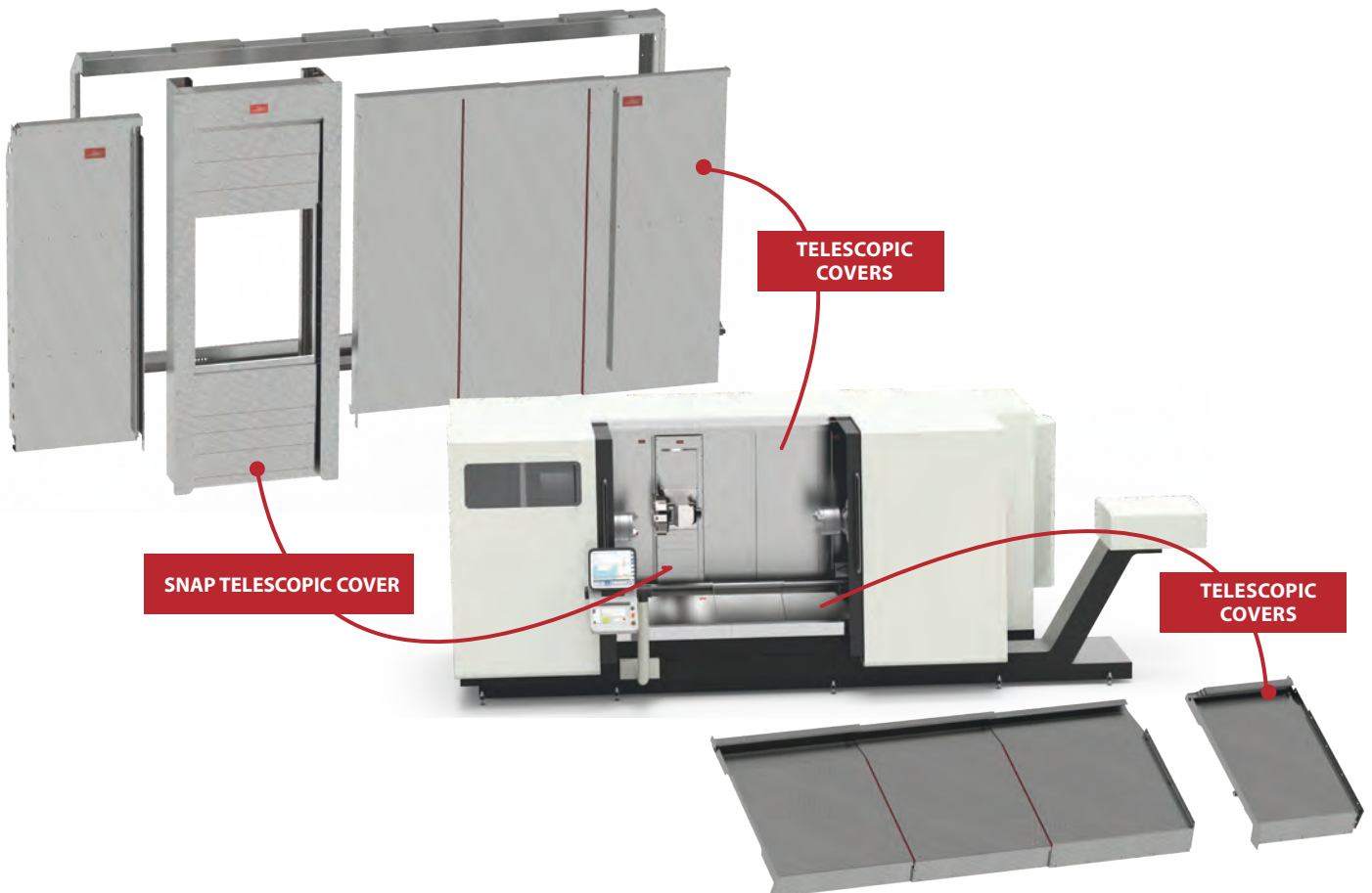
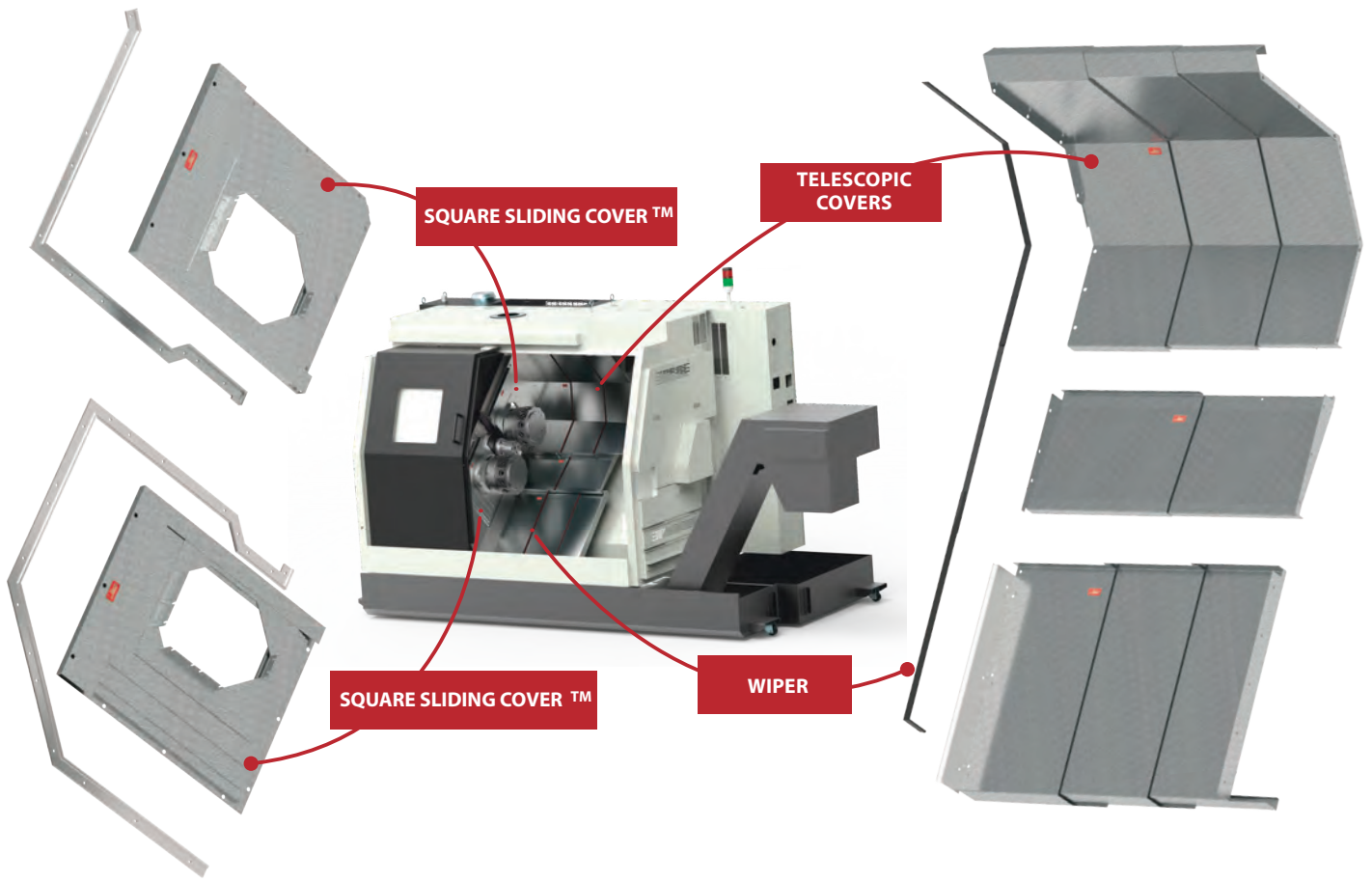
- For dual-axis operation
- High speed
- Compact size
- Easy to install



(Patented)



TELESCOPIC COVERS FOR LATHES



Reproduction of this page is strictly prohibited.



SNAP TELESCOPIC COVER The "EASY-ACCESS" Cover

This innovative cover **can be totally dismantled** and is ideal for protecting frontal and vertical axes in small to medium working centres, transfer machines, lathes and milling borers.



(Patent Pending)

- **MAINTENANCE:** easy access to both the whole cover and machine tool
- **DISASSEMBLY:** the components can be disassembled directly on the machine
- **ASSEMBLY:** manual, as there are no welded parts
- **MATERIAL:** highly resistant steel
- **DIMENSIONS:** up to 1 metre wide and 4.5 metres high
- **SPEED:** up to 150m/min and acceleration up to 2g

Disassembly



The panels which form the **Snap Telescopic Cover** can be detached and reassembled on the machine without removing the head of the milling machine, columns or multi-tool spindles. The external frame base remains fixed on the machine allowing the panels to be remounted without requiring alignment or calibration.