



Focus
Components for
construction vehicles,
equipment and machinery



ELESA+GANTER, the worldwide leader in the design and manufacture of **standard machine elements** in engineering plastics and metal, presents an extensive range of accessories for hydraulic systems and a wide range of components for all manoeuvring, clamping and control operations for **construction vehicles and equipment**.



ELESA+GANTER is a commercial joint-venture between the two world leaders of standard machine elements: Elesa S.p.A (Monza, Milano, Italy) and Otto Ganter GmbH & Co. KG (Furtwangen, Germany). ELESA (founded in 1941) and OTTO GANTER (founded in 1894) have been co-operating for more than 35 years to create market synergies and to develop products which are in line with the market. In 1995 the two companies started to set up a common sales network under the trademark ELESA+GANTER to offer the widest range of standard machine elements with a unique design, a perfect service and with the ability to create special customized solutions in a very short time.

Points of strength

- technological background of the two established mother companies
- innovation in combination with decades of experience
- unique design
- optimised and widest product range of standard machine elements, driven by the market
- worldwide distribution network
- full stock availability with fast delivery times
- customized solutions
- perfect service including technical assistance

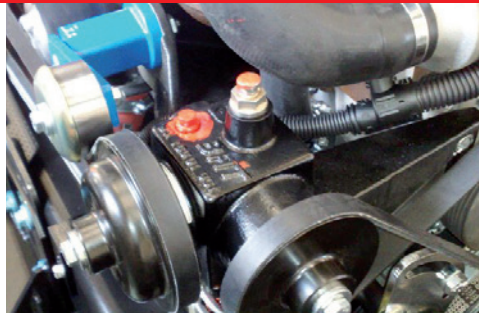


Find out more about ELESA+GANTER standard elements for construction vehicles and equipment in our General Catalogue on www.elesa-ganter.com

ELESA+GANTER presents a wide range of **standard elements in engineering plastics and metal for equipment and machinery for the construction and building industry** which operate in particularly unfavourable conditions and sometimes in explosive atmospheres. High or low temperatures, high pressures, high humidity and contact with different chemical substances are some of the most common conditions of use. Therefore, **reliable components** in functionality, quality and performance are essential and of the utmost importance.



Application of SFP+a filler breather cap with splash guard and dipstick.



Application of GN 883 breather valves.



Application of HCFE oil circulation sight.

SFP+a



Breather caps with splash guard and dipstick

Material technopolymer, NBR packing ring
Max. temp. 100°C/120°C **Diameters** 30 to 70 mm **Threads** G1/4" to G2" M16x1.5 to M22x1.5 Execution SFP.EX compliant with European Directive ATEX 94/9/EC.



GN 883

Breather valves

Material brass, breather cap plastic polyamide based (PA) technopolymer, Resistant to solvents, oils, greases and other chemicals agents, **Temperature resistance** from -30°C to 100°C, **Threads** From M10x1 to M16x1,5, G1/4 to G 3/4



HCFE.



Oil circulation sights

Material transparent technopolymer, NBR packing ring **Max. temperature** 110°C
Threads G3/8" to G1 1/4" Execution HCFE-EX compliant with European Directive ATEX 94/9/EC.



You can also find:

T.440
Plugs



GN 749
Plugs with hexagon for high pressures



GN 441
Plugs



SFV.
Valve breather caps



GN 882
Breather filters



HGFT-PR
Oil level indicators with prismatic window



HFTX
Oil level indicators



Accessories for hydraulic systems

The full range of ELESA+GANter accessories for hydraulic systems is available **in a variety of production materials**: plastic, aluminium, brass, zinc-plated steel or stainless steel with NBR synthetic rubber, FPM or FKM (type Viton*) to withstand different liquid/oil temperatures.

Plugs, filler breather caps and oil level indicators are available with **different types of threads**: ISO-Metric, GAS-BSP and UNC-UNF or NPT for the American market to meet the demands.

* Registered Trademark by DuPont Dow Elastomers

21 different types of column level indicators with or without thermometer and protection frame. Also available with electrical sensor or probe for MAX temperature and MIN level. The body of the indicator, entirely in transparent technopolymer, is assembled using ultrasonic welding to guarantee a perfect seal ensured by 100% electronic control during production. A progressive serial number for the traceability of every single indicator is laser engraved on its rear side. Total compatibility with commonly used chemicals, hot water and alcohol together with the utmost resistance to shocks represent additional features that make ELESA+GANter range unique.

Application of GN 743 oil level indicator



Application of GN 880 oil drain valves

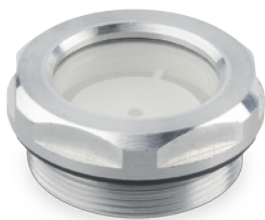


Application of HCZ-P with SUPER-Technopolymer protection frame

GN 743

Oil level indicators

Material aluminium, brass or stainless steel, float-glass or ESG-glass window **Max. temperature** 100°C or 180°C **Threads** From M14x1,5 to M42x1,5, G1/4" to G1 1/2"



GN 880

Oil drain valves for draining non-pressurised oil, as well as conditionally for vacuum drainage

Material valve body out of brass, breather cap plastic polyamide based (PA) technopolymer, Resistant to solvents, oils, greases and other chemical agents, **Temperature resistance** from -30°C to 100°C, **Threads** From M10x1 to M16x1,5, G1/4 to G 3/4



HCZ-P

Column level indicators with SUPER-Technopolymer protection frame

Transparent technopolymer, NBR O-rings, aluminium contrast screen, zinc-plated steel screws, SUPER-Technopolymer protection frame **Max. temperature** 90°C **Centre distance** 76 to 127 mm



GN 7403

Breather strainers



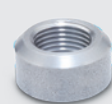
GN 743.6

Oil level indicators



GN 7490

Welding sockets with or without collar



HCX-P

Column level indicators with metal protection frame



HCK.

Column level indicators with transparent polycarbonate protection



Customisable length

HCX-E

Column level indicators with electrical sensor/probe



Standard machine elements for manoeuvring,
clamping and control operations
for construction vehicles and equipment

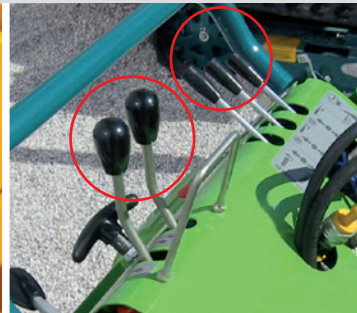
An extensive range of **clamping knobs** and adjustable **levers**; lift and revolving handles; **control knobs** and **control levers**; **hinges** all made in metal or special technopolymer resistant to solvents, oils, greases and other chemical agents with the greatest care in surface finishing. **Ergonomy combined with a unique design, a well-proven quality and a perfect functionality.**



Application of GN 300.5 stainless steel adjustable levers



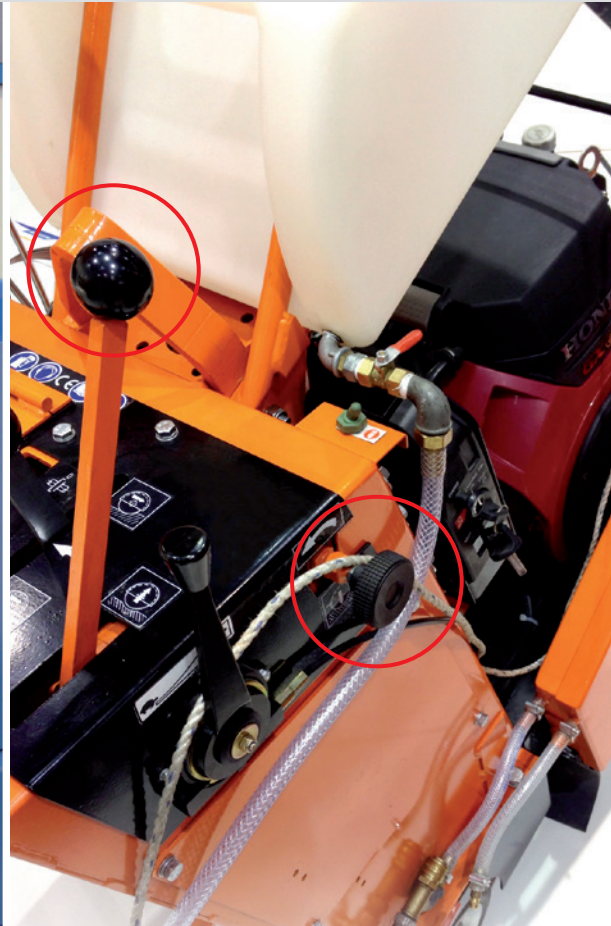
Application of GN 565 aluminium U-handles



Application of I.222 and I.280 Duroplast handles



Application of GN 598.5 retractable handles and L.652 T-handles



Application of PLX. plain spherical knobs and MBT. diamond-cut knurled knobs

The full Range



Operating elements



Clamping knobs



Clamping levers



U-handles



Fixed, revolving, fold-away handles



Control elements



Rotary controls



Indexing elements



Machine elements



Joints



Levelling elements



Hinges



Latches



Hook, toggle and power clamps



Accessories for hydraulic systems



Tube clamp connectors



Castors and wheels



Retaining magnets

Two manufacturers
One world of standard parts



ELESA S.p.A.
via Pompei, 29
20900 Monza (Milano) ITALY
Phone: +39 039 2811.1
Fax: +39 039 836351
www.elesa.com
info@elesa.com

OTTO GANTER GmbH & Co. KG
Triberger Straße 3
78120 Furtwangen GERMANY
Phone: +49 7723 65 07 130
Fax: +49 7723 65 07 165
www.ganter-griff.com
info@ganter-griff.de

www.elesa-ganter.com