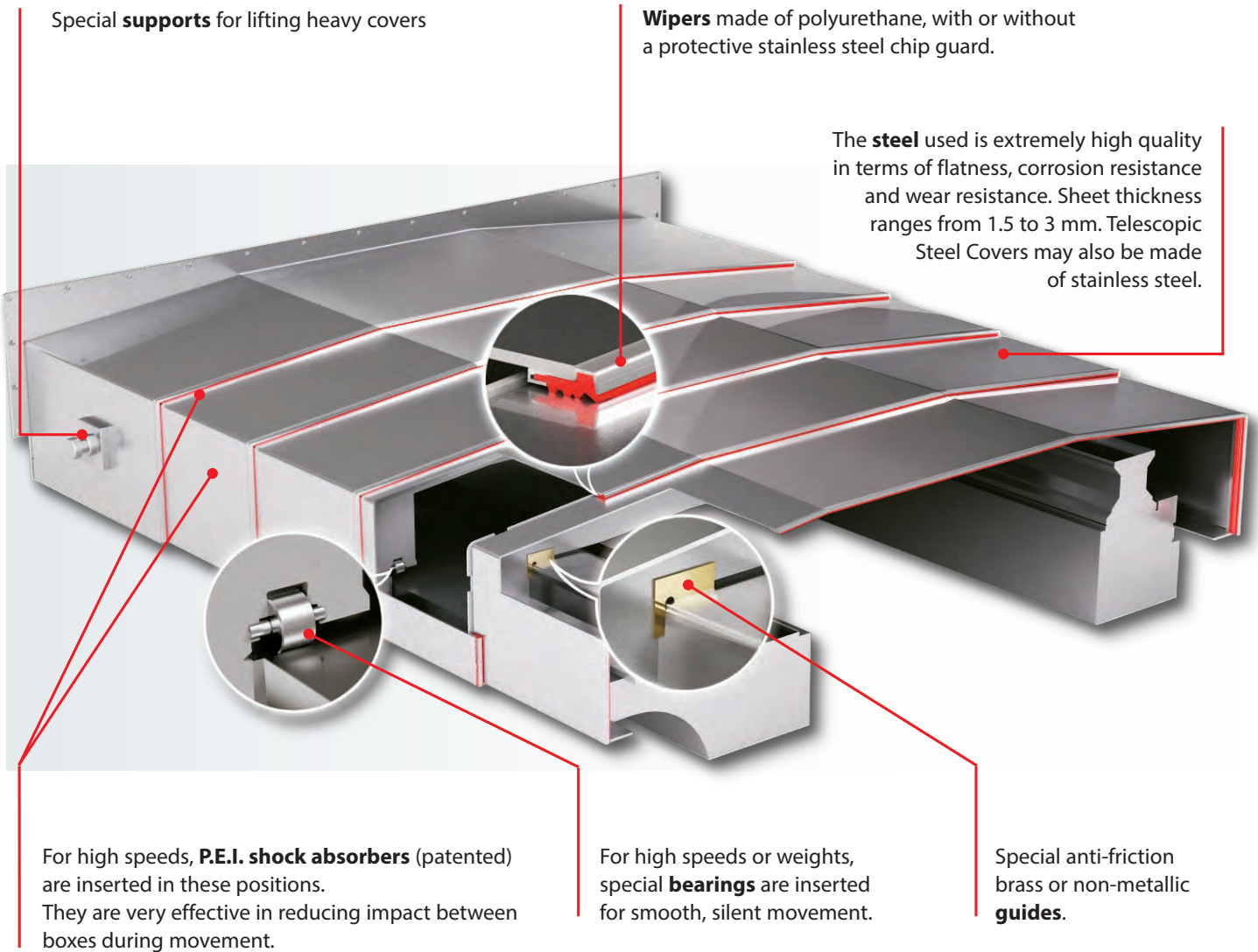


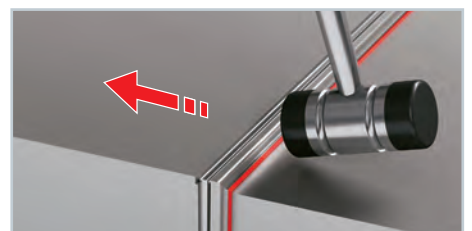
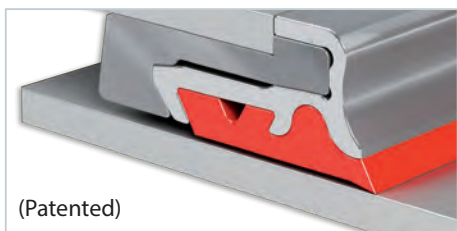


Telescopic Steel Covers for all types of machine tools



Reproduction of this page is strictly prohibited.

PR4A, the instantly replaceable and easily dismantable wiper

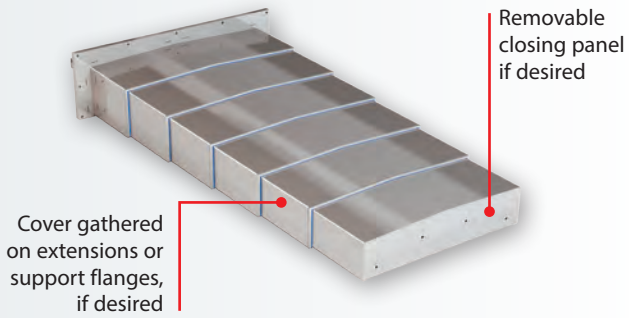


- WIPER PR4A is made of 3 independent elements: a solid metal profile on the telescopic cover box, a removable metal profile and a seal designed to clean the cover.
- The seal offers various technical features depending on the working conditions it is subjected (e.g. a working environment that uses coolants or a dry working environment in the PR4A D version).
- Telescopic covers equipped with WIPER PR4A allow the client to independently replace the wiper profile.

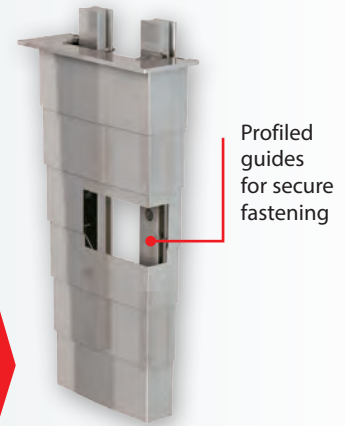


Working Positions

Horizontal position



Vertical position



Transverse position

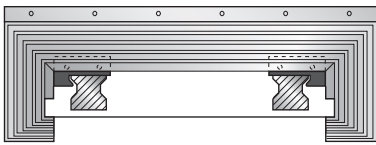


Transverse LATHE cover

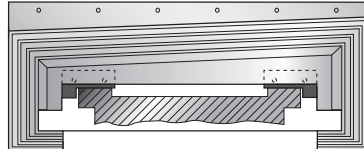


Configurations

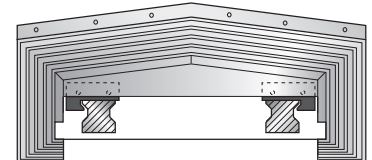
Shape 1



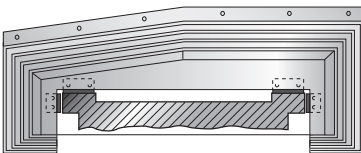
Shape 2



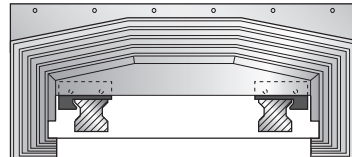
Shape 3



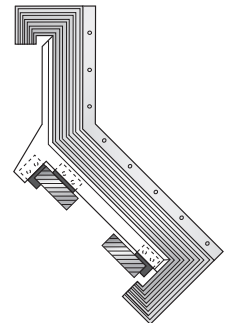
Shape 4



Shape 5

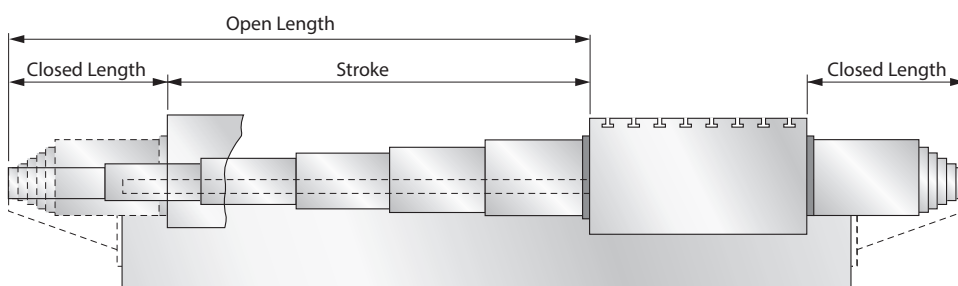


Shape 6



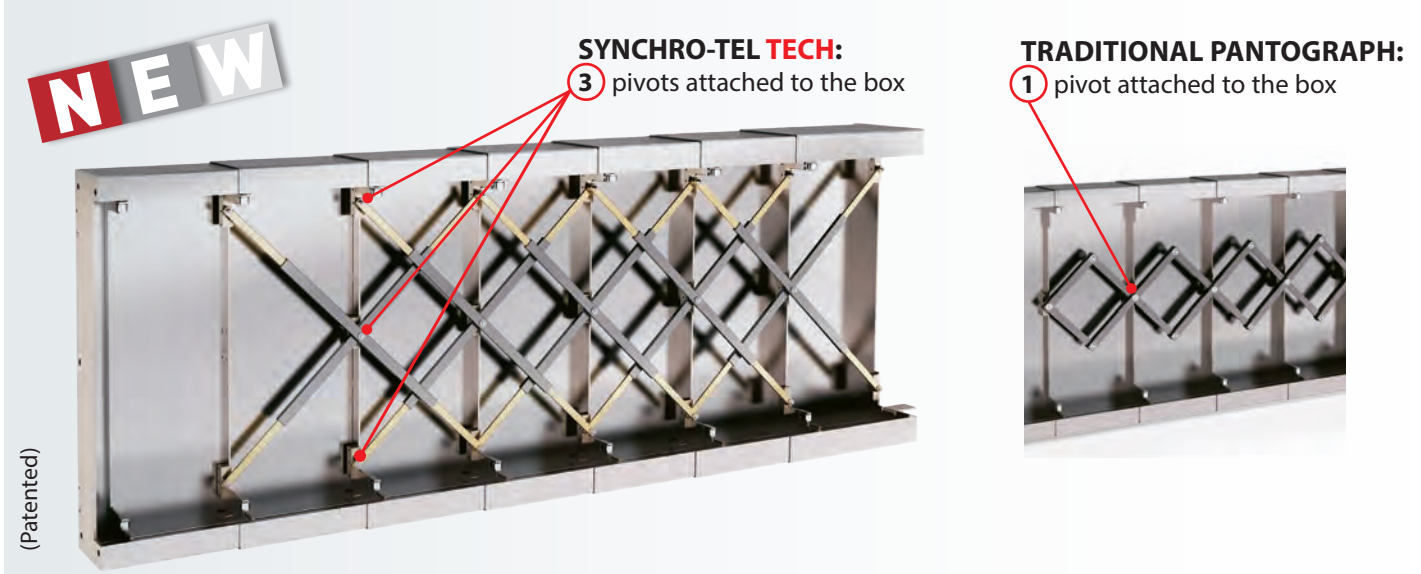
NOTE

Only a few standard configurations of Telescopic Steel Covers are shown above.



Reproduction of this page is strictly prohibited.

SYNCHRO-TEL The mechanical brace system that synchronizes movement in telescopic covers



SYNCHRO-TEL TECH: a perfect fit.
 PEI has reduced the fit tolerance of the metal braces.
 All pivots are attached to the boxes, avoiding sway of the braces.

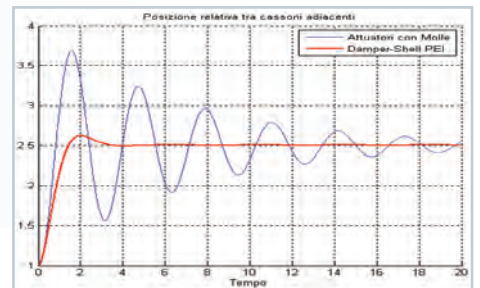
- SYNCHRO-TEL TECH synchronizes the opening and closure of medium sized telescopic covers and is ideal for working at high speeds and acceleration. It generates minimum stress on the pivots.
- It is convenient, SYNCHRO-TEL TECH eliminates any collision between the boxes.
- Guaranteed stability of the telescopic shafts secured by three pivots to the boxes.
- Mathematical testing and calculations prove SYNCHRO-TEL TECH to be the most reliable and durable synchro system on the current market.

DAMPER-SHELL viscoelastic shock absorbers for energy dissipation in large scale telescopic covers working in horizontal and frontal positions



DAMPER-SHELL EVO
 the energy dissipation is calculated for each project by means of a PEI software and depending on the weight, speed and acceleration of the cover.

- DAMPER-SHELL EVO is made of a special PEI formulation polymer fabric and is produced in two geometric dimensions.
- DAMPER-SHELL EVO guarantees up to 2.000.000 cycles.
- DAMPER-SHELL EVO is ideal for working speeds up to 100m/min and acceleration up to 1g.
- DAMPER-SHELL EVO is free from boost residue whether the telescopic cover is closed or in resting position.
- DAMPER-SHELL EVO opens smoothly during expansion without causing friction on the boxes.
- DAMPER-SHELL EVO has an excellent dimension/cost ratio.
- DAMPER-SHELL EVO is ideal for long strokes being a silent, durable and reliable solution.
- DAMPER-SHELL EVO is maintenance-free.

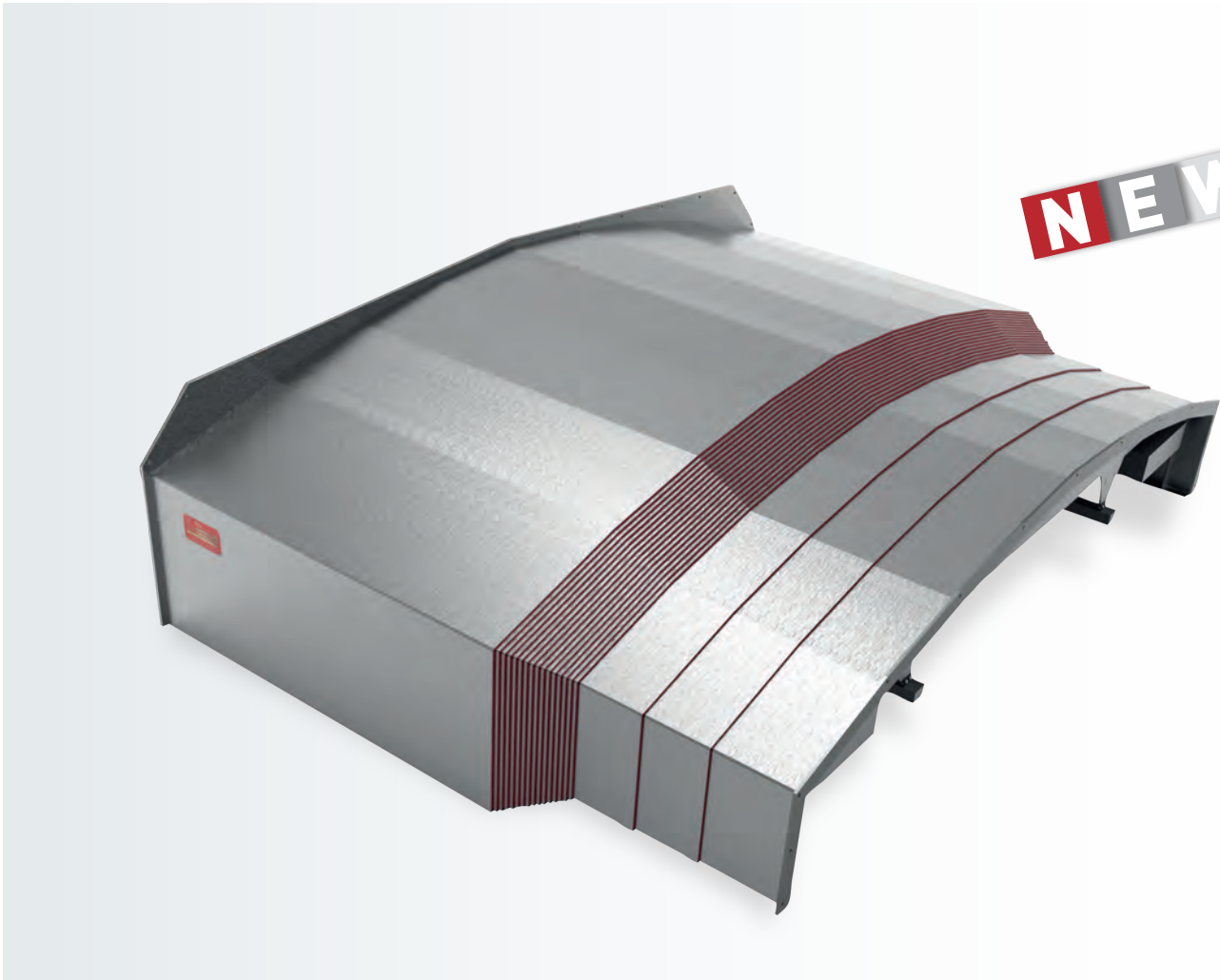


Reproduction of this page is strictly prohibited.



MULTIBEND The A++ cover for horizontal axes

NEW



Reproduction of this page is strictly prohibited.



MATHEMATICAL MODEL

In-house calculation software specially developed by PEI to calculate bending of the boxes and for consequently optimising geometry and cost savings.



WEIGHT REDUCTION

Weight reduction of the cover by up to 50 percent compared to a standard telescopic cover.

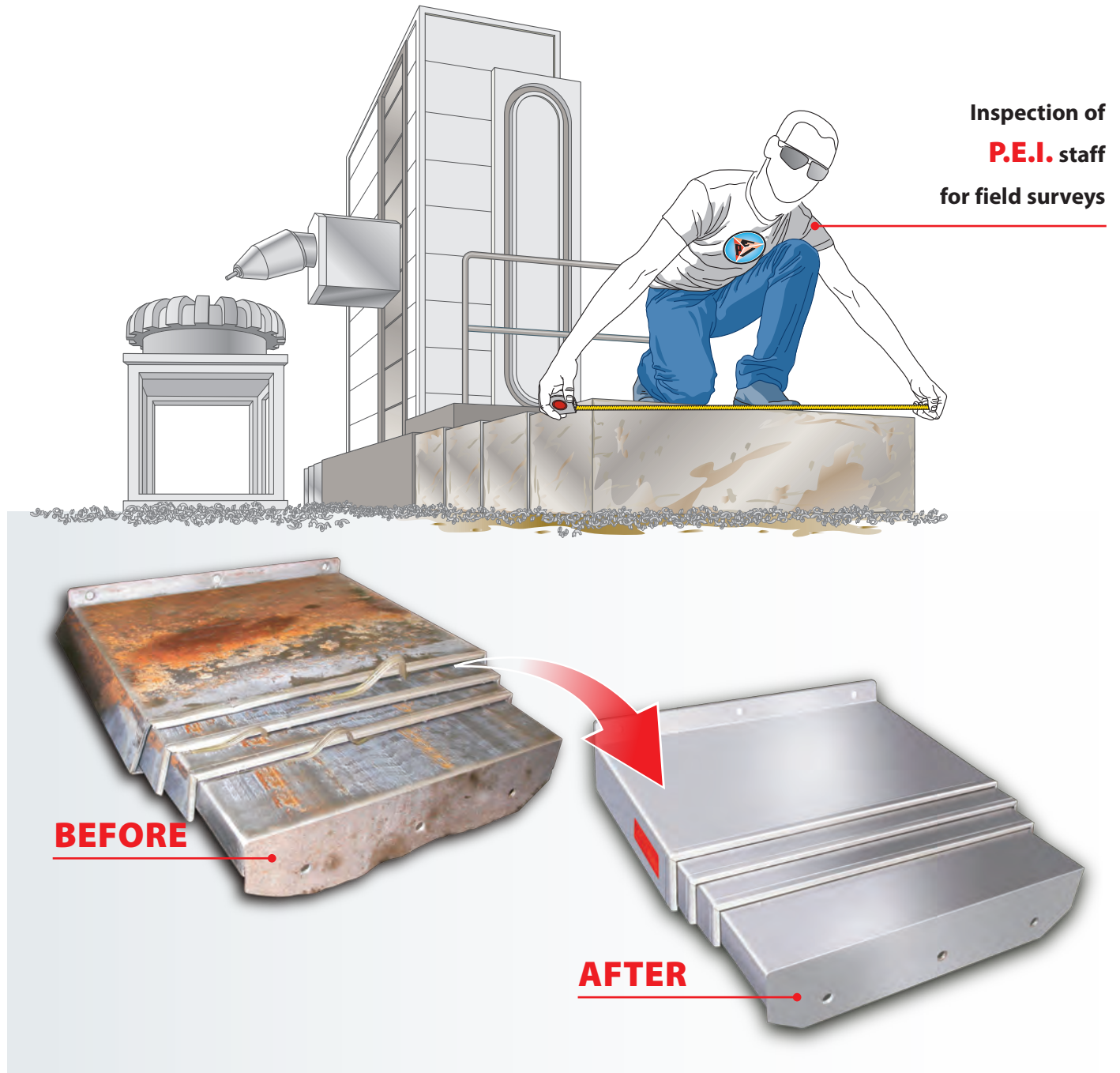


ENERGY SAVING

Reduction of the power required for driving the machine tool and abatement of CO₂ emissions.



Metal telescopic cover OVERHAULING



Inspection of
P.E.I. staff
for field surveys

BEFORE

AFTER

- Overhaul of ALL TYPES of telescopic covers for machine tools
- Revision or replacement of damaged sections
- Replace riders or guide rollers
- Replace brass wear strips
- Clean and buffed to original finish
- In case of too damaged telescopic covers, we can build them new.

- **SHORT DELIVERY TIME**

Reproduction of this page is strictly prohibited.