

## Dismountable split set collars

Clamping assembly, technopolymer

### MATERIAL

Glass-fibre reinforced polyamide based (PA) technopolymer.

### SCREWS AND NUTS

Cylindrical head screws with hexagon socket and AISI 316 stainless steel nuts supplied assembled with the two half-rings.

### FEATURES AND APPLICATIONS

- Suitable for assembly on idle shafts as end stops, for fixing end limit switches, pulleys, supporting pins or other components.
- They avoid damage to the surfaces of the shaft.
- Anticorrosive material: possibility of use even in the presence of liquids.
- Resistant to several cleaning cycles with solvents and other chemical agents, for this reason they can be used for applications in the pharmaceutical or food industry.

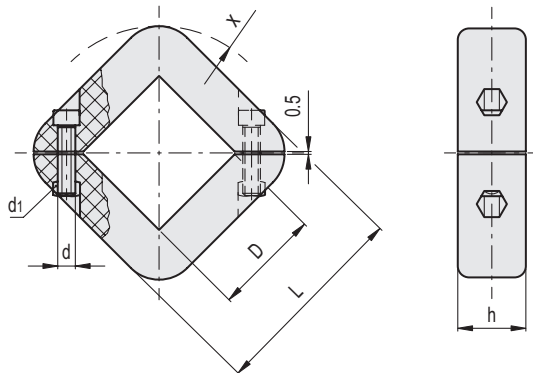
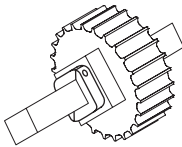
### TECHNICAL DATA

Assembly on square shafts with tolerance  $0 \pm +0.2$ .



ELESA Original design

Application example



Code	Description	D	d	d1	d2	L	h	x	Max. tightening torque [Nm]	
319952	ANPS-Q-25	25	M6	M6	10	62	18	37	5	76
319962	ANPS-Q-30	30	M6	M6	10	62	18	37	5	72
319982	ANPS-Q-40	40	M6	M6	10	72	18	44	5	75
319987	ANPS-Q-50	50	M6	M6	10	82	18	51	5	98
319996	ANPS-Q-60	60	M6	M6	10	92	18	58	5	110