

## Bipod supports

### Technopolymer

#### MATERIAL

Glass-fibre reinforced polyamide based (PA) technopolymer, black colour, matte finish.

#### STANDARD EXECUTIONS

- **BAS2-A:** zinc-plated steel M10 screws, nuts and washers.
- **BAS2-SST:** AISI 304 stainless steel M10 screws, nuts and washers.

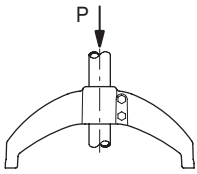
#### ASSEMBLY ON LEVELLING ELEMENTS

The bipod support bases are supplied with brass bosses, threaded pass-through hole for the assembly of the stem of the levelling element series LS.A, LV.A, LV.F.

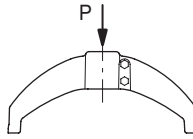
#### FEATURES

The rounded shapes with a modern and elegant aesthetic guarantee maximum cleanability in the event of liquids or dust falling from above.

Maximum tightening torque for screw assembly 35 Nm.

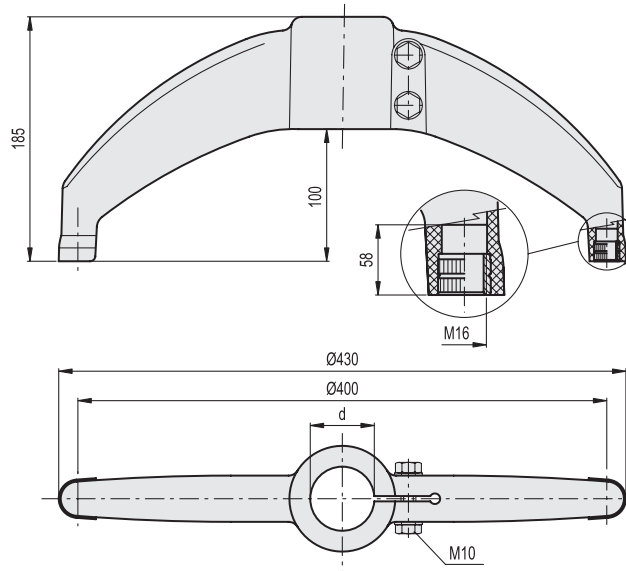


Retention force  
P = 2000 N



Max. static load  
P = 9800 N

Values obtained with tightening torque 35 Nm



#### BAS2-A

Code	Description	d Tube (mm)	d Tube (GAS)	⚖️
419636	BAS2-42-A	42.4	1"1/4	680
419634	BAS2-48-A	48.3	1"1/2	670
419632	BAS2-60-A	60.3	2"	650

#### BAS2-SST

**STAINLESS STEEL**

Code	Description
419637	BAS2-42-SST
419635	BAS2-48-SST
419633	BAS2-60-SST