

Bases for spindle locking

for DD52R-E and DD52R-E-RF position indicators, zinc alloy

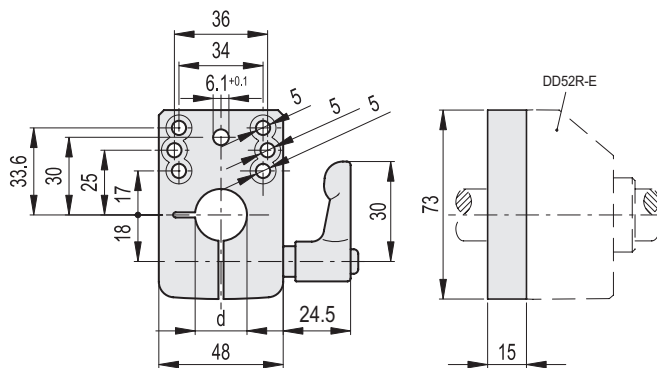
MATERIAL

Die-cast zinc alloy bases for spindle locking, epoxy resin coating, black colour, matte finish.

GN 302.1 adjustable handle with lever body in die-cast zinc alloy, black colour and AISI 303 stainless steel clamping element.

FEATURES AND APPLICATIONS

BSA52-E locking bases allow an easy and quick locking of the spindles after their positioning. Ø 6.1 mm hole to fit the referring pin of the indicator. Handle positioned either on the right or on the left. Fitting to the machine by means of two cylindrical-head screws (not included in the supply).



| Code | Description | dF9 | ΔΔ |
|----------|-------------|-----|-----|
| CE.99091 | BSA52-E-12 | 12 | 234 |
| CE.99093 | BSA52-E-14 | 14 | 232 |
| CE.99094 | BSA52-E-15 | 15 | 230 |
| CE.99095 | BSA52-E-16 | 16 | 228 |
| CE.99099 | BSA52-E-20 | 20 | 226 |