

Hinges for narrow jambs and doors

SUPER-technopolymer

MATERIAL

Glass-fibre reinforced polyamide based (PA) SUPER-technopolymer, black colour, matte finish.

ROTATING PIN

AISI 304 stainless steel.

STANDARD EXECUTION

Pass-through holes for M5 countersunk head screws.

FEATURES AND APPLICATIONS

The CFBS hinge is made up of two elements of different sizes and a rotation pin to be inserted upon assembly. They can be installed on folded sheet metal doors, with the possibility of also applying a seal between the door and the frame (see fig. 1).

ASSEMBLY INSTRUCTIONS

- Assemble the two elements, one on the jamb side and one on the door side.
- Use a suitable tool to insert the rotation pin from the non-knurled side until it locks into the hinge body.

ROTATION ANGLE (APPROXIMATE VALUE)

Max 180° (0° and +180° being 0° the condition where the two interconnected surfaces are on the same plane).

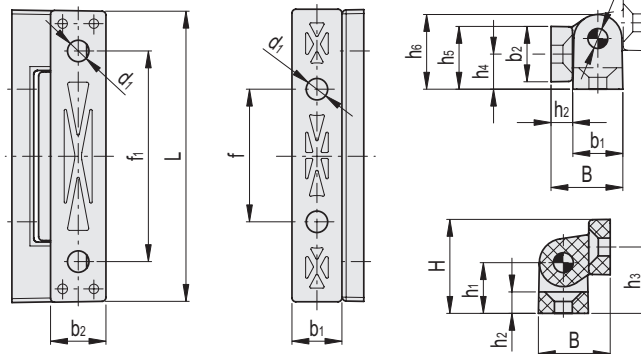
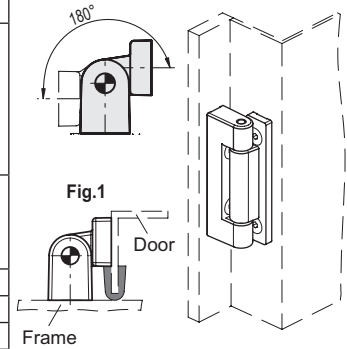
Do not exceed the rotation angle limit so as not to prejudice the hinge mechanical performance.

To choose the convenient type and the right number of hinges for your application, see the Guidelines.



ELESA Original design

| Resistance tests | AXIAL STRESS | | RADIAL STRESS | | 90° ANGLED STRESS | |
|------------------|-----------------------------|-------------------------|-----------------------------|-------------------------|------------------------------|--------------------------|
| | | | | | | |
| Description | Maximum working load Ea [N] | Load at breakage Ra [N] | Maximum working load Er [N] | Load at breakage Rr [N] | Maximum working load E90 [N] | Load at breakage R90 [N] |
| CFBS.75-13 SH-5 | 500 | 3400 | 2000 | 3200 | 1500 | 2800 |
| CFBS.75-18 SH-5 | 600 | 4500 | 2000 | 3200 | 1000 | 3500 |
| CFBS.75-23 SH-5 | 800 | 4500 | 2000 | 3200 | 900 | 3500 |



| Code | Description | L | B | d1 | h2 | f±0.25 | f1±0.25 | H | h1 | h3 | h4 | h5 | h6 | b1 | b2 | d | C# [Nm] | Δ |
|--------|-----------------|----|------|-----|-----|--------|---------|------|------|------|------|------|------|----|------|---|---------|----|
| 422551 | CFBS.75-13 SH-5 | 75 | 18,5 | 5,5 | 5,5 | 34 | 54 | 24 | 13 | 17 | 9 | 16 | 19 | 13 | 14,5 | 5 | 4 | 40 |
| 422553 | CFBS.75-19 SH-5 | 75 | 18,5 | 5,5 | 5,5 | 34 | 54 | 30 | 19 | 23 | 15 | 22 | 25 | 13 | 14,5 | 5 | 4 | 47 |
| 422555 | CFBS.75-23 SH-5 | 75 | 18,5 | 5,5 | 5,5 | 34 | 54 | 34,5 | 23,5 | 27,5 | 19,5 | 26,5 | 29,5 | 13 | 14,5 | 5 | 4 | 52 |

Maximum tightening torque.