

Lever latches with key

Lock, stainless steel

STATOR AND ROTOR

AISI 316L stainless steel.

FRONT PLATE

Stainless steel.

NUT

M19x1 in AISI 303 stainless steel.

FLAT SPRING WASHER

AISI 304 stainless steel.

INTERNAL TOOTHED WASHER

AISI 430 stainless steel.

CLOSING LEVER

AISI 304 stainless steel, 2.5 mm thickness.
Assembly by means of AISI 304 stainless steel hexagon nut M6x0.75.

ROTATION

180°.

TWO KEYS

Nickel-plated brass, removable in two positions at 180°.

IP PROTECTION

IP 65 protection class, according to EN 60529 (on page A23).

STANDARD EXECUTIONS

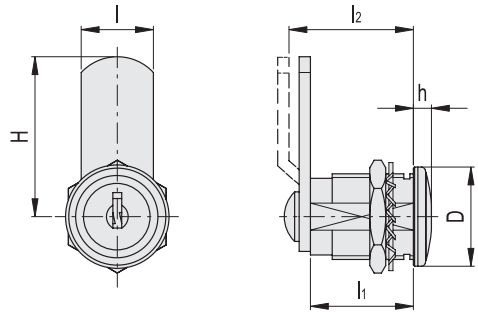
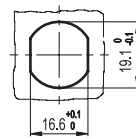
- **CS-SST**: lock with 400 different combinations: each lock has a couple of keys.
- **CS-M-SST**: lock with 190 different combinations and master-key; each lock has a couple of keys. Two master-keys, which open all of them, are supplied for every purchase order;
- **CSU-SST**: lock with one combination. All locks have the same combination and can be opened with the same key. Each lock has a couple of keys.

SPECIAL EXECUTIONS AND ACCESSORIES

Closing levers in other dimensions.



Drilling template



CS-SST

STAINLESS STEEL

Code	Description	D	H	l	l1	l2	h	ΔΔ
421441	CS.20-20-20-SST	24	20	16	20	-	4.5	45
421442	CS.20-32-20-SST	24	32	16	20	-	4.5	52
421443	CS.20-45-23-SST	24	45	16	20	23	4.5	60
421444	CS.20-46-20-SST	24	46	16	20	-	4.5	70

CS-M-SST

STAINLESS STEEL

Code	Description	D	H	l	l1	l2	h	ΔΔ
421446	CS.20-20-20-M-SST	24	20	16	20	-	4.5	45
421447	CS.20-32-20-M-SST	24	32	16	20	-	4.5	52
421448	CS.20-45-23-M-SST	24	45	16	20	23	4.5	60
421449	CS.20-46-20-M-SST	24	46	16	20	-	4.5	70

CSU-SST

STAINLESS STEEL

Code	Description	D	H	l	l1	l2	h	ΔΔ
421481	CSU.20-20-20-SST	24	20	16	20	-	4.5	45
421482	CSU.20-32-20-SST	24	32	16	20	-	4.5	52
421483	CSU.20-45-23-SST	24	45	16	20	23	4.5	60
421484	CSU.20-46-20-SST	24	46	16	20	-	4.5	70