

## Lever latches with T-Handle

### Operation with key, steel

#### HANDLE AND STATOR

Glossy chrome-plated zinc alloy.

#### ROTOR

Chrome-plated zinc alloy.

#### FRONT PLATE

Stainless steel.

#### NUT

M22x1,5 in zinc-plated zinc-alloy.

#### SPRING WASHER

Black-oxide steel.

#### WASHER

Zinc-plated steel.

#### CLOSING LEVERS

Zinc-plated steel flat and two-point closing lever, thickness 3 mm.

#### SCREW

M7x10 Zinc-plated steel.

#### TWO KEYS

Nickel-plated brass, removable in two positions at 180°.

#### ROTATION

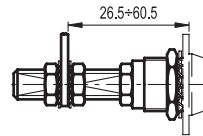
90° clockwise (right).

#### STANDARD EXECUTIONS

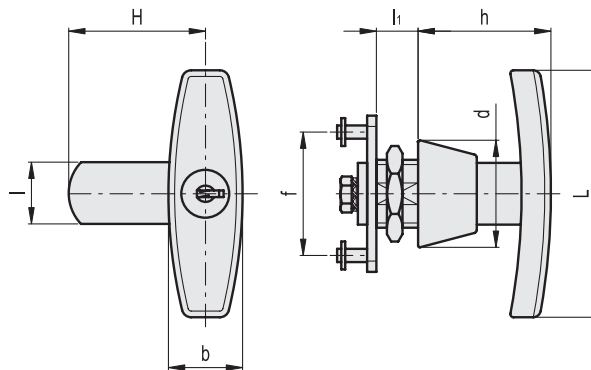
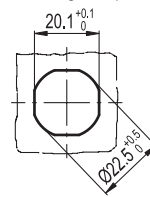
- **CSM.:** lock with 400 different combinations. Each lock has a couple of keys with different combination.
- **CSMU.:** lock with one combination. All locks have the same combination which can be opened with the same key.

#### SPECIAL EXECUTIONS AND ACCESSORIES

- Closing levers in other dimensions.
- Brass threaded extension (code 421140 C.PQ M7/53) and flat assembly lever (code 421145 LEVETTA PIANA 7x7) for prolonged positioning of the closing ledge



Drilling template



Code	Description	H	L	l	l1	b	h	d	f	Δ
421511	CSM.50	50	80	20	13.5	24	43	35	42	240
421513	CSMU.50	50	80	20	13.5	24	43	35	42	240

