

Crank handles

Technopolymer

MATERIAL

Glass-fibre reinforced polyamide based (PA) technopolymer, grey/black colour, matte finish.

STANDARD EXECUTIONS

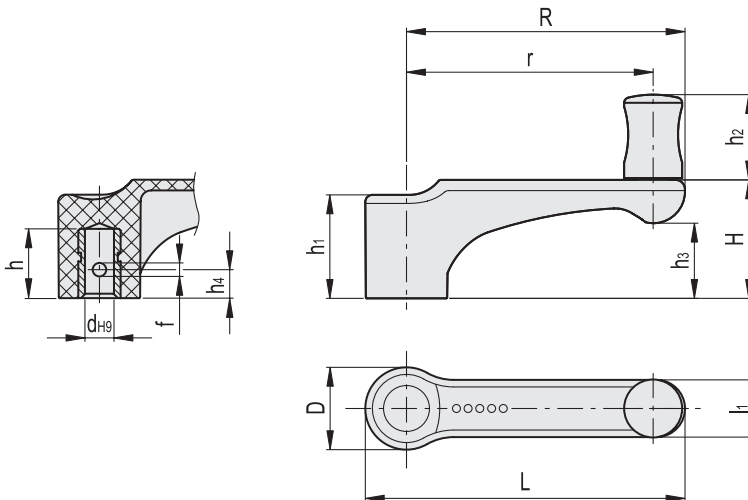
Brass boss, cylindrical blind hole, transversal semi-machined hole for pinning to shaft.

Revolving handle I.741+x (see page 581) in technopolymer.

The grooves cut into the cylindrical surface allow an effective and ergonomic grip, though necessarily limited to the fingertips, due to the small size of the handle.



ERGOSTYLE®



Code	Description	R	dH9	L	D	l ₁	h	h ₁	h ₂	h ₃	h ₄	H	r	f	⚖️
232411-C1	ERFW.44 N-6+I-C1	44	6	52	15.5	11	15	19	20	12.5	7	21	38	3	18
232431-C1	ERFW.63 N-8+I-C1	63	8	73.5	19	13.5	20	24.5	23	18.5	8	28.5	56	4	28
232451-C1	ERFW.78 N-10+I-C1	78	10	90.5	23	16	25	29.5	23	18	9	30	71	4	43

