

## Wing nuts

with elastic fork, technopolymer

### MATERIAL

Glass-fibre reinforced polyamide based (PA) technopolymer, grey-black colour, matte finish.

Elastic fork in acetal based technopolymer (POM), black colour.

### BOSS CAP

Polyamide based (PA) technopolymer, grey-black colour, matte finish, press-fit assembly, removable by a screwdriver.

### STANDARD EXECUTIONS

- **EWN-B-RC**: brass boss, threaded through hole.
- **EWN-SST-RC**: AISI 303 stainless steel, threaded pass-through hole.
- **EWN-p-RC**: zinc-plated steel threaded stud, chamfered flat end according to UNI EN ISO 4753:2012 (see Technical data).
- **EWN-SST-p-RC**: AISI 303 stainless steel threaded stud, chamfered flat end UNI EN ISO 4753:2012 (see Technical data).

### FEATURES AND APPLICATIONS

Suitable where it is necessary to prevent the loss of the wing nut. The elastic fork, housed in the groove of the knob can turn freely.

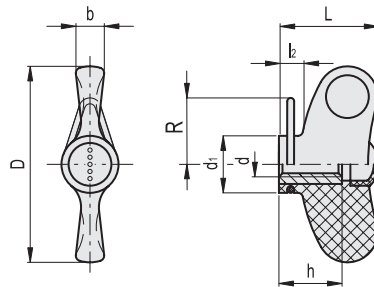
### ACCESSORIES ON REQUEST

- CT-S technopolymer and stainless steel ball chains.
- GN 111 stainless steel and brass ball chains.
- CV-T polyethylene and stainless steel retaining cables.
- GN 111.2 stainless steel retaining cables.
- GN 111.4 polyurethane and stainless steel spiral retaining cables.



ERGOSTYLE® ELESA Original design stuttgart 1998

EWN-B-RC  
EWN-SST-RC



### EWN-B-RC

Code	Description	D	d6H	L	d1	l2	b	h	R	C# [Nm]	⚖️
224921-C1	EWN.48-B-M5-RC-C1	47	M5	24	13.5	5.5	7	12	20.5	10	15
224922-C1	EWN.48-B-M6-RC-C1	47	M6	24	13.5	5.5	7	12	20.5	11	14
224952-C1	EWN.55-B-M6-RC-C1	55	M6	28	16	6.5	8	18	21.5	20	24
224953-C1	EWN.55-B-M8-RC-C1	55	M8	28	16	6.5	8	18	21.5	26	23
224983-C1	EWN.63-B-M8-RC-C1	63	M8	32	19	7.5	9	20	22.5	45	33
224984-C1	EWN.63-B-M10-RC-C1	63	M10	32	19	7.5	9	20	22.5	58	32

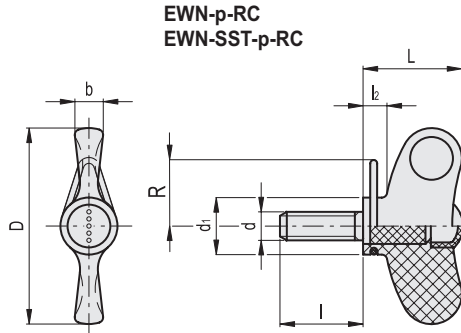
### EWN-SST-RC

STAINLESS STEEL

Code	Description	D	d6H	L	d1	l2	b	h	R	C# [Nm]	⚖️
224956-C1	EWN.55-SST-M8-RC-C1	55	M8	28	16	6.5	8	18	21.5	26	23
224986-C1	EWN.63-SST-M10-RC-C1	63	M10	32	19	7.5	9	20	22.5	58	32

# "Max limit Tightening torque" means the max torque value at which the metal insert, in normal conditions of use, is perfectly and strongly anchored to the plastic material.





EWN-p-RC

Code	Description	D	d <sub>6g</sub>	L	d <sub>1</sub>	l	l <sub>2</sub>	b	R	C# [Nm]	⚖️
224931-C1	EWN.48-p-M5x16-RC-C1	47	M5	24	13.5	16	5.5	7	20.5	9	15
224932-C1	EWN.48-p-M5x20-RC-C1	47	M5	24	13.5	20	5.5	7	20.5	9	16
224933-C1	EWN.48-p-M5x30-RC-C1	47	M5	24	13.5	30	5.5	7	20.5	9	18
224936-C1	EWN.48-p-M6x16-RC-C1	47	M6	24	13.5	16	5.5	7	20.5	12	16
224937-C1	EWN.48-p-M6x20-RC-C1	47	M6	24	13.5	20	5.5	7	20.5	12	18
224938-C1	EWN.48-p-M6x25-RC-C1	47	M6	24	13.5	25	5.5	7	20.5	12	19
224939-C1	EWN.48-p-M6x30-RC-C1	47	M6	24	13.5	30	5.5	7	20.5	12	21
224961-C1	EWN.55-p-M8x20-RC-C1	55	M8	28	16	20	6.5	8	21.5	22	27
224963-C1	EWN.55-p-M8x30-RC-C1	55	M8	28	16	30	6.5	8	21.5	22	30
224964-C1	EWN.55-p-M8x40-RC-C1	55	M8	28	16	40	6.5	8	21.5	22	33
224966-C1	EWN.55-p-M10x20-RC-C1	55	M10	28	16	20	6.5	8	21.5	25	30
224968-C1	EWN.55-p-M10x30-RC-C1	55	M10	28	16	30	6.5	8	21.5	25	33
224969-C1	EWN.55-p-M10x40-RC-C1	55	M10	28	16	40	6.5	8	21.5	25	36
224991-C1	EWN.63-p-M8x20-RC-C1	63	M8	32	19	20	7.5	9	22.5	32	34
224993-C1	EWN.63-p-M8x30-RC-C1	63	M8	32	19	30	7.5	9	22.5	32	37
224994-C1	EWN.63-p-M8x40-RC-C1	63	M8	32	19	40	7.5	9	22.5	32	39
224997-C1	EWN.63-p-M10x20-RC-C1	63	M10	32	19	20	7.5	9	22.5	48	40
224998-C1	EWN.63-p-M10x30-RC-C1	63	M10	32	19	30	7.5	9	22.5	48	43
224999-C1	EWN.63-p-M10x40-RC-C1	63	M10	32	19	40	7.5	9	22.5	48	52

EWN-SST-p-RC

STAINLESS STEEL

Code	Description	D	d <sub>6g</sub>	L	d <sub>1</sub>	l	l <sub>2</sub>	b	R	C# [Nm]	⚖️
224942-C1	EWN.48-SST-p-M6x20-RC-C1	47	M6	24	13.5	20	5.5	7	20.5	11	17
224944-C1	EWN.48-SST-p-M6x30-RC-C1	47	M6	24	13.5	30	5.5	7	20.5	11	19
224948-C1	EWN.48-SST-p-M8x20-RC-C1	47	M8	24	13.5	20	5.5	7	20.5	11	20
224949-C1	EWN.48-SST-p-M8x30-RC-C1	47	M8	24	13.5	30	5.5	7	20.5	11	23
224950-C1	EWN.48-SST-p-M8x40-RC-C1	47	M8	24	13.5	40	5.5	7	20.5	11	26
224971-C1	EWN.55-SST-p-M8x20-RC-C1	55	M8	28	16	20	6.5	8	21.5	22	27
224973-C1	EWN.55-SST-p-M8x30-RC-C1	55	M8	28	16	30	6.5	8	21.5	22	30
224974-C1	EWN.55-SST-p-M8x40-RC-C1	55	M8	28	16	40	6.5	8	21.5	22	34
225007-C1	EWN.63-SST-p-M10x20-RC-C1	63	M10	32	19	20	7.5	9	22.5	48	40
225008-C1	EWN.63-SST-p-M10x30-RC-C1	63	M10	32	19	30	7.5	9	22.5	48	44
225009-C1	EWN.63-SST-p-M10x40-RC-C1	63	M10	32	19	40	7.5	9	22.5	48	52

# "Max limit Tightening torque" means the max torque value at which the metal insert, in normal conditions of use, is perfectly and strongly anchored to the plastic material.



2

Clamping knobs