

EWN-SST-p-P



Wing knobs

Technopolymer, pad

MATERIAL

Glass-fibre reinforced polyamide based (PA) technopolymer, grey-black colour, matte finish.

BOSS CAP

- ECA.W: glass-fibre reinforced polyamide based (PA) technopolymer, in Elecolors colours, matte finish, press-fit assembly. Supplied, removable by a screwdriver.

Available also as accessory sold separately (see table)

STANDARD EXECUTIONS

- EWN-SST-p-PO: AISI 303 stainless steel threaded stud, acetal resin (POM) pad.
- EWN-SST-p-PB: AISI 303 stainless steel threaded stud, brass pad.

FEATURES AND APPLICATIONS

The chamfered end with bolt avoids to damage the surface of contact even in case of strong clamping.
Standard executions either with brass or acetal resin pad.

ERGONOMY AND DESIGN

The slightly concave marks on the wings help to position the fingers in order to apply the maximum force when tightening.

ACCESSORIES ON REQUEST

- ECA.W: glass-fibre reinforced polyamide based (PA) technopolymer boss cap, in Elecolors colours, matte finish, press-fit assembly (see table).



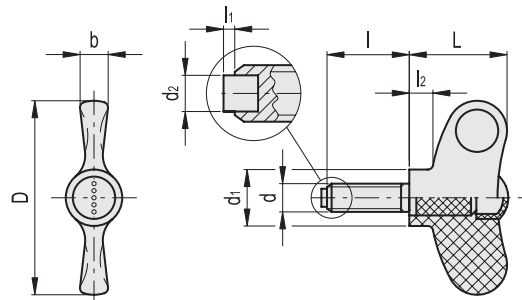
ERGOSTYLE® stuttgart



ECA.W

Code	Description	Boss cap for
29752-*	ECA.W2-*	EWN.48
29753-*	ECA.W3-*	EWN.55
29754-*	ECA.W4-*	EWN.70

* Complete with colour index (C1, ..., C17).



* Complete with colour index, example: 224556-C2 EWN.48-SST-p-M6x20-PO-C2



EWN-SST-p-PO

STAINLESS STEEL

Code	Description	D	d6g	L	d1	d2	l	l1	l2	b	⚖
224556-*	EWN.48-SST-p-M6x20-PO-*	47	M6	24	13.5	4	20	1.5	5.5	7	13
224566-*	EWN.48-SST-p-M6x30-PO-*	47	M6	24	13.5	4	30	1.5	5.5	7	15
224646-*	EWN.55-SST-p-M8x20-PO-*	55	M8	28	16	5	20	1.8	6.5	8	23
224656-*	EWN.55-SST-p-M8x30-PO-*	55	M8	28	16	5	30	1.8	6.5	8	26
224676-*	EWN.70-SST-p-M10x20-PO-*	70	M10	36	20	6	20	2	8	10	41
224686-*	EWN.70-SST-p-M10x30-PO-*	70	M10	36	20	6	30	2	8	10	47

EWN-SST-p-PB

STAINLESS STEEL

Code	Description	D	d6g	L	d1	d2	l	l1	l2	b	⚖
224576-*	EWN.48-SST-p-M6x20-PB-*	47	M6	24	13.5	4	20	1.5	5.5	7	14
224586-*	EWN.48-SST-p-M6x30-PB-*	47	M6	24	13.5	4	30	1.5	5.5	7	16
224661-*	EWN.55-SST-p-M8x20-PB-*	55	M8	28	16	5	20	1.8	6.5	8	24
224666-*	EWN.55-SST-p-M8x30-PB-*	55	M8	28	16	5	30	1.8	6.5	8	27
224691-*	EWN.70-SST-p-M10x20-PB-*	70	M10	36	20	6	20	2	8	10	42
224696-*	EWN.70-SST-p-M10x30-PB-*	70	M10	36	20	6	30	2	8	10	48

