

Oil level sight glasses

with index level check, transparent technopolymer

MATERIAL

Transparent polyamide based (PA-T) technopolymer. Avoid contact with alcohol or detergents containing alcohol.

STANDARD EXECUTIONS

Reading reference outlined by a reference circle:

- **HCFE-C**: with time stamped red circle.
- **HCFE-CB**: with time stamped white circle.

Tampoprinting resistant to oils with additives, greases, alkali and white spirit; resistant to abrasions under normal working conditions. Avoid contact with solvents, alcohol or detergents containing alcohol.

PACKING RING

NBR synthetic rubber.

MAXIMUM CONTINUOUS WORKING TEMPERATURE

100°C.

TECHNICAL DATA

The tightening torque indicated in the table guarantees an optimal tightness, keeping the packing ring in the correct position.

NOTE

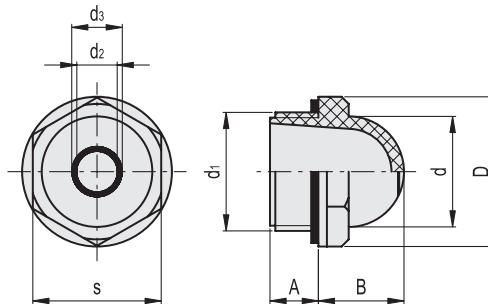
For use with other fluids with special additives, please contact ELESA Sales Department.

ACCESSORIES ON REQUEST

Brass nut type GH. (see page -) for fitting to reservoirs with wall thickness smaller than 5 mm.



ELESA Original design



HCFE-C

Code	Description	d ₁	A	B	D	d	d ₂	d ₃	s	Tightening torque [Nm]	⚖️
10906	HCFE.15/C-1/2	G 1/2	10.5	16	26	19	6	7	22	4÷6	6
11006	HCFE.20/C-3/4	G 3/4	10.5	19.5	31.5	25	11	12	27	6÷8	8
11106	HCFE.24/C-1	G 1	11	24	42	31	14	15	36	8÷10	18

HCFE-CB

Code	Description	d ₁	A	B	D	d	d ₂	d ₃	s	Tightening torque [Nm]	⚖️
10906-CB	HCFE.15/CB-1/2	G 1/2	10.5	16	26	19	6	7	22	4÷6	6
11006-CB	HCFE.20/CB-3/4	G 3/4	10.5	19.5	31.5	25	11	12	27	6÷8	8
11106-CB	HCFE.24/CB-1	G 1	11	24	42	31	14	15	36	8÷10	18