

## Levelling feet for ground mounting

### Technopolymer base, SUPER-technopolymer stem

#### BASE

Glass-fibre reinforced polyamide based (PA) technopolymer, black colour, matte finish.

#### ARTICULATED STEM

Glass-fibre reinforced polyamide based (PA) SUPER-technopolymer, with hexagonal socket and regulation hexagon.

#### STANDARD EXECUTIONS

- **LV.F-STP**: without no-slip disk.
- **LV.F-AS-STP**: with NBR rubber no-slip disk, hardness 70 Shore A, supplied assembled to the base.

#### GROUND MOUNTING

By means of two holes at 180°, supplied covered by a diaphragm (which can be easily removed by a metal tool), to avoid all unhealthy deposits of dirt and dust when the ground mounting is not required (see Fig.1).

#### FEATURES AND APPLICATIONS

Thanks to the property of the SUPER-technopolymer stem, high rigidity and mechanical resistance are obtained in addition to natural resistance to corrosion.

The special knurling under the lower lip of the base provides excellent stability and grip when using the levelling element without no-slip disk even on surfaces that are not perfectly flat.

The particular assembling system of the no-slip disk to the base assures a perfect anchoring, preventing separation even in case of impact during transport or of adhesion (sticking) to the floor (see No-slip disk).

#### ORDER INFORMATION

The levelling feet are supplied unassembled to make carriage and storage easier. The components (base and stem) are supplied in separate packing: less volume taken and better protection from scratches and dirt.

To order bases and stems separately, see:

- table of possible combinations Bases/Stems
- the codes of the Bases
- the codes of the Stems

#### ACCESSORIES ON REQUEST

NT.: AISI 304 stainless steel or zinc-plated steel nut.



ELESA Original design

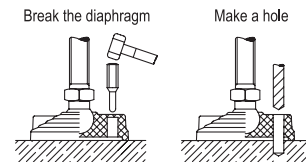
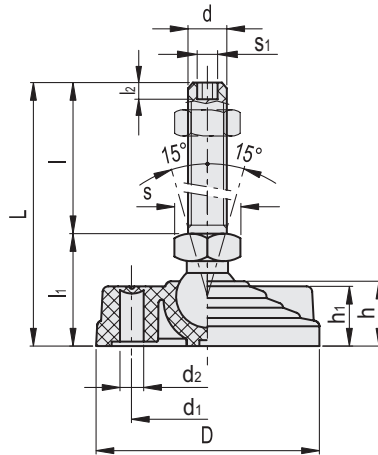


Fig.1

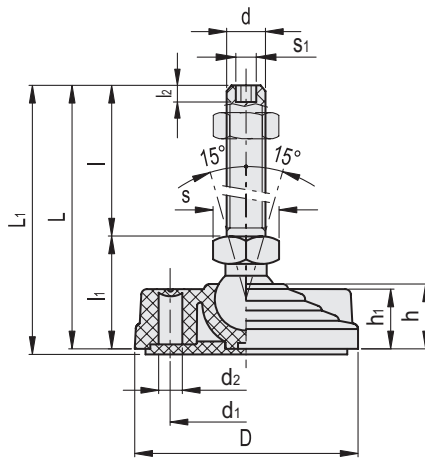


### LV.F-STP

| Code   | Description            | D   | d   | d1 | L   | l  | l1 | l2 | d2   | h  | h1 | s  | s1 | Articulation<br>Ø | Max. limit<br>static load*<br>[N] | ⚖️    |
|--------|------------------------|-----|-----|----|-----|----|----|----|------|----|----|----|----|-------------------|-----------------------------------|-------|
| 311123 | LV.F-80-14-STP-M8x44   | 80  | M8  | 54 | 79  | 44 | 35 | 5  | 8.5  | 24 | 23 | 16 | 3  | 14                | 2700                              | 63    |
| 311127 | LV.F-80-14-STP-M8x69   | 80  | M8  | 54 | 104 | 69 | 35 | 5  | 8.5  | 24 | 23 | 16 | 3  | 14                | 2700                              | 64.5  |
| 311223 | LV.F-80-14-STP-M10x44  | 80  | M10 | 54 | 79  | 44 | 35 | 6  | 8.5  | 24 | 23 | 16 | 4  | 14                | 4800                              | 64.5  |
| 311227 | LV.F-80-14-STP-M10x69  | 80  | M10 | 54 | 104 | 69 | 35 | 6  | 8.5  | 24 | 23 | 16 | 4  | 14                | 5000                              | 67    |
| 311233 | LV.F-80-14-STP-M10x99  | 80  | M10 | 54 | 134 | 99 | 35 | 6  | 8.5  | 24 | 23 | 16 | 4  | 14                | 5100                              | 70    |
| 311323 | LV.F-80-14-STP-M12x44  | 80  | M12 | 54 | 79  | 44 | 35 | 7  | 8.5  | 24 | 23 | 16 | 5  | 14                | 6800                              | 66    |
| 311327 | LV.F-80-14-STP-M12x69  | 80  | M12 | 54 | 104 | 69 | 35 | 7  | 8.5  | 24 | 23 | 16 | 5  | 14                | 7000                              | 70    |
| 311333 | LV.F-80-14-STP-M12x99  | 80  | M12 | 54 | 134 | 99 | 35 | 7  | 8.5  | 24 | 23 | 16 | 5  | 14                | 7000                              | 74.5  |
| 312452 | LV.F-100-14-STP-M8x44  | 100 | M8  | 54 | 80  | 44 | 36 | 5  | 12.5 | 24 | 23 | 16 | 3  | 14                | 2700                              | 93    |
| 312454 | LV.F-100-14-STP-M8x69  | 100 | M8  | 54 | 105 | 69 | 36 | 5  | 12.5 | 24 | 23 | 16 | 3  | 14                | 2700                              | 94.5  |
| 312462 | LV.F-100-14-STP-M10x44 | 100 | M10 | 54 | 80  | 44 | 36 | 6  | 12.5 | 24 | 23 | 16 | 4  | 14                | 4800                              | 94.5  |
| 312464 | LV.F-100-14-STP-M10x69 | 100 | M10 | 54 | 105 | 69 | 36 | 6  | 12.5 | 24 | 23 | 16 | 4  | 14                | 5000                              | 97    |
| 312466 | LV.F-100-14-STP-M10x99 | 100 | M10 | 54 | 135 | 99 | 36 | 6  | 12.5 | 24 | 23 | 16 | 4  | 14                | 5100                              | 100   |
| 312472 | LV.F-100-14-STP-M12x44 | 100 | M12 | 54 | 80  | 44 | 36 | 7  | 12.5 | 24 | 23 | 16 | 5  | 14                | 6800                              | 96    |
| 312474 | LV.F-100-14-STP-M12x69 | 100 | M12 | 54 | 105 | 69 | 36 | 7  | 12.5 | 24 | 23 | 16 | 5  | 14                | 7000                              | 100   |
| 312476 | LV.F-100-14-STP-M12x99 | 100 | M12 | 54 | 135 | 99 | 36 | 7  | 12.5 | 24 | 23 | 16 | 5  | 14                | 7000                              | 104.5 |

\* The max static load is the value above which the load applied to the element may cause some plastic material breakage, in particular conditions of use. Obviously, a factor that takes into consideration the importance and the safety level of the specific application must be applied to this value.





LV.F-AS-STP

| Code   | Description               | D   | d   | d1 | L   | L1  | l  | l1 | l2 | d2   | h  | h1 | s  | s1 | Articulation<br>Ø | Max. limit<br>static load*<br>[N] | ⚖️    |
|--------|---------------------------|-----|-----|----|-----|-----|----|----|----|------|----|----|----|----|-------------------|-----------------------------------|-------|
| 314123 | LV.F-80-14-AS-STP-M8x44   | 80  | M8  | 54 | 79  | 82  | 44 | 35 | 5  | 8.5  | 24 | 23 | 16 | 3  | 14                | 2700                              | 89    |
| 314127 | LV.F-80-14-AS-STP-M8x69   | 80  | M8  | 54 | 104 | 107 | 69 | 35 | 5  | 8.5  | 24 | 23 | 16 | 3  | 14                | 2700                              | 90.5  |
| 314223 | LV.F-80-14-AS-STP-M10x44  | 80  | M10 | 54 | 79  | 82  | 44 | 35 | 6  | 8.5  | 24 | 23 | 16 | 4  | 14                | 4800                              | 90.5  |
| 314227 | LV.F-80-14-AS-STP-M10x69  | 80  | M10 | 54 | 104 | 107 | 69 | 35 | 6  | 8.5  | 24 | 23 | 16 | 4  | 14                | 5000                              | 93    |
| 314233 | LV.F-80-14-AS-STP-M10x99  | 80  | M10 | 54 | 134 | 137 | 99 | 35 | 6  | 8.5  | 24 | 23 | 16 | 4  | 14                | 5100                              | 96    |
| 314323 | LV.F-80-14-AS-STP-M12x44  | 80  | M12 | 54 | 79  | 82  | 44 | 35 | 7  | 8.5  | 24 | 23 | 16 | 5  | 14                | 6800                              | 92    |
| 314327 | LV.F-80-14-AS-STP-M12x69  | 80  | M12 | 54 | 104 | 107 | 69 | 35 | 7  | 8.5  | 24 | 23 | 16 | 5  | 14                | 7000                              | 96    |
| 314333 | LV.F-80-14-AS-STP-M12x99  | 80  | M12 | 54 | 134 | 137 | 99 | 35 | 7  | 8.5  | 24 | 23 | 16 | 5  | 14                | 7000                              | 100.5 |
| 315452 | LV.F-100-14-AS-STP-M8x44  | 100 | M8  | 54 | 80  | 83  | 44 | 36 | 5  | 12.5 | 24 | 23 | 16 | 3  | 14                | 2700                              | 147   |
| 315454 | LV.F-100-14-AS-STP-M8x69  | 100 | M8  | 54 | 105 | 108 | 69 | 36 | 5  | 12.5 | 24 | 23 | 16 | 3  | 14                | 2700                              | 148.5 |
| 315462 | LV.F-100-14-AS-STP-M10x44 | 100 | M10 | 70 | 80  | 83  | 44 | 36 | 6  | 12.5 | 24 | 23 | 16 | 4  | 14                | 4800                              | 148.5 |
| 315464 | LV.F-100-14-AS-STP-M10x69 | 100 | M10 | 70 | 105 | 108 | 69 | 36 | 6  | 12.5 | 24 | 23 | 16 | 4  | 14                | 5000                              | 151   |
| 315466 | LV.F-100-14-AS-STP-M10x99 | 100 | M10 | 70 | 135 | 138 | 99 | 36 | 6  | 12.5 | 24 | 23 | 16 | 4  | 14                | 5100                              | 154   |
| 315472 | LV.F-100-14-AS-STP-M12x44 | 100 | M12 | 70 | 80  | 83  | 44 | 36 | 7  | 12.5 | 24 | 23 | 16 | 5  | 14                | 6800                              | 150   |
| 315474 | LV.F-100-14-AS-STP-M12x69 | 100 | M12 | 70 | 105 | 108 | 69 | 36 | 7  | 12.5 | 24 | 23 | 16 | 5  | 14                | 7000                              | 154   |
| 315476 | LV.F-100-14-AS-STP-M12x99 | 100 | M12 | 70 | 135 | 138 | 99 | 36 | 7  | 12.5 | 24 | 23 | 16 | 5  | 14                | 7000                              | 158.5 |

\* The max static load is the value above which the load applied to the element may cause some plastic material breakage, in particular conditions of use. Obviously, a factor that takes into consideration the importance and the safety level of the specific application must be applied to this value.