

Vulcanised rubber wheels

Steel centre body

COVERING WITH TREAD

Vulcanised rubber; hardness 80 Shore A.

WHEEL CENTRE BODY

Consisting of two zinc-plated and riveted plate disks.

ROLLING ACTION

Polyamide-based technopolymer (PA) hub and boss, integral to the wheel centre body.

APPLICATIONS

RE.E3 wheels may be mounted on different kinds of trolleys, with medium-light loads; it is also suitable for outdoor use. Typical applications: trolleys for industrial moving, for outdoor use also, waste dumpsters. For selection parameters see Technical data on page -).

RE.E3 wheels are also supplied with steel sheet bracket for medium-heavy loads (RE.E3 see page -).

ENVIRONMENTAL CONDITIONS

Suitable for use in humid environments and in the presence of atmospheric agents; use in environments with the presence of organic, chlorinated solvents, hydrocarbons and mineral oils is not recommended.

ROLLING RESISTANCE - FORCE / LOAD APPLIED

For each load and diameter, the table indicates the force (in N) needed to push or pull a single wheel at a constant speed of 4 km/h on smooth ground.

For manual handling of a 4-wheel trolley, it is recommended to choose diameters with values below 50 N; for frequent handling, choose values below 30 N.

MECHANICAL MOVING WITH TOWING DEVICES

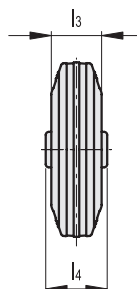
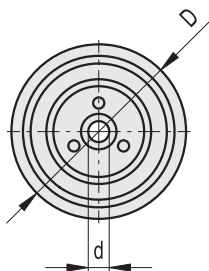
For mechanical towing, please see the technical specifications to determine the capacity variation.

TEMPERATURE

If operating temperatures in an application differ from the standard range of values, please see the technical specifications to determine the capacity variation.



Traction force or thrust for wheel movement [N]					
		Load [N]			
		500	1000	1500	2000
D [mm]	80	50	-	-	-
	100	30	-	-	-
	125	25	60	-	-
	150	20	50	80	-
	200	10	35	55	85



Code	Description	D	d	l ₃	l ₄	Static load# [N]	Rolling resistance# [N]	Dynamic carrying capacity# [N]	⚖️
450001	RE.E3-080-RBL	80	12	25	39	2600	500	650	170
450006	RE.E3-100-RBL	100	12	30	44	3000	750	800	280
450012	RE.E3-125-RBL	125	15	37.5	44	3300	850	1300	510
450016	RE.E3-150-RBL	150	15	40	44	3500	1000	1700	730
450022	RE.E3-200-RBL	200	20	50	58	4100	1400	2300	1750

For static load, rolling resistance and dynamic carrying capacity see Technical data (on page -).