

Breather caps

with splash guard, technopolymer

COVER

- SFP.....: RAL 2004 orange, marked "OIL".
- SFP.....-C9: RAL 9005 black colour, marked "OIL".
- SFP.....-C2-N: RAL 2004 orange, without "OIL" mark.
- SFP.....-C9-N: RAL 9005 black colour, without "OIL" mark.

THREADED FITTING

Polyamide based (PA) technopolymer, black colour, semi-matte finish.

PACKING RING

NBR synthetic rubber.

SPLASH GUARD

Technopolymer.

STANDARD EXECUTIONS

- **SFP.**: without air filter (black splash guard).
- **SFP+F-FIL.**: with "tech-fil" air filter in zinc-plated steel wire (orange splash guard).
- **SFP+F-FOAM.**: with "tech-foam" air filter in polyurethane foam mesh (polyester base), air filtration 40 µ (grey splash guard).
- **SFP-BA+F.**: with "tech-foam" air filter in polyurethane foam mesh (polyester base), air filtration 40 µ (grey splash guard).

Zinc-plated steel sheet bayonet.
Chrome-plated steel safety chain.

MAXIMUM CONTINUOUS WORKING TEMPERATURE

100°C.

FEATURES AND APPLICATIONS

SFP breather caps come complete with splash guard device (ELESA original design) that prevents oil loss and are particularly suitable for use where oil is violently agitated and could be splashed against breather cap.



ELESA Original design

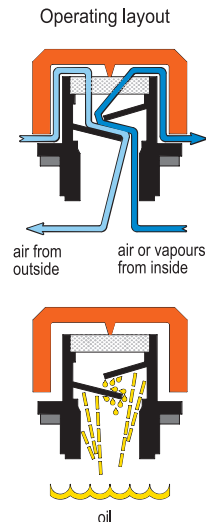
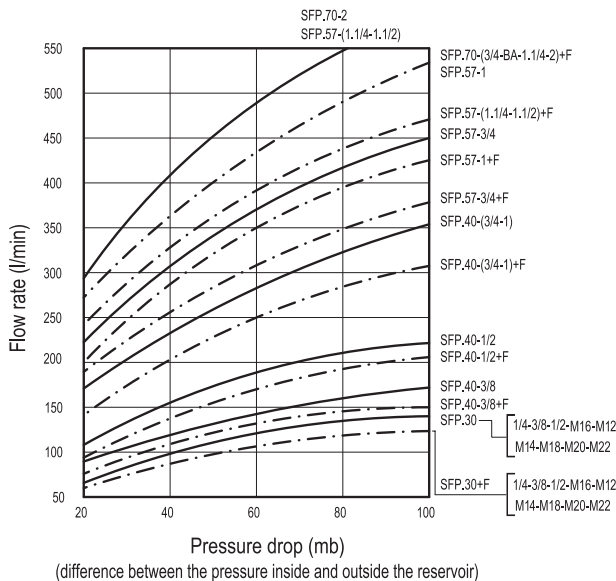


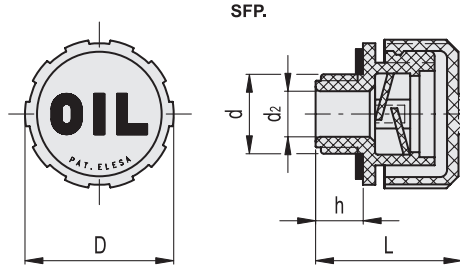
TECHNICAL DATA

Air flow rate for each model can be determined from the graph calculating the difference between the pressure inside and outside the reservoir.

SPECIAL EXECUTION ON REQUEST

Threaded connector also with NPT thread (National Taper Pipe Thread - ANSI-ASME B1-20) for the codes marked with # in the table.





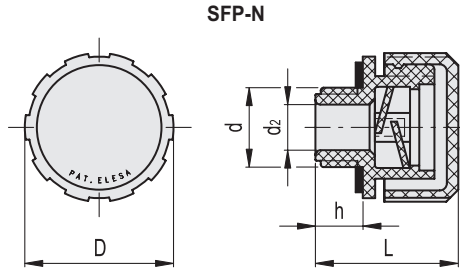
SFP.

Code	Description	D	d	L	d2	h	⚠
54141	SFP.30-12x1.5	31	M12x1.5	29.5	6	9.5	10
54141-C9	SFP.30-12x1.5-C9	31	M12x1.5	29.5	6	9.5	10
54161	SFP.30-14x1.5	31	M14x1.5	29.5	8	9.5	10
54161-C9	SFP.30-14x1.5-C9	31	M14x1.5	29.5	8	9.5	10
53941	SFP.30-16x1.5	31	M16x1.5	29.5	10	9.5	12
53941-C9	SFP.30-16x1.5-C9	31	M16x1.5	29.5	10	9.5	12
53961	SFP.30-18x1.5	31	M18x1.5	29.5	10	9.5	12
53961-C9	SFP.30-18x1.5-C9	31	M18x1.5	29.5	10	9.5	12
53981	SFP.30-20x1.5	31	M20x1.5	29.5	12	9.5	12
53981-C9	SFP.30-20x1.5-C9	31	M20x1.5	29.5	12	9.5	12
53991	SFP.30-22x1.5	31	M22x1.5	29.5	12	9.5	13
53991-C9	SFP.30-22x1.5-C9	31	M22x1.5	29.5	12	9.5	13
53935	SFP.30-1/4#	31	G1/4	29.5	8	9.5	12
53935-C9	SFP.30-1/4-C9#	31	G1/4	29.5	8	9.5	12
54001	SFP.30-3/8	31	G3/8	29.5	10	9.5	12
54001-C9	SFP.30-3/8-C9	31	G3/8	29.5	10	9.5	12
54101	SFP.30-1/2	31	G1/2	29.5	12	9.5	12
54101-C9	SFP.30-1/2-C9	31	G1/2	29.5	12	9.5	12
56651	SFP.40-3/8#	42	G3/8	36.5	10	11.5	22
56651-C9	SFP.40-3/8-C9#	42	G3/8	36.5	10	11.5	22
56671	SFP.40-1/2#	42	G1/2	36.5	12	11.5	24
56671-C9	SFP.40-1/2-C9#	42	G1/2	36.5	12	11.5	24
54201	SFP.40-3/4#	42	G3/4	36.5	18	11.5	26
54201-C9	SFP.40-3/4-C9#	42	G3/4	36.5	18	11.5	25
54301	SFP.40-1	42	G1	36.5	18	11.5	26
54301-C9	SFP.40-1-C9	42	G1	36.5	18	11.5	26
56701	SFP.57-3/4#	57	G3/4	42	18	14	43
56701-C9	SFP.57-3/4-C9#	57	G3/4	42	18	14	43
56731	SFP.57-1	57	G1	42	23	14	43
56731-C9	SFP.57-1-C9	57	G1	42	23	14	43
54401	SFP.57-1¼	57	G1¼	44	28	16	46
54401-C9	SFP.57-1¼-C9	57	G1¼	44	28	16	46
54501	SFP.57-1½	57	G1½	44	28	16	47
54501-C9	SFP.57-1½-C9	57	G1½	44	28	16	46
54876	SFP.70-2	70	G2	59	23	17	91
54876-C9	SFP.70-2-C9	70	G2	59	23	17	91

Types available on request with NPT thread (National Taper Pipe Thread - ANSI-ASME B1-20).



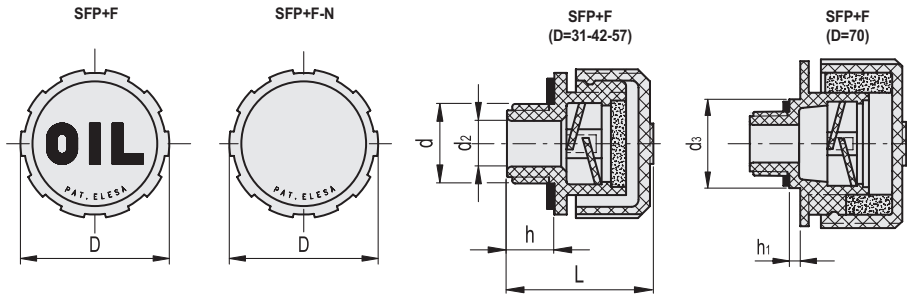
1
2
3
4
5
6
7
8
9
10
11
12
13
14
15
16
17
18
19
20
21
22
23
Accessories for hydraulic systems 15



SFP-N

Code	Description	D	d	L	dz	h	⚖
54141-C2-N	SFP.30-12x1.5-C2-N	31	M12x1.5	29.5	6	9.5	10
54141-C9-N	SFP.30-12x1.5-C9-N	31	M12x1.5	29.5	6	9.5	10
54161-C2-N	SFP.30-14x1.5-C2-N	31	M14x1.5	29.5	8	9.5	10
54161-C9-N	SFP.30-14x1.5-C9-N	31	M14x1.5	29.5	8	9.5	10
53941-C2-N	SFP.30-16x1.5-C2-N	31	M16x1.5	29.5	10	9.5	12
53941-C9-N	SFP.30-16x1.5-C9-N	31	M16x1.5	29.5	10	9.5	12
53961-C2-N	SFP.30-18x1.5-C2-N	31	M18x1.5	29.5	10	9.5	12
53961-C9-N	SFP.30-18x1.5-C9-N	31	M18x1.5	29.5	10	9.5	12
53981-C2-N	SFP.30-20x1.5-C2-N	31	M20x1.5	29.5	12	9.5	12
53981-C9-N	SFP.30-20x1.5-C9-N	31	M20x1.5	29.5	12	9.5	12
53991-C2-N	SFP.30-22x1.5-C2-N	31	M22x1.5	29.5	12	9.5	13
53991-C9-N	SFP.30-22x1.5-C9-N	31	M22x1.5	29.5	12	9.5	13
53935-C2-N	SFP.30-1/4-C2-N#	31	G1/4	29.5	8	9.5	12
53935-C9-N	SFP.30-1/4-C9-N#	31	G1/4	29.5	8	9.5	12
54001-C2-N	SFP.30-3/8-C2-N	31	G3/8	29.5	10	9.5	12
54001-C9-N	SFP.30-3/8-C9-N	31	G3/8	29.5	10	9.5	12
54101-C2-N	SFP.30-1/2-C2-N	31	G1/2	29.5	12	9.5	12
54101-C9-N	SFP.30-1/2-C9-N	31	G1/2	29.5	12	9.5	12
56651-C2-N	SFP.40-3/8-C2-N#	42	G3/8	36.5	10	11.5	23
56651-C9-N	SFP.40-3/8-C9-N#	42	G3/8	36.5	10	11.5	22
56671-C2-N	SFP.40-1/2-C2-N#	42	G1/2	36.5	12	11.5	24
56671-C9-N	SFP.40-1/2-C9-N#	42	G1/2	36.5	12	11.5	24
54201-C2-N	SFP.40-3/4-C2-N#	42	G3/4	36.5	18	11.5	25
54201-C9-N	SFP.40-3/4-C9-N#	42	G3/4	36.5	18	11.5	25
54301-C2-N	SFP.40-1-C2-N	42	G1	36.5	18	11.5	26
54301-C9-N	SFP.40-1-C9-N	42	G1	36.5	18	11.5	26
56701-C2-N	SFP.57-3/4-C2-N#	57	G3/4	42	18	14	43
56701-C9-N	SFP.57-3/4-C9-N#	57	G3/4	42	18	14	43
56731-C2-N	SFP.57-1-C2-N	57	G1	42	23	14	43
56731-C9-N	SFP.57-1-C9-N	57	G1	42	23	14	43
54401-C2-N	SFP.57-1¼-C2-N	57	G1¼	44	28	16	46
54401-C9-N	SFP.57-1¼-C9-N	57	G1¼	44	28	16	46
54501-C2-N	SFP.57-1½-C2-N	57	G1½	44	28	16	46
54501-C9-N	SFP.57-1½-C9-N	57	G1½	44	28	16	46
54876-C2-N	SFP.70-2-C2-N	70	G2	59	23	17	91
54876-C9-N	SFP.70-2-C9-N	70	G2	59	23	17	91

Types available on request with NPT thread (National Taper Pipe Thread - ANSI-ASME B1-20).

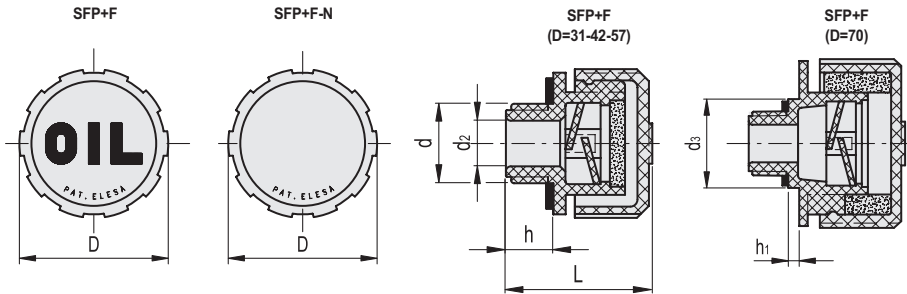


SFP+F-FIL

Code	Description	D	d	L	d2	h	⚖
54151	SFP.30-12x1.5+F FIL	31	M12x1.5	29.5	6	9.5	10
54151-C9	SFP.30-12x1.5+F FIL-C9	31	M12x1.5	29.5	6	9.5	10
54171	SFP.30-14x1.5+F FIL	31	M14x1.5	29.5	8	9.5	10
54171-C9	SFP.30-14x1.5+F FIL-C9	31	M14x1.5	29.5	8	9.5	10
53951	SFP.30-16x1.5+F FIL	31	M16x1.5	29.5	10	9.5	13
53951-C9	SFP.30-16x1.5+F FIL-C9	31	M16x1.5	29.5	10	9.5	13
53971	SFP.30-18x1.5+F FIL	31	M18x1.5	29.5	10	9.5	14
53971-C9	SFP.30-18x1.5+F FIL-C9	31	M18x1.5	29.5	10	9.5	14
53986	SFP.30-20x1.5+F FIL	31	M20x1.5	29.5	12	9.5	14
53986-C9	SFP.30-20x1.5+F FIL-C9	31	M20x1.5	29.5	12	9.5	14
53996	SFP.30-22x1.5+F FIL	31	M22x1.5	29.5	12	9.5	16
53996-C9	SFP.30-22x1.5+F FIL-C9	31	M22x1.5	29.5	12	9.5	16
53937	SFP.30-1/4+F FIL	31	G1/4	29.5	8	9.5	13
53937-C9	SFP.30-1/4+F FIL-C9	31	G1/4	29.5	8	9.5	13
54021	SFP.30-3/8+F FIL	31	G3/8	29.5	10	9.5	13
54021-C9	SFP.30-3/8+F FIL-C9	31	G3/8	29.5	10	9.5	13
54121	SFP.30-1/2+F FIL	31	G1/2	29.5	12	9.5	14
54121-C9	SFP.30-1/2+F FIL-C9	31	G1/2	29.5	12	9.5	14
56661	SFP.40-3/8+F FIL	42	G3/8	36.5	10	11.5	28
56661-C9	SFP.40-3/8+F FIL-C9	42	G3/8	36.5	10	11.5	28
56681	SFP.40-1/2+F FIL	42	G1/2	36.5	12	11.5	29
56681-C9	SFP.40-1/2+F FIL-C9	42	G1/2	36.5	12	11.5	29
54221	SFP.40-3/4+F FIL	42	G3/4	36.5	18	11.5	30
54221-C9	SFP.40-3/4+F FIL-C9	42	G3/4	36.5	18	11.5	30
54321	SFP.40-1+F FIL	42	G1	36.5	18	11.5	32
54321-C9	SFP.40-1+F FILC9	42	G1	36.5	18	11.5	32
56711	SFP.57-3/4+F FIL	57	G3/4	42	18	14	51
56711-C9	SFP.57-3/4+F FIL-C9	57	G3/4	42	18	14	51
56741	SFP.57-1+F FIL	57	G1	42	23	14	52
56741-C9	SFP.57-1+F FIL-C9	57	G1	42	23	14	52
54421	SFP.57-1¼+F FIL	57	G1¼	44	28	16	55
54421-C9	SFP.57-1¼+F FIL-C9	57	G1¼	44	28	16	55
54521	SFP.57-1½+F FIL	57	G1½	44	28	16	56
54521-C9	SFP.57-1½+F FIL-C9	57	G1½	44	28	16	56

Types available on request with NPT thread (National Taper Pipe Thread - ANSI-ASME B1-20).



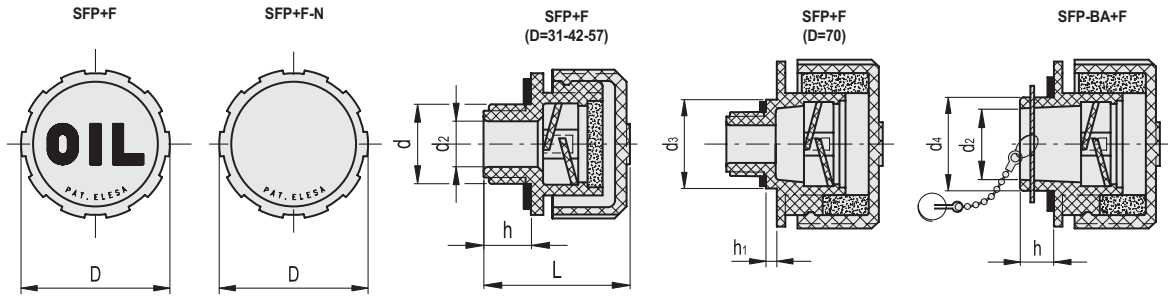


SFP+F-FIL-N

Code	Description	D	d	L	d2	h	⚖
54151-C2-N	SFP.30-12x1.5+F FIL-C2-N	31	M12x1.5	29.5	6	9.5	10
54151-C9-N	SFP.30-12x1.5+F FIL-C9-N	31	M12x1.5	29.5	6	9.5	10
54171-C2-N	SFP.30-14x1.5+F FIL-C2-N	31	M14x1.5	29.5	8	9.5	10
54171-C9-N	SFP.30-14x1.5+F FIL-C9-N	31	M14x1.5	29.5	8	9.5	10
53951-C2-N	SFP.30-16x1.5+F FIL-C2-N	31	M16x1.5	29.5	10	9.5	13
53951-C9-N	SFP.30-16x1.5+F FIL-C9-N	31	M16x1.5	29.5	10	9.5	13
53971-C2-N	SFP.30-18x1.5+F FIL-C2-N	31	M18x1.5	29.5	10	9.5	14
53971-C9-N	SFP.30-18x1.5+F FIL-C9-N	31	M18x1.5	29.5	10	9.5	14
53986-C2-N	SFP.30-20x1.5+F FIL-C2-N	31	M20x1.5	29.5	12	9.5	14
53986-C9-N	SFP.30-20x1.5+F FIL-C9-N	31	M20x1.5	29.5	12	9.5	14
53996-C2-N	SFP.30-22x1.5+F FIL-C2-N	31	M22x1.5	29.5	12	9.5	16
53996-C9-N	SFP.30-22x1.5+F FIL-C9-N	31	M22x1.5	29.5	12	9.5	16
53937-C2-N	SFP.30-1/4+F FIL-C2-N	31	G1/4	29.5	8	9.5	13
53937-C9-N	SFP.30-1/4+F FIL-C9-N	31	G1/4	29.5	8	9.5	13
54021-C2-N	SFP.30-3/8+F FIL-C2-N	31	G3/8	29.5	10	9.5	13
54021-C9-N	SFP.30-3/8+F FIL-C9-N	31	G3/8	29.5	10	9.5	13
54121-C2-N	SFP.30-1/2+F FIL-C2-N	31	G1/2	29.5	12	9.5	14
54121-C9-N	SFP.30-1/2+F FIL-C9-N	31	G1/2	29.5	12	9.5	14
56661-C2-N	SFP.40-3/8+F FIL-C2-N	42	G3/8	36.5	10	11.5	28
56661-C9-N	SFP.40-3/8+F FIL-C9-N	42	G3/8	36.5	10	11.5	28
56681-C2-N	SFP.40-1/2+F FIL-C2-N	42	G1/2	36.5	12	11.5	29
56681-C9-N	SFP.40-1/2+F FIL-C9-N	42	G1/2	36.5	12	11.5	29
54221-C2-N	SFP.40-3/4+F FIL-C2-N	42	G3/4	36.5	18	11.5	30
54221-C9-N	SFP.40-3/4+F FIL-C9-N	42	G3/4	36.5	18	11.5	30
54321-C2-N	SFP.40-1+F FIL-C2-N	42	G1	36.5	18	11.5	32
54321-C9-N	SFP.40-1+F FIL-C9-N	42	G1	36.5	18	11.5	32
56711-C2-N	SFP.57-3/4+F FIL-C2-N	57	G3/4	42	18	14	51
56711-C9-N	SFP.57-3/4+F FIL-C9-N	57	G3/4	42	18	14	51
56741-C2-N	SFP.57-1+F FIL-C2-N	57	G1	42	23	14	52
56741-C9-N	SFP.57-1+F FIL-C9-N	57	G1	42	23	14	52
54421-C2-N	SFP.57-1¼+F FIL-C2-N	57	G1¼	44	28	16	55
54421-C9-N	SFP.57-1¼+F FIL-C9-N	57	G1¼	44	28	16	55
54521-C2-N	SFP.57-1½+F FIL-C2-N	57	G1½	44	28	16	56
54521-C9-N	SFP.57-1½+F FIL-C9-N	57	G1½	44	28	16	56

Types available on request with NPT thread (National Taper Pipe Thread - ANSI-ASME B1-20).

Accessories for hydraulic systems 15

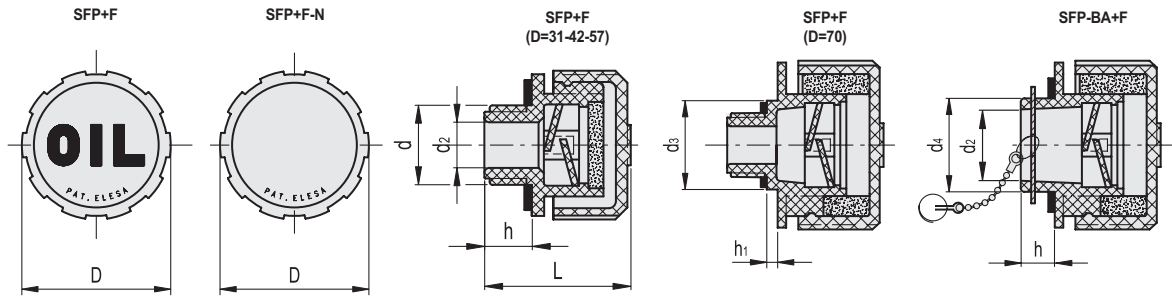


SFP+F-FOAM

Code	Description	D	d	L	d2	d3	h	h1	⚖️
54152	SFP.30-12x1.5+F FOAM	31	M12x1.5	29.5	6	-	9.5	-	10
54152-C9	SFP.30-12x1.5+F FOAM-C9	31	M12x1.5	29.5	6	-	9.5	-	10
54172	SFP.30-14x1.5+F FOAM	31	M14x1.5	29.5	8	-	9.5	-	10
54172-C9	SFP.30-14x1.5+F FOAM-C9	31	M14x1.5	29.5	8	-	9.5	-	10
53952	SFP.30-16x1.5+F FOAM	31	M16x1.5	29.5	10	-	9.5	-	11
53952-C9	SFP.30-16x1.5+F FOAM-C9	31	M16x1.5	29.5	10	-	9.5	-	11
53972	SFP.30-18x1.5+F FOAM	31	M18x1.5	29.5	10	-	9.5	-	12
53972-C9	SFP.30-18x1.5+F FOAM-C9	31	M18x1.5	29.5	10	-	9.5	-	12
53987	SFP.30-20x1.5+F FOAM	31	M20x1.5	29.5	12	-	9.5	-	12
53987-C9	SFP.30-20x1.5+F FOAM-C9	31	M20x1.5	29.5	12	-	9.5	-	12
53997	SFP.30-22x1.5+F FOAM	31	M22x1.5	29.5	12	-	9.5	-	13
53997-C9	SFP.30-22x1.5+F FOAM-C9	31	M22x1.5	29.5	12	-	9.5	-	13
53938	SFP.30-1/4+F FOAM	31	G1/4	29.5	8	-	9.5	-	11
53938-C9	SFP.30-1/4+F FOAM-C9	31	G1/4	29.5	8	-	9.5	-	11
54022	SFP.30-3/8+F FOAM	31	G3/8	29.5	10	-	9.5	-	12
54022-C9	SFP.30-3/8+F FOAM-C9	31	G3/8	29.5	10	-	9.5	-	12
54122	SFP.30-1/2+F FOAM	31	G1/2	29.5	12	-	9.5	-	12
54122-C9	SFP.30-1/2+F FOAM-C9	31	G1/2	29.5	12	-	9.5	-	12
56662	SFP.40-3/8+F FOAM#	42	G3/8	36.5	10	-	11.5	-	22
56662-C9	SFP.40-3/8+F FOAM-C9#	42	G3/8	36.5	10	-	11.5	-	22
56682	SFP.40-1/2+F FOAM#	42	G1/2	36.5	12	-	11.5	-	24
56682-C9	SFP.40-1/2+F FOAM-C9#	42	G1/2	36.5	12	-	11.5	-	24
54222	SFP.40-3/4+F FOAM#	42	G3/4	36.5	18	-	11.5	-	24
54222-C9	SFP.40-3/4+F FOAM-C9#	42	G3/4	36.5	18	-	11.5	-	24
54322	SFP.40-1+F FOAM	42	G1	36.5	18	-	11.5	-	27
54322-C9	SFP.40-1+F FOAM-C9	42	G1	36.5	18	-	11.5	-	27
56712	SFP.57-3/4+F FOAM#	57	G3/4	42	18	-	14	-	43
56712-C9	SFP.57-3/4+F FOAM-C9#	57	G3/4	42	18	-	14	-	43
56742	SFP.57-1+F FOAM	57	G1	42	23	-	14	-	43
56742-C9	SFP.57-1+F FOAM-C9	57	G1	42	23	-	14	-	43
54422	SFP.57-1¼+F FOAM	57	G1¼	44	28	-	16	-	47
54422-C9	SFP.57-1¼+F FOAM-C9	57	G1¼	44	28	-	16	-	47
54522	SFP.57-1½+F FOAM	57	G1½	44	28	-	16	-	47
54522-C9	SFP.57-1½+F FOAM-C9	57	G1½	44	28	-	16	-	47
54851	SFP.70-3/4+F FOAM#	70	G3/4	63	16	35	15	6	80
54851-C9	SFP.70-3/4+F FOAM-C9#	70	G3/4	63	16	35	15	6	80
54861	SFP.70-1¼+F FOAM	70	G1¼	59	23	-	17	-	83
54861-C9	SFP.70-1¼+F FOAM-C9	70	G1¼	59	23	-	17	-	83
54878	SFP.70-2+F FOAM	70	G2	59	23	-	17	-	88
54878-C9	SFP.70-2+F FOAM-C9	70	G2	59	23	-	17	-	88

Types available on request with NPT thread (National Taper Pipe Thread - ANSI-ASME B1-20).





SFP+F-FOAM-N

Code	Description	D	d	L	d2	d3	h	h1	⚖
54152-C2-N	SFP.30-12x1.5+F FOAM-C2-N	31	M12x1.5	29.5	6	-	9.5	-	10
54152-C9-N	SFP.30-12x1.5+F FOAM-C9-N	31	M12x1.5	29.5	6	-	9.5	-	10
54172-C2-N	SFP.30-14x1.5+F FOAM-C2-N	31	M14x1.5	29.5	8	-	9.5	-	10
54172-C9-N	SFP.30-14x1.5+F FOAM-C9-N	31	M14x1.5	29.5	8	-	9.5	-	10
53952-C2-N	SFP.30-16x1.5+F FOAM-C2-N	31	M16x1.5	29.5	10	-	9.5	-	11
53952-C9-N	SFP.30-16x1.5+F FOAM-C9-N	31	M16x1.5	29.5	10	-	9.5	-	11
53972-C2-N	SFP.30-18x1.5+F FOAM-C2-N	31	M18x1.5	29.5	10	-	9.5	-	12
53972-C9-N	SFP.30-18x1.5+F FOAM-C9-N	31	M18x1.5	29.5	10	-	9.5	-	12
53987-C2-N	SFP.30-20x1.5+F FOAM-C2-N	31	M20x1.5	29.5	12	-	9.5	-	12
53987-C9-N	SFP.30-20x1.5+F FOAM-C9-N	31	M20x1.5	29.5	12	-	9.5	-	12
53997-C2-N	SFP.30-22x1.5+F FOAM-C2-N	31	M22x1.5	29.5	12	-	9.5	-	13
53997-C9-N	SFP.30-22x1.5+F FOAM-C9-N	31	M22x1.5	29.5	12	-	9.5	-	13
53938-C2-N	SFP.30-1/4+F FOAM-C2-N	31	G1/4	29.5	8	-	9.5	-	11
53938-C9-N	SFP.30-1/4+F FOAM-C9-N	31	G1/4	29.5	8	-	9.5	-	11
54022-C2-N	SFP.30-3/8+F FOAM-C2-N	31	G3/8	29.5	10	-	9.5	-	12
54022-C9-N	SFP.30-3/8+F FOAM-C9-N	31	G3/8	29.5	10	-	9.5	-	12
54122-C2-N	SFP.30-1/2+F FOAM-C2-N	31	G1/2	29.5	12	-	9.5	-	12
54122-C9-N	SFP.30-1/2+F FOAM-C9-N	31	G1/2	29.5	12	-	9.5	-	12
56662-C2-N	SFP.40-3/8+F FOAM-C2-N#	42	G3/8	36.5	10	-	11.5	-	22
56662-C9-N	SFP.40-3/8+F FOAM-C9-N#	42	G3/8	36.5	10	-	11.5	-	22
56682-C2-N	SFP.40-1/2+F FOAM-C2-N#	42	G1/2	36.5	12	-	11.5	-	24
56682-C9-N	SFP.40-1/2+F FOAM-C9-N#	42	G1/2	36.5	12	-	11.5	-	24
54222-C2-N	SFP.40-3/4+F FOAM-C2-N#	42	G3/4	36.5	18	-	11.5	-	24
54222-C9-N	SFP.40-3/4+F FOAM-C9-N#	42	G3/4	36.5	18	-	11.5	-	24
54322-C2-N	SFP.40-1+F FOAM-C2-N	42	G1	36.5	18	-	11.5	-	27
54322-C9-N	SFP.40-1+F FOAM-C9-N	42	G1	36.5	18	-	11.5	-	27
56712-C2-N	SFP.57-3/4+F FOAM-C2-N#	57	G3/4	42	18	-	14	-	43
56712-C9-N	SFP.57-3/4+F FOAM-C9-N#	57	G3/4	42	18	-	14	-	43
56742-C2-N	SFP.57-1+F FOAM-C2-N	57	G1	42	23	-	14	-	43
56742-C9-N	SFP.57-1+F FOAM-C9-N	57	G1	42	23	-	14	-	43
54422-C2-N	SFP.57-1¼+F FOAM-C2-N	57	G1¼	44	28	-	16	-	47
54422-C9-N	SFP.57-1¼+F FOAM-C9-N	57	G1¼	44	28	-	16	-	47
54522-C2-N	SFP.57-1½+F FOAM-C2-N	57	G1½	44	28	-	16	-	47
54522-C9-N	SFP.57-1½+F FOAM-C9-N	57	G1½	44	28	-	16	-	47
54851-C2-N	SFP.70-3/4+F FOAM-C2-N#	70	G3/4	63	16	35	15	6	80
54851-C9-N	SFP.70-3/4+F FOAM-C9-N#	70	G3/4	63	16	35	15	6	80
54861-C2-N	SFP.70-1¼+F FOAM-C2-N	70	G1¼	59	23	-	17	-	83
54861-C9-N	SFP.70-1¼+F FOAM-C9-N	70	G1¼	59	23	-	17	-	83
54878-C2-N	SFP.70-2+F FOAM-C2-N	70	G2	59	23	-	17	-	88
54878-C9-N	SFP.70-2+F FOAM-C9-N	70	G2	59	23	-	17	-	88

Types available on request with NPT thread (National Taper Pipe Thread - ANSI-ASME B1-20).

SFP-BA+F

Code	Description	D	L	d2	d4	h	⚖
54881	SFP.70-BA+F FOAM	70	56	30	39	14	93
54881-C9	SFP.70-BA+F FOAM-C9	70	56	30	39	14	93

SFP-BA+F-N

Code	Description	D	L	d2	d4	h	⚖
54881-C2-N	SFP.70-BA+F FOAM-C2-N	70	56	30	39	14	93
54881-C9-N	SFP.70-BA+F FOAM-C9-N	70	56	30	39	14	93