

Hinged joint with mounting base and clamp

Technopolymer

CLAMP AND BASE

Glass-fibre reinforced polyamide based (PA) technopolymer, RAL 9005 (C9) black colour or grey RAL 7040 (C33) colour, resistant to UV rays, matte finish.

SCREWS AND NUTS (SUPPLIED)

Cylindrical-head screw with hexagon socket in AISI 304 stainless steel with anti-seizure treatment.

Self-locking nuts in AISI 304 stainless steel.

STANDARD EXECUTIONS

- TCC-TP-PB-T: with teeth.
- TCC-TP-PB-S: without teeth.

FEATURES

Joints comprising bases with external teeth and clamps with internal teeth (36 teeth) have a 10° adjustment angle.

Joints comprising bases and clamps without teeth can be positioned at any angle.

Clamps for tubes with a diameter of 30 ± 0.2 mm.

For smaller diameter tubes, the hole reduction sleeve can be used TCC-A (to be ordered separately).

The "s" grub screws may be replaced by the kit TCC-KS.

TECHNICAL DATA

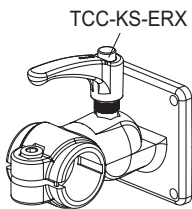
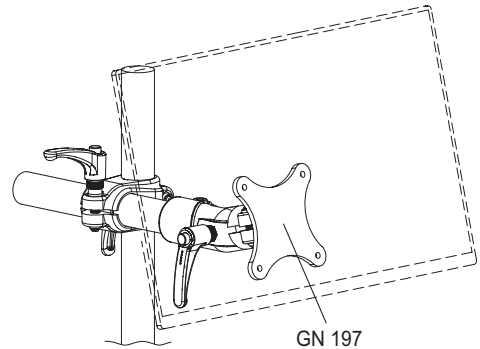
The resistance values shown in the table were measured during laboratory tests at ambient temperature with the screws tightened to the suggested torque "C#".

ACCESSORIES ON REQUEST (TO BE ORDERED SEPARATELY)

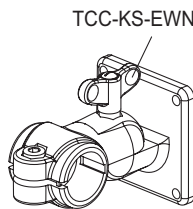
- TCC-A: reduction sleeves.
- TCC-KS: clamping kit.
- GN 197: monitor mounts.
- TCC-KV: screws and clamping nuts.
- GN 990: connecting tubes.



ELESA Original design



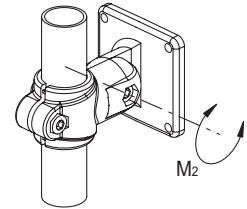
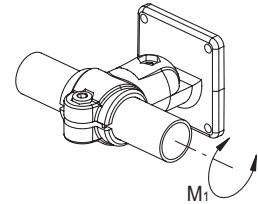
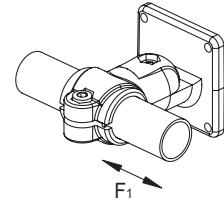
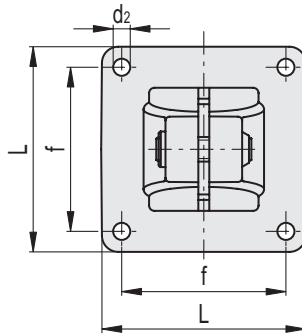
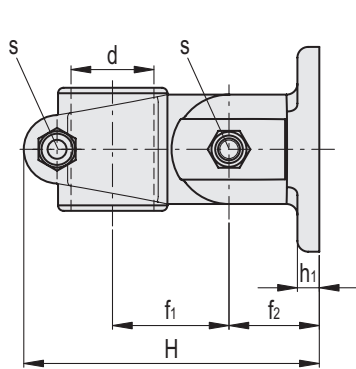
TCC-KS-ERX



TCC-KS-EWN



Tube connectors 16



C9 RAL9005 C33 RAL7040

TCC-TP-PB-T

STAINLESS STEEL

Code	Description	d	L	H	d2	f ±0.2	f1	f2	h1	s	C# [Nm]	F1* [N]	M1** [Nm]	M2*** [Nm]	⚖
600741-C9	TCC-TP-PB-18-T-C9	18	45	70.5	5.5	30	28.5	20	5	M6	5	1100	11	35	55
600741-C33	TCC-TP-PB-18-T-C33	18	45	70.5	5.5	30	28.5	20	5	M6	5	1100	11	35	55
600841-C9	TCC-TP-PB-30-T-C9	30	75	107	6.5	60	42	33	7.5	M8	12	3000	33	100	165
600841-C33	TCC-TP-PB-30-T-C33	30	75	107	6.5	60	42	33	7.5	M8	12	3000	33	100	165

TCC-TP-PB-S

STAINLESS STEEL

Code	Description	d	L	H	d2	f ±0.2	f1	f2	h1	s	C# [Nm]	F1* [N]	M1** [Nm]	M2*** [Nm]	⚖
600742-C9	TCC-TP-PB-18-S-C9	18	45	70.5	5.5	30	28.5	20	5	M6	5	1100	11	3	55
600742-C33	TCC-TP-PB-18-S-C33	18	45	70.5	5.5	30	28.5	20	5	M6	5	1100	11	3	55
600842-C9	TCC-TP-PB-30-S-C9	30	75	107	6.5	60	42	33	7.5	M8	12	3000	33	4	165
600842-C33	TCC-TP-PB-30-S-C33	30	75	107	6.5	60	42	33	7.5	M8	12	3000	33	4	165

Suggested torque for screw assembly.

* Resistance to tube pull out

** Resistance to tube rotation

*** Resistance to joint rotation.