

Connecting clamps with connector for profiles

Technopolymer and aluminium

HANDLE SHANKS

Glass-fibre reinforced polyamide based (PA) technopolymer, RAL 9005 (C9) black colour or grey RAL 7040 (C33) colour, matte finish. Supplied assembled.
The handle shank connection to the tube avoids tube rotation.

TUBE

Anodised aluminium, natural colour.

CONNECTING CLAMP

Glass-fibre reinforced polyamide based (PA) technopolymer, RAL 9005 (C9) black colour or grey RAL 7040 (C33) colour, matte finish. Cylindrical-head screw with hexagon socket in AISI 304 stainless steel with anti-seizure treatment. Self-locking nuts in AISI 304 stainless steel. Supplied assembled.

STANDARD EXECUTIONS

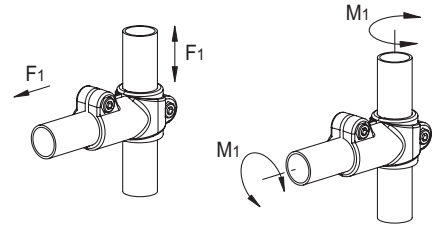
Pass-through holes for cylindrical-head screws with hexagon socket.
- **TCC-TS-PR-1**: one connecting clamp.
- **TCC-TS-PR-2**: two connecting clamps.

FEATURES AND APPLICATIONS

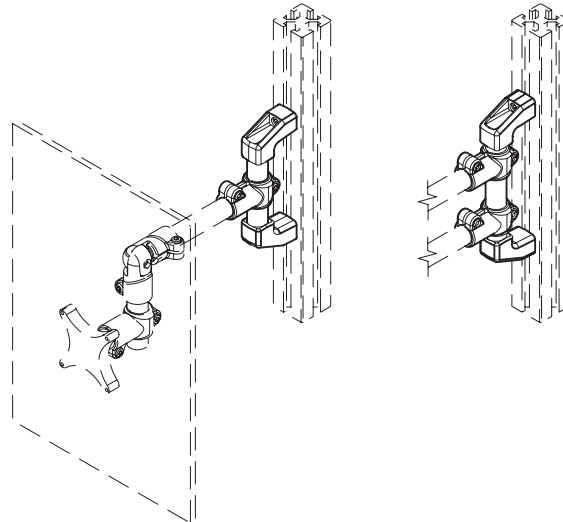
The clamps enable various types of assembly (see examples).

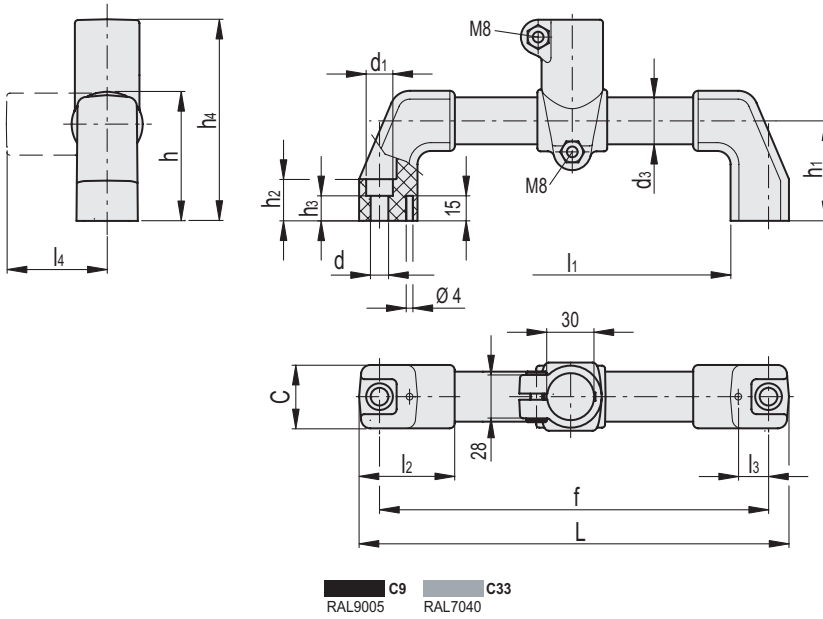
TECHNICAL DATA

Pull-out and rotational resistance: the F1 and M1 values shown in the table were measured using special dynamometer apparatus by tightening the screws to the recommended torque "C#" under the test conditions shown and at room temperature.



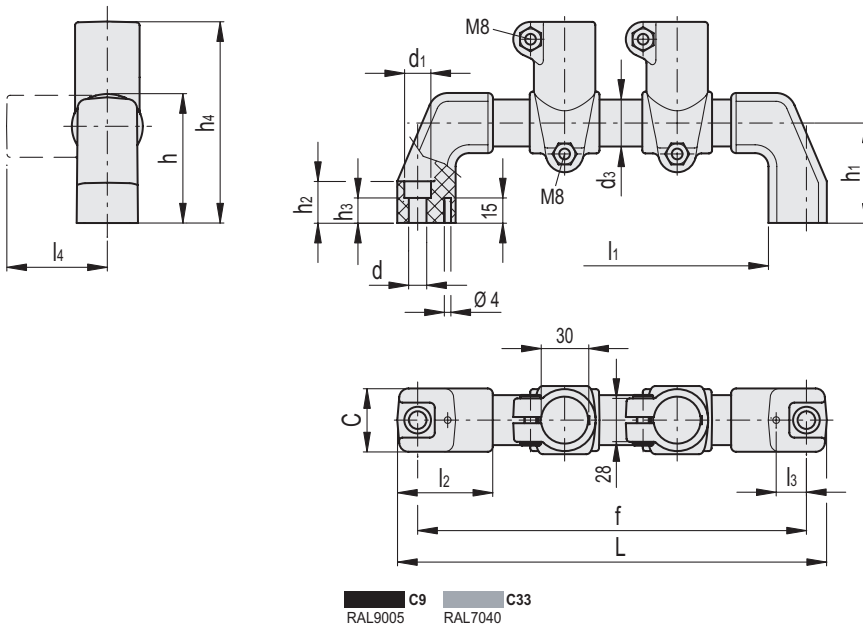
Application examples





TCC-TS-PR-1

Code	Description	d	L	C	d ₁	d ₃	f _{±1}	h	h ₁	h ₂	h ₃	h ₄	l ₁	l ₂	l ₃	l ₄	C#	F1* [Nm]	M1** [Nm]	⚖️
600907-C9	TCC-TS-30-PR-1-C9	8.5	224	38	13.5	30	200	82	60	25	14.5	124.5	154	57	18	64.5	12	1650	17	347
600907-C33	TCC-TS-30-PR-1-C33	8.5	224	38	13.5	30	200	82	60	25	14.5	124.5	154	57	18	64.5	12	1650	17	347



TCC-TS-PR-2

Code	Description	d	L	C	d ₁	d ₃	f _{±1}	h	h ₁	h ₂	h ₃	h ₄	l ₁	l ₂	l ₃	l ₄	C#	F1* [Nm]	M1** [Nm]	⚖️
600910-C9	TCC-TS-30-PR-2-C9	8.5	274	38	13.5	30	250	82	60	25	14.5	124.5	204	57	18	64.5	12	1650	17	461
600910-C33	TCC-TS-30-PR-2-C33	8.5	274	38	13.5	30	250	82	60	25	14.5	124.5	204	57	18	64.5	12	1650	17	461

Recommended torque for clamp screw tightening.
 * Resistance to tube pull out.
 ** Resistance to tube rotation.

