

Closing cap for GLA and GCA guides

MATERIAL

Polyamide-based (PA) technopolymer, grey colour.

SCREW AND NUT

AISI 304 stainless steel.

FEATURES AND APPLICATIONS

TGL closing cap is used at the ends of GLA side guides (Fig.1) and GCA central guides (Fig.2).

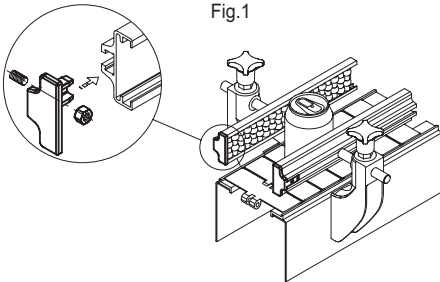


Fig.1

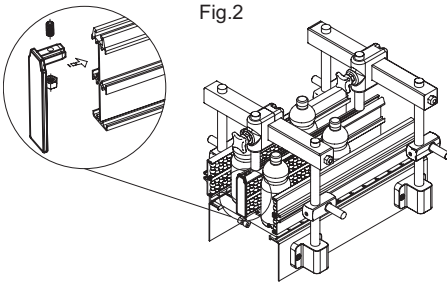
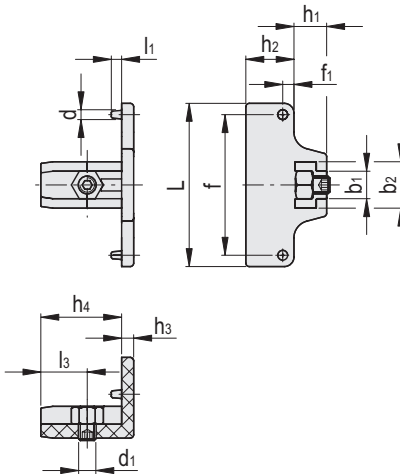


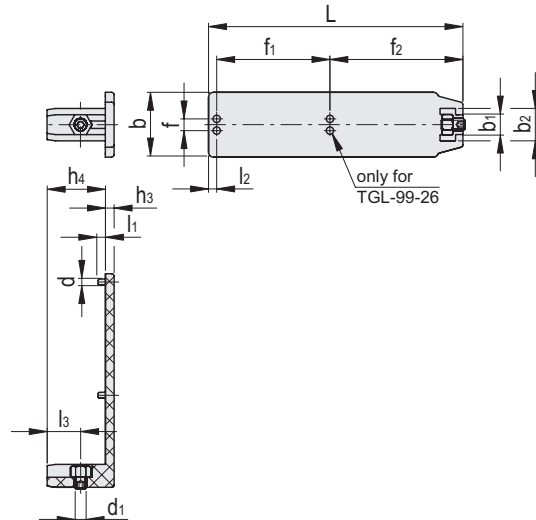
Fig.2



TGL-24-48
TGL-24-93



TGL-57-26
TGL-99-26



STAINLESS STEEL

Code	Description	d	d1	f1	L	f	f2	b	b1	b2	h1	h2	h3	h4	l1	l2	l3	⚖
419143	TGL-24-48	2.5	M5	3.2	47.5	40.9	-	-	8	13.5	9.5	14	3.5	23.5	3	-	13.5	10
419144	TGL-24-93	2.5	M5	3.2	93	86	-	-	8	13	9.5	14	3.5	23.5	3	-	13.5	16
419142	TGL-57-26	2.5	M5	-	57.4	4.7	-	26.2	8	13	-	-	3.5	23.5	3	3.3	13.5	11
419140	TGL-99-26	2.5	M5	45.7	102.7	4.7	53.7	26.2	8	13	-	-	3.5	23.5	3	3.3	13.5	17