

Four-arm handwheels

Technopolymer and steel

MATERIAL

Glass-fibre reinforced polyamide based (PA) technopolymer, black colour, glossy finish.

ARMS

Matte chrome-plated steel complete with handles type I.622 (see page 535) in technopolymer.

STANDARD EXECUTION

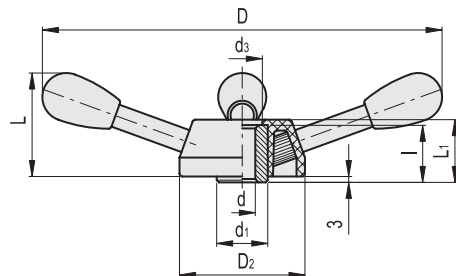
Black-oxide steel boss, uncovered front end with pre-drilled pass-through hole.

ACCESSORIES ON REQUEST

Axial retaining washer GN 184 (see page 971).



ELESA Original design



| Code | Description | D | dH9 | L | L1 | D2 | d1 | d3 | I | C# [Nm] | |
|-------|-------------|-----|-----|----|----|----|----|----|----|------------|------|
| 65901 | VBR.4/200 | 200 | 10 | 60 | 42 | 86 | 35 | 34 | 38 | 195 | 780 |
| 65911 | VBR.4/280 | 274 | 10 | 74 | 42 | 86 | 35 | 34 | 38 | 195 | 1030 |
| 65921 | VBR.4/320 | 312 | 10 | 80 | 42 | 86 | 35 | 34 | 38 | 195 | 1150 |
| 65931 | VBR.4/370 | 363 | 10 | 90 | 42 | 86 | 35 | 34 | 38 | 195 | 1315 |

For maximum applicable torque (C) and impact strength (L) see Technical Data on page A3.



Operating elements 1