

## Solid handwheels

### Technopolymer

#### MATERIAL

Glass-fibre reinforced polyamide based (PA) technopolymer, black colour, matte finish.

#### BOSS CAP

Acetal resin based (POM) technopolymer, black colour, matte finish, push-fit assembly.

#### RING

Matte anodised aluminium.  
(ELESA original design - Reg. U.S. Pat. & TM Off.)

#### STANDARD EXECUTIONS

Black-oxide steel boss, H7 reamed hole.  
H9 reamed hole for executions with keyway.  
- **VDT.**: without handle.  
- **VDT+I**: with revolving handle I.621+x (see page 576) in technopolymer.  
- **VDT+IR**: with fold-away handle IR.620 (see page 584) in technopolymer.  
- **K**: index for executions with hole and keyway in compliance with DIN 6885/1 (see page A-16), tolerance P9 i.e.:  
170307-K VDT.100 A-10-K

#### ACCESSORIES ON REQUEST

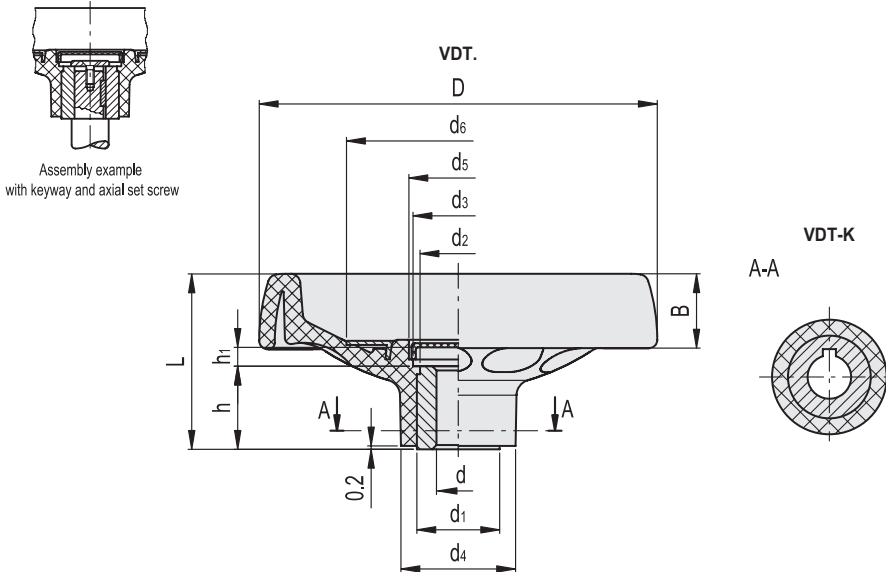
Axial retaining washer type GN 184 (see page 971).

#### ERGONOMY

The rim with internal rear scallops makes the grip and the manoeuvre of the handwheel easier.



ELESA Original design **2003**

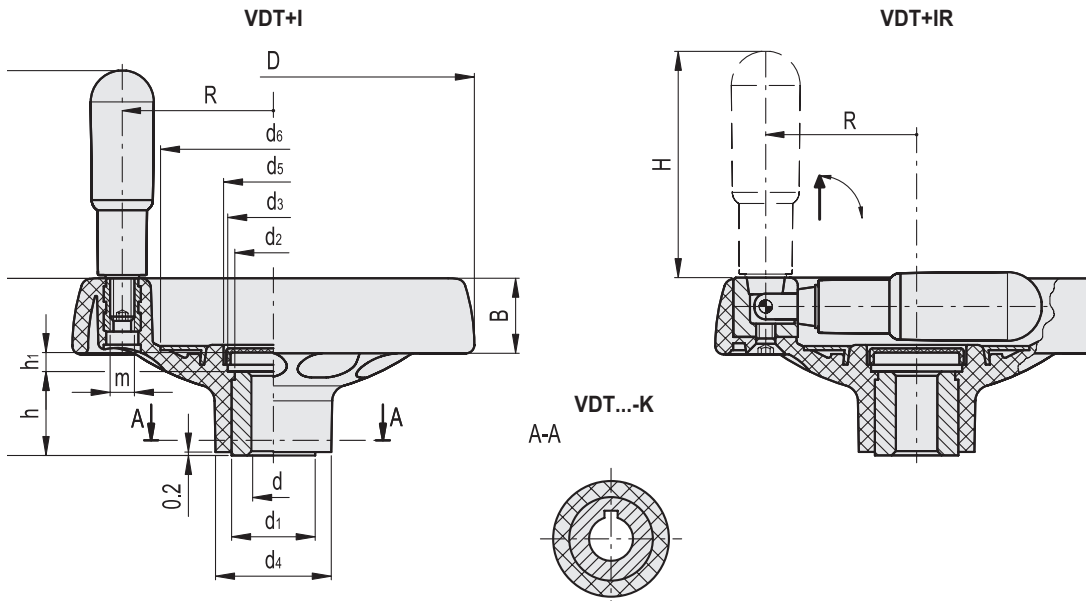


#### VDT.

Code*	Description*	D	dh7	L	B	d1	d2	d3	d4	d5	d6	h	h1	C# [Nm]	L# [J]	
170307	VDT.100 A-10	100	10	49	22	22	20	26	32	28	54	22	5.5	180	21	155
170505	VDT.125 A-12	125	12	57	24	26	24	28	36	31	70	27	7	200	23	285
170707	VDT.160 A-14	160	14	64	27	35	33	38	46	40	90	28	11	400	25	505
170907	VDT.200 A-20	200	20	68	30	40	38	50	51	52	110	31	9	600	35	730

\* To order the execution with hole and keyway add the index -K after the code and description (i.e. 79111-R-K VRTP.80-P+I-SST-8-K).

# For maximum torque (C) and impact strength (L) see Technical Data on page A3.



VDT+I

Code*	Description*	D	dH7	L	B	d1	d2	d3	d4	d5	d6	h	h1	H	m	R	C# [Nm]	L# [J]	⚖️
170317	VDT.100+I A-10	100	10	49	22	22	20	26	32	28	54	22	5.5	60	M6	37	180	21	185
170515	VDT.125+I A-12	125	12	57	24	26	24	28	36	31	70	27	7	65	M8	47	200	23	355
170717	VDT.160+I A-14	160	14	64	27	35	33	38	46	40	90	28	11	80	M8	62	400	25	585
170917	VDT.200+I A-20	200	20	68	30	40	38	50	51	52	110	31	9	90	M10	78	600	35	820

VDT+IR

Code	Description	D	dH7	L	B	d1	d2	d3	d4	d5	d6	h	h1	H	R	C# [Nm]	L# [J]	⚖️
170327	VDT.100+IR A-10	100	10	49	22	22	20	26	32	28	54	22	5.5	60	37	180	21	195
170525	VDT.125+IR A-12	125	12	57	24	26	24	28	36	31	70	27	7	65	47	200	23	365
170725	VDT.160+IR A-12	160	12	64	27	35	33	38	46	40	90	28	11	80	62	400	25	605
170727	VDT.160+IR A-14	160	14	64	27	35	33	38	46	40	90	28	11	80	62	400	25	600
170927	VDT.200+IR A-20	200	20	68	30	40	38	50	51	52	110	31	9	90	78	600	35	875

\* To order the execution with hole and keyway add the index -K after the code and description (i.e. 79111-R-K VRTP.80-P+I-SST-8-K).

# For maximum torque (C) and impact strength (L) see Technical Data on page A3.

