

Solid knobs

Visually Detectable technopolymer, easy cleaning

MATERIAL

Glass-fibre reinforced polyamide based (PA) technopolymer, RAL 5005 blue colour, matte finish.

Produced from FDA compliant raw material (FDA CFR.21 and EU 10/2011).

STANDARD EXECUTIONS

- **VTT-SST-VD**: AISI 304 stainless steel boss, threaded blind hole.
- **VTT-SST-p-VD**: AISI 304 stainless steel threaded stud, chamfered flat end according to UNI 947 : ISO 4753 (see Technical data on page).

FEATURES AND APPLICATIONS

The RAL 5005 blue colour is easily visible in case of accidental food contamination.

Particularly suitable for applications in the food and pharmaceutical industries.

The three-lobe shape with large recesses ensures an effective grip even with work gloves.

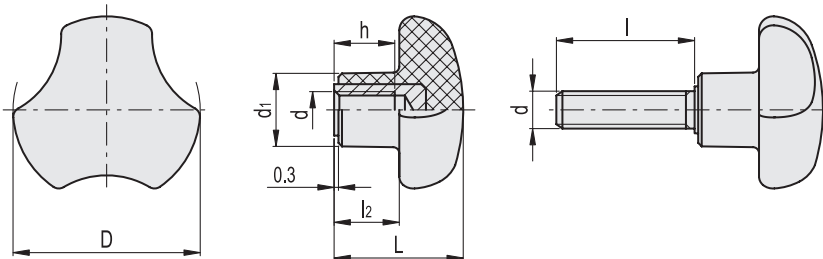
The design without rear cavities, generally adopted for reducing thickness, prevents unhealthy residues from depositing, ensuring easy cleaning. Particularly suitable for applications on machines and equipment whose parts must be frequently cleaned by using water jets or steam.



ELESA Original design

VTT-SST-VD

VTT-SST-p-VD



VTT-SST-VD

STAINLESS STEEL

Code	Description	D	d6H	L	d1	l2	h	△△
190226	VTT.32-SST-M6-VD	32	M6	23	14	11.5	10	14
190346	VTT.40-SST-M8-VD	40	M8	27	16	13.5	13	23
190476	VTT.50-SST-M10-VD	50	M10	30	19	15	17	36

VTT-SST-p-VD

STAINLESS STEEL

Code	Description	D	d6g	L	d1	l	l2	△△
190262	VTT.32-SST-p-M6x16-VD	32	M6	23	14	16	11.5	16
190263	VTT.32-SST-p-M6x20-VD	32	M6	23	14	20	11.5	17
190381	VTT.40-SST-p-M8x20-VD	40	M8	27	16	20	13.5	28
190383	VTT.40-SST-p-M8x30-VD	40	M8	27	16	30	13.5	30
190493	VTT.50-SST-p-M10x30-VD	50	M10	30	19	30	15	47
190495	VTT.50-SST-p-M10x40-VD	50	M10	30	19	40	15	52