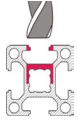


Anchor connector

Material: nickel plated steel.

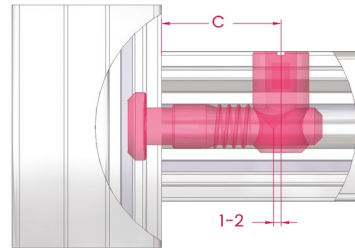
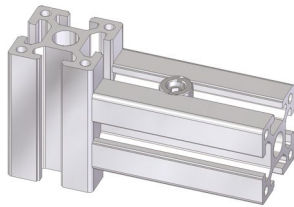
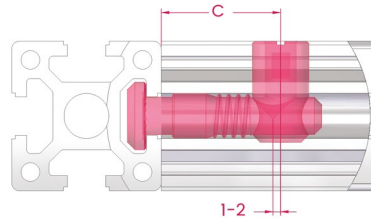
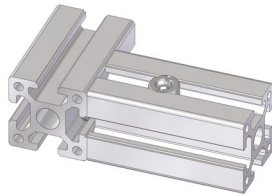
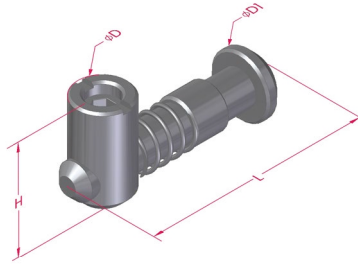
- Universal



Conector âncora

Material: aço niquelado.

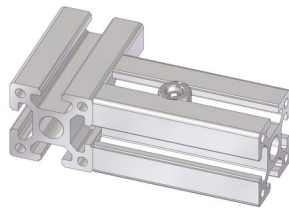
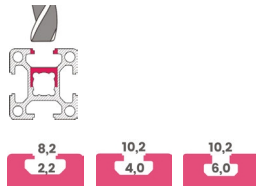
- Universal



Description Descrição	Code Referência	C	ØD	H	ØD1	L	Mass (g) Massa
Universal anchor connector – 30 profile Conector âncora universal – perfil 30	CAC30UN	30	12	21	14	45	39
Universal anchor connector – 40 profile Conector âncora universal – perfil 40	CAC40UN	32	15	27	18	52	62
Universal anchor connector – 45 profile Conector âncora universal – perfil 45	CAC45UN	30		29,5			64

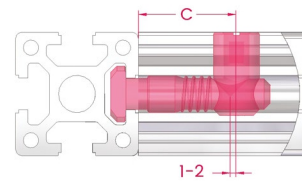
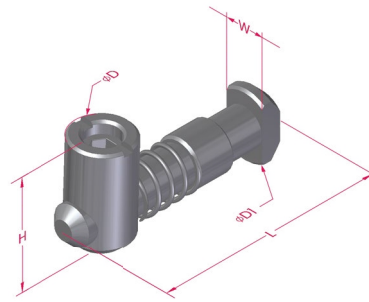
Anchor connector

- In-line T version



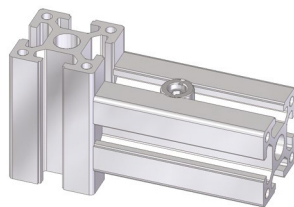
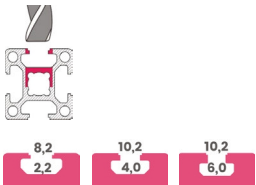
Conector âncora

- Versão T em linha

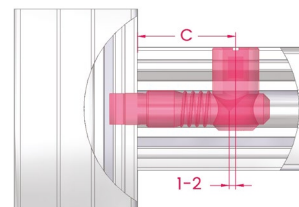
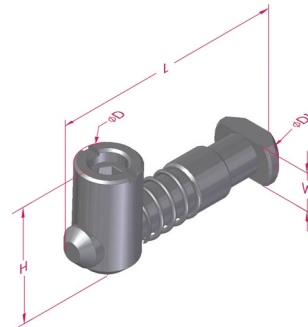


Description <i>Descrição</i>	Code <i>Referência</i>	C	ØD	H	ØD1	L	W	Mass (g) <i>Massa</i>
In-line T anchor connector – 30 profile <i>Conector âncora T em linha – perfil 30</i>	CAC30TL	30	12	21	14	45	8	38
In-line T anchor connector – 40 profile <i>Conector âncora T em linha – perfil 40</i>	CAC40TL	32	15	27	18	52	10	58
In-line T anchor connector – 45 profile <i>Conector âncora T em linha – perfil 45</i>	CAC45TL	30		29,5				60

- Cross T version



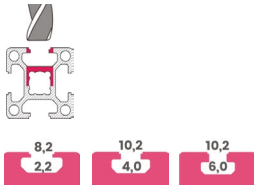
- Versão T cruzado



Description <i>Descrição</i>	Code <i>Referência</i>	C	ØD	H	ØD1	L	W	Mass (g) <i>Massa</i>
Cross T anchor connector – 30 profile <i>Conector âncora T cruzado – perfil 30</i>	CAC30TC	30	12	21	14	45	8	38
Cross T anchor connector – 40 profile <i>Conector âncora T cruzado – perfil 40</i>	CAC40TC	32	15	27	18	52	10	58
Cross T anchor connector – 45 profile <i>Conector âncora T cruzado – perfil 45</i>	CAC45TC	30		29,5				60

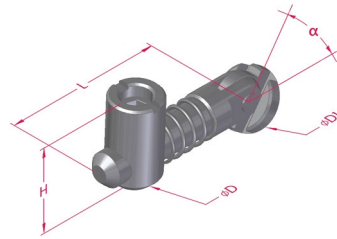
Anchor connector

- In-line angular version

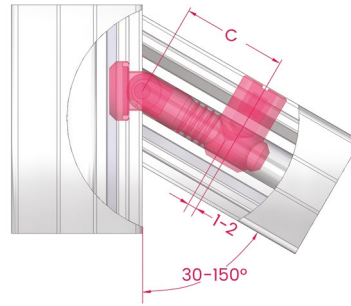
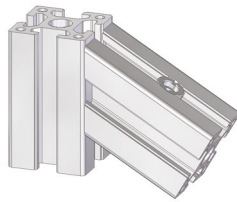


Conector âncora

- Cabeça angular em linha

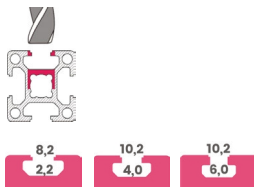


$-60^\circ < \alpha < 60^\circ$

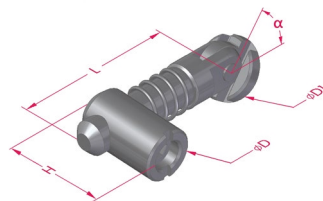


Description Descrição	Code Referência	C	ØD	H	ØD1	L	Mass (g) Massa
In-line angular anchor connector – 30 profile <i>Conetor âncora cabeça angular em linha – perfil 30</i>	CAC30OL	30	12	21	14	38,8	55
In-line angular anchor connector – 40 profile <i>Conetor âncora cabeça angular em linha – perfil 40</i>	CAC40OL	32	15	27	18	43	72
In-line angular anchor connector – 45 profile <i>Conetor âncora cabeça angular em linha – perfil 45</i>	CAC45OL			29,5			78

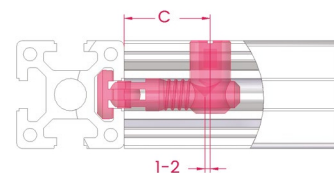
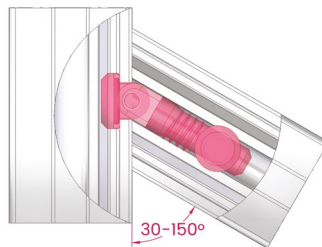
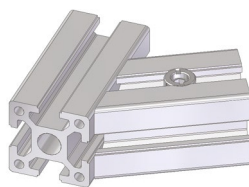
- Cross angular version



- Cabeça angular cruzada

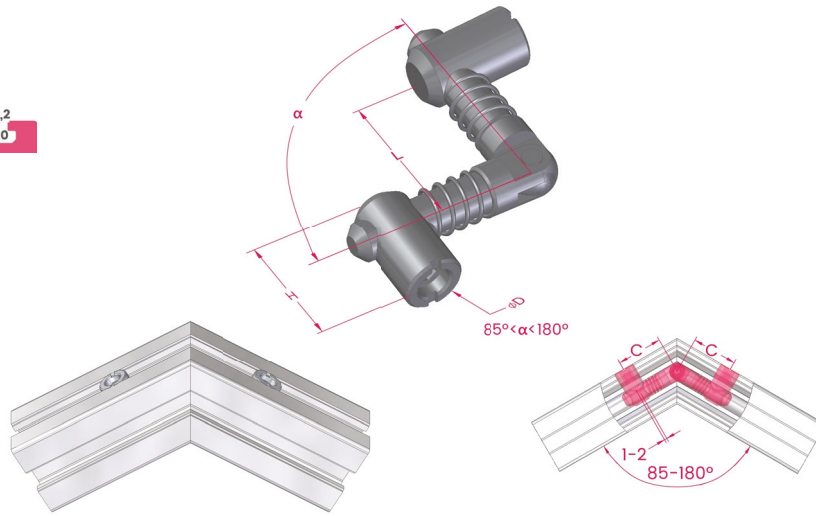
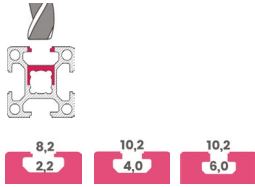


$-60^\circ < \alpha < 60^\circ$



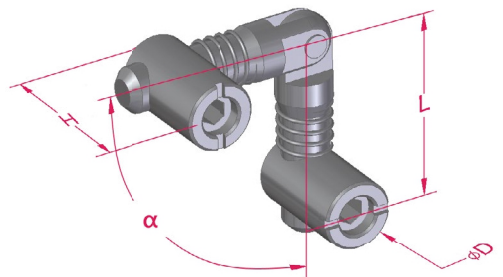
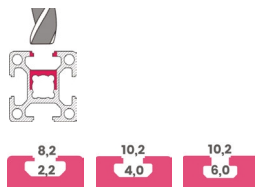
Description Descrição	Code Referência	C	ØD	H	ØD1	L	Mass (g) Massa
Cross angular anchor connector – 30 profile <i>Conetor âncora cabeça angular cruzada – perfil 30</i>	CAC30OC	30	12	21	14	38,8	55
Cross angular anchor connector – 40 profile <i>Conetor âncora cabeça angular cruzada – perfil 40</i>	CAC40OC	32	15	27	18	43	72
Cross angular anchor connector – 45 profile <i>Conetor âncora cabeça angular cruzada – perfil 45</i>	CAC45OC			29,5			78

Anchor connector
- In-line hinged version

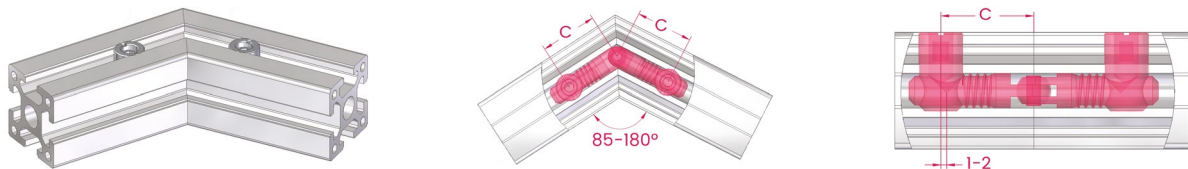


Description Descrição	Code Referência	C	ØD	H	L	Mass (g) Massa
In-line hinged anchor connector – 30 profile Conetor âncora oblíquo em linha – perfil 30	CAC30ML	30	12	21	38,8	63
In-line hinged anchor connector – 40 profile Conetor âncora oblíquo em linha – perfil 40	CAC40ML	32	15	27	43	97
In-line hinged anchor connector – 45 profile Conetor âncora oblíquo em linha – perfil 45	CAC45ML			29,5		100

- Cross hinged version



85° < α < 180°



Description Descrição	Code Referência	A	ØD	H	L	Mass (g) Massa
Cross hinged anchor connector – 30 profile Conetor âncora oblíquo cruzado – perfil 30	CAC30MC	30	12	21	38,8	63
Cross hinged anchor connector – 40 profile Conetor âncora oblíquo cruzado – perfil 40	CAC40MC	32	15	27	43	97
Cross hinged anchor connector – 45 profile Conetor âncora oblíquo cruzado – perfil 45	CAC45MC			29,5		100